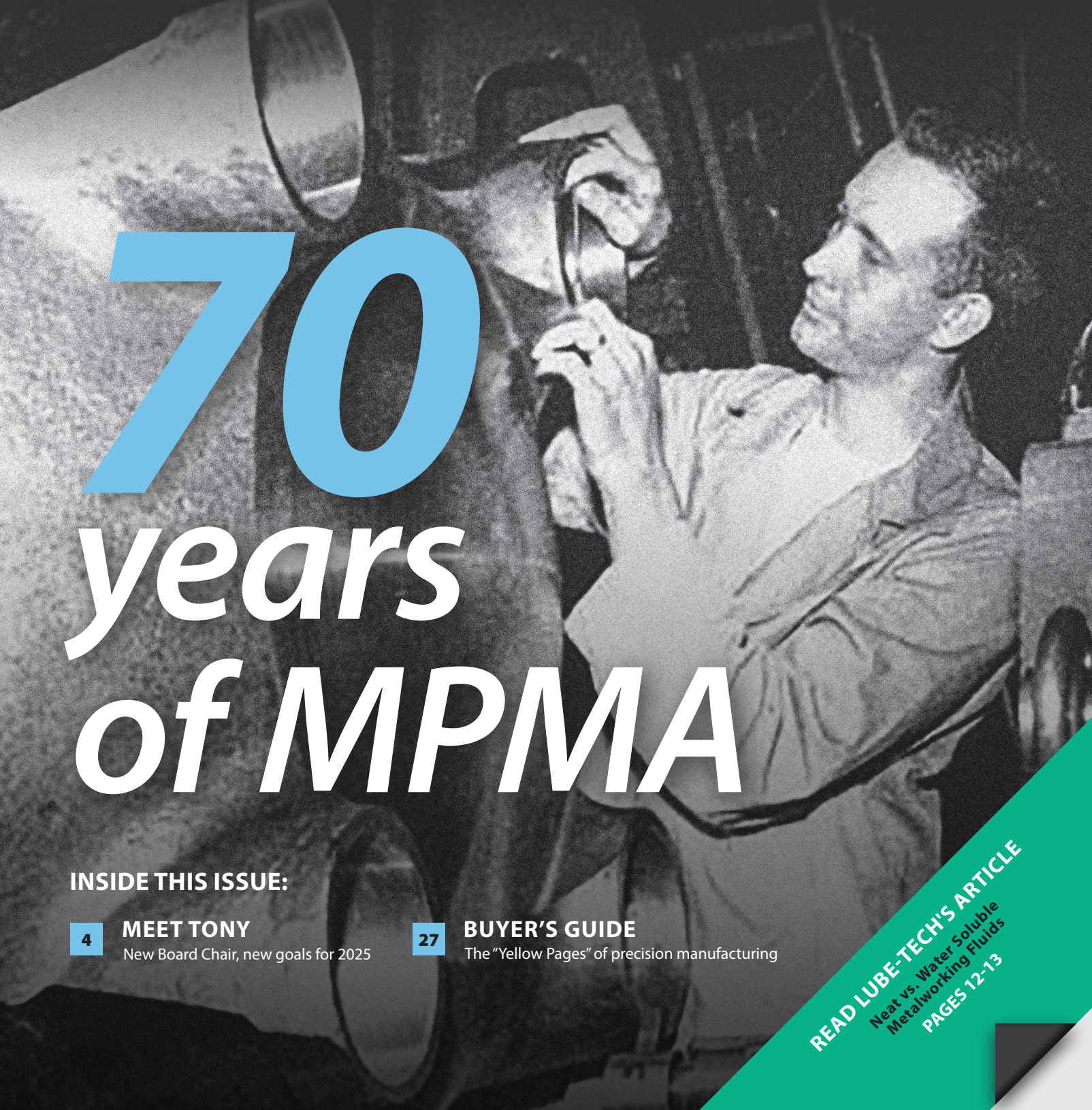


BUYER'S GUIDE 2025

PRECISION **MANUFACTURING**

JOURNAL OF THE MINNESOTA PRECISION MANUFACTURING ASSOCIATION



70
years
of MPMA

INSIDE THIS ISSUE:

4

MEET TONY

New Board Chair, new goals for 2025

27

BUYER'S GUIDE

The "Yellow Pages" of precision manufacturing

READ LUBE-TECH'S ARTICLE
Neat vs. Water Soluble
Metalworking Fluids
PAGES 12-13

INDEX

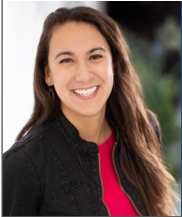
**Get your company in front
of MPMA Members**



**PURCHASE AN AD IN
THE JOURNAL FOR 2025**
Contact us now!

52% of MPMA Journal readers say
they use Precision Manufacturing to
assist in their purchasing decisions

71% of our readers are executive
level decision makers



Contact
Christine Soukup
Ad Sales Associate
christine@mpma.com

MAGAZINE STAFF

Publications Manager: Maddie Lemay

Editor: Jaimee Barnhart

Editorial Designer: Emma Gottschalk

MPMA OFFICERS

Board Chair: Tony Herbst, Micro-Matics Inc.

Vice Chair: Liz Wauters, Colburn Manufacturing

Treasurer/Secretary: Mel Enger, LB Carlson

President/CEO: Steve Kalina

COMMUNICATIONS COMMITTEE

Dave Meyer, John Galich, Tobias Flood, John Madsen

Precision Manufacturing (ISSN 0273-7523) is the only authorized, regular publication of the Minnesota Precision Manufacturing Association (MPMA). Opinions and conclusions expressed in the magazine are those of the individual writer and do not necessarily reflect the official position of the MPMA or its officers.

Precision Manufacturing is published by MPMA, 7700 68th Ave N, Suite 12, Brooklyn Park, MN 55428. Advertising rates provided on request. Correspondence regarding the magazine should be sent to Maddie Lemay, c/o MPMA, 7700 68th Ave N, Suite 12, Brooklyn Park, MN 55428. Electronic correspondence, including attached files in Word or plain text formats, may be sent to communications@mpma.com. Unsolicited materials will not be returned.

POSTMASTER: Send address changes to: *Precision Manufacturing*, c/o MPMA, 7700 68th Ave N, Suite 12, Brooklyn Park, MN 55428.

For more editorial or advertising information call 952-564-3041.

5



Shakopee-based Toro facility named Manufacturer of the Year

By Jaimee Barnhart

6



2025 Outlook: Cautious Optimism for Minnesota Manufacturers

by Jaimee Barnhart

FEATURES

- 8 New Administration and Your Shop
- 10 Future Faces
- 12 Lube-Tech Shop Profile

ASSOCIATION NEWS

- 4 Board Chair Letter
- 14 Member Directory
- 27 Buyer's Guide
- 38 New Member Welcome

New Board Chair, New Goals for 2025

Dear Members,



TONY HERBST

Board Chair

Minnesota Precision
Manufacturing Association
therbst@micro-matics.com


Thank you everyone for the nomination as the new MPMA board chair. I am honored and excited for the opportunity to carry forward and build upon what Steve, Laurent and the rest of the team have built. My core focus while in this role will predominantly center around showcasing the value of an MPMA membership, as well as helping to deepen our connections with our youth.

The MPMA has provided immeasurable value for me both personally and for the organizations I have worked for along the way. My first experience with the MPMA was during my time with Hegman Machine Tool (now Morris Midwest) when Ralph and Ryan Hegman brought me to Golden Gloves boxing. I could not believe how far back and wide ranging the relationships went between various companies, and people. True friendships and respect filled the “arena”... I was forever impressed and realized that working in this great industry commands integrity and determination. Today, I am the president at Micro-Matics Inc. in Fridley, and work alongside a phenomenal team. I realized then and now that the MPMA must be an association that can offer a “safe place” for networking, but also provide tangible ways for members to grow their businesses.

If you have chosen a career in manufacturing in Minnesota, you have been positively impacted by the MPMA in some fashion. We are all members of an association that works tirelessly to ensure manufacturing is prominently represented in all aspects of our industry. Whether it be huge wins in grant funding awards, to engaging with our youth and their families to build curiosity about manufacturing in Minnesota, the MPMA emulates the drive and persistence that manufacturing requires for success. I am excited to be part of our next chapter.

If you are reading this issue as a current member.... Thank you! You are likely in search of that “best practice” that could be the key to solving a current challenge you are facing. If you are reading this issue, but not a member, thank you for your curiosity. I encourage you to keep paging through as you will discover a consistent theme: genuine success stories, relevant information, and awareness on ways your peers are approaching similar challenges you face. Whether you are a manufacturer or a vendor, we are committed to providing the platform where each member can effectively improve their organization through expanding your network, or building upon your precision manufacturing knowledge.

We are an industry of many different organizations all striving to do it the right way. That is, we are all focused on providing a winning culture to help enrich the lives of our employees and coworkers, but not at the cost of others’ failures. I urge you to lean into the MPMA as there is a wealth of knowledge and connections that can truly impact your success. If for some reason we are falling short, please reach out...we are an association committed to being the best and value your feedback.

Outside of work... My wife, Julie and I call central Minnesota home and are blessed parents of five children. Each of them doing their part to “go after it” in their own careers/lives. As parents, we have witnessed the success a young adult can have when they are supported by a combination of parenting, schooling, and forward-thinking employers. We both appreciate all that manufacturing in Minnesota has provided for our family. 

Tony R. Herbst

Tony Herbst



Shakopee-based Toro facility named Manufacturer of the Year

By Jaimee Barnhart

Since Toro first opened the doors of its Shakopee facility in 1975, it has grown into a cornerstone of The Toro Company's global operations, according to Seth Sundgaard, Senior Manager of Operations.

Each year, the Minnesota Precision Manufacturing Association (MPMA) recognizes one manufacturer who has gone above and beyond to make a difference in their community. In 2024, Toro was the recipient of the Manufacturer of the Year Award.

"In addition to a household brand that produces cool and innovative products, Toro is very focused on developing their skilled workforce right here in Minnesota," MPMA President Steve Kalina said. "Toro sets the bar for how companies should engage and develop workers, no matter their background or skill level."

Sundgaard said 2024 was a year that brought several key achievements for Toro's Shakopee facility, including a partnership with the University of Minnesota where they showcased advanced manufacturing processes through facility tours, an opportunity to inspire the next generation of industry professionals.

"Toro has had several apprentices train through MPMA programs at local technical colleges, and each time, MPMA ends up learning new and creative ways to engage employees," Kalina said.

As part of their existing career pathways map, which provides growth opportunities for Toro employees, the facility also launched an advanced core skills program in 2024 to align more closely with the needs of their growing facility. Additionally, Sundgaard said, they've continued to leverage automation to streamline manufacturing processes and grow more efficient than ever.

"Being named Manufacturer of the Year really means a lot to everyone at Toro," said Eric Taylor, Training Coordinator at Toro. "It's a reflection of the dedication and expertise of our talented team, and I couldn't be prouder of what we've accomplished together." As the Shakopee facility enters its 50th year of operations in 2025, Toro will

continue to focus on evolving along with their workforce. Their apprenticeship program is still "going strong," Taylor said, with continued interest from Toro employees eager to keep growing their own skills and their future careers.

"We want to thank MPMA for everything they do to support manufacturing in Minnesota and the

communities here," Taylor said. "And a special thanks to Steve Kalina for his leadership and all he's done to support Toro and our employees. This award truly represents the strength of our team and the amazing partnerships we've built in this industry." 



2025 Outlook: Cautious Optimism for Minnesota Manufacturers

Surveys, studies, and experts weigh in on the manufacturing industry's economic outlook for the year.

By Jaimee Barnhart

The economic outlook for Minnesota manufacturers in 2025 is a mixed bag, reflecting cautious optimism tempered by significant challenges. While the key economic indicators still being reported suggest steady growth in 2024, underlying concerns such as workforce shortages, cost pressures, and potential disruptions are clouding the horizon for many, according to industry experts and economists.

Overall growth continues, but is slowing

Data available through the third quarter of 2024 shows that both the state and national economies continued to grow, buoyed by cooling inflation. Joe Mahon, Regional Outreach Director for the Federal Reserve Bank of Minneapolis, explained that inflation trends have offered a sense of relief after the peaks of recent years.

"The United States' Gross Domestic Product increased by 3.1% at an inflation-adjusted annual rate in the third quarter of 2024," Mahon noted. "Minnesota mirrored this growth, with its GDP increasing by 2% over the same period."

While growth continues, the labor market has begun to show signs of strain. Both Minnesota and the nation saw unemployment tick up slightly throughout 2024. In Minnesota, unemployment rose from 2.7% in January to an estimated 3.5% by November. Nationally, unemployment climbed from 3.7% to 4.2%.

The manufacturing sector reflects these mixed signals. While some manufacturers report steady business, others are experiencing a marked slowdown. This divergence in performance has left the industry grappling with uncertainty as it continues into 2025.

Index decline reflects broader concerns

Creighton University in Omaha, Nebraska, frequently publishes the Mid-America Manufacturing Index, which compiles data from a nine-state region, including Minnesota. This index has become a trusted barometer for the sector's health.

The most recent report shows a dip in Minnesota's Business Conditions Index for December 2024, which declined to 51.4 from 53.4 in November.

The components of the overall December index were as follows:

- New orders: 46.4
- Production or sales: 49.0
- Delivery lead time: 56.2
- Inventories: 53.4
- Employment: 51.8

Note: These numbers represent index values, not percentage points or specific units. They are part of the Business Conditions Index, which is typically measured on a scale where 50.0 is the growth-neutral threshold.

While the index remains above the growth-neutral threshold of 50, the decline suggests that growth has slowed as

the year closed. This aligns with broader concerns about demand, workforce availability, and rising costs that continue to weigh on manufacturers' outlooks.

"Manufacturers in the nation and region continue to shed jobs," said Ernie Goss, Forecasting Group Director, in a recent press release. "In terms of impending economic threats, such as an East/Gulf Coast longshoreman strike looming on January 15, approximately 45% of supply managers expect a recession in the first half of 2025."

Yet, not all data points are discouraging. According to the U.S. International Trade Administration, Minnesota expanded 2024 year-to-date manufacturing exports by \$2.2 billion compared to the same period in 2023, representing an impressive 11.5% gain. This highlights that while domestic challenges persist, global opportunities remain a bright spot for many manufacturers.

Enterprise Minnesota's annual State of Manufacturing (SOM) survey, a comprehensive look at industry trends and sentiments, paints another picture of the challenges and opportunities facing manufacturers.

At the end of 2023, manufacturers expressed apprehension about several recent legislative changes, including the implementation of mandated paid sick and leave time policies for employees of all company sizes and the legalization of cannabis products. These legislative shifts have created financial and operational concerns, particularly for smaller

manufacturers with fewer resources to navigate regulatory changes.

While the financial burdens of implementing paid leave policies are still a concern for large and small manufacturers alike, this year's survey revealed that inflation, increasing material costs and the challenges of attracting a qualified workforce are also top concerns for 2025. Additionally, respondents expressed growing fears about the economy as a whole — five years ago, only 15% of respondents believed that the Minnesota business climate was worse than before — in 2024, 56% believed it to be true, while only 12% believed it to be better than before.

To learn more, visit the full survey report at enterpriseminnesota.org.

Glass half full? Maybe.

Despite the challenges, some manufacturers maintain a cautiously optimistic outlook. Mahon noted that while many industry leaders report declining demand and lower sales volumes, the underlying reasons vary widely.

“In general, demand appears to be down, as contacts have been telling us that sales or orders have been decreasing for months now,” Mahon said. “In some cases, this is a matter of activity returning to normal after a few very strong years, while other contacts have told me that business is the slowest they have seen in a very long time.”

The impact of these slowdowns often depends on the specific markets manufacturers serve. Those selling to interest-sensitive sectors, such as construction equipment or industrial machinery, are feeling the effects of higher interest rates more acutely.

Still, there are bright spots. According to the SOM, manufacturers investing in automation, process improvements, and diversification of customer bases are positioning themselves for growth in 2025 and beyond.

“I have heard from numerous contacts that they are anxious about the impacts of a potential intensification of trade conflicts affecting both access to

international markets for products and the ability to source inputs,” Mahon added.

Looking Ahead

Looking at 2025, Minnesota manufacturers are keeping a wary eye on both opportunities and challenges. While the broader economy shows signs of resilience, the sector remains in a delicate balancing act between adapting to external pressures and capitalizing on growth opportunities.

For now, manufacturers across the state are focused on mitigating risks, exploring new markets, and preparing for a year that is likely to test their resilience and ingenuity. [PM](#)



How could the new administration impact my company?

By Dave Kornecki

This article was written in February 2025. Additional legislative changes may have taken place between the writing of this article and the publishing of this magazine.

National Politics:

The nation let out a collective sigh of relief on November 6, 2024, knowing that the Presidential election was over, and the biggest sigh comes nearly everyone having to not see another political campaign ad. Former President Trump has returned to the White House, having won the electoral college and, this time the popular vote. He was sworn into office on Monday, January 20, 2025. Here are a few items to look for:

Tariffs

Tariffs started under the first Trump Administration, continued throughout the Biden Administration, and are certainly in play for the next administration. Currently, various Chinese goods are impacted by a tariff which can range from 7.5% to 25% across many product categories.

At the time of this writing, additional countries have been targeted with potential tariffs, Colombia, Mexico, Canada, BRIC Nations, and the stated rates have varied. The U.S. Treasury will oversee these tariffs, and Trump has nominated Scott Bessent as the Secretary of this department, who has since been confirmed by the U.S. Senate.

Taxes

The 2017 Tax Cuts & Jobs Act has certain provisions which are set to expire on December 31, 2025. While the corporate tax rate at 21% is currently permanent, various small and medium size business deductions and individual

tax provisions are set to expire at the end of the year. Appropriation Committee Chairs in the House are currently being tasked to identify where to make cuts. Taxes will certainly take up a lot of the oxygen in Washington in 2025.

Immigration

A central theme to Trump's campaign was removing illegal immigrants and closing the border. Sen. Marco Rubio, was confirmed as the Secretary of State, is currently touring South America, firming up agreements with various countries at the time of this writing. These agreements are centered around how to handle naturally born citizens and immigrants from other countries. How many immigrants will be deported and through what means do they achieve their stated goals, is certainly taking shape in the first 100 days of the new administration. Stephen Miller will be the White House Deputy Chief of Staff for Policy, overseeing these policies, and Tom Homan, is the Border Czar.

Minnesota Politics:

The current Governor of Minnesota will continue in that role for the next 2 years having returned after running unsuccessfully as the VP on the Harris ticket and Minnesotans will be sending Sen. Amy Klobuchar back for her 4th term as a US Senator.

The Minnesota Senate, which has 67 seats, had one seat up for election in

2024 when MN Senator Kelly Morrison announced she would be running for Rep. Dean Phillips vacated seat for the US House. This opened up a competitive district for control of the MN Senate Chamber, as the Democrats had only a 1 seat majority, 34 to 33. Sen. Ann Johnson Stewart, the DFL candidate and previous office holder, did go on to win the special election and Sen. Morrison went on to win Phillip's seat and represented the only change in the US House representation from Minnesota. After the election, Sen. Kari Dziedzic passed away, opening up her seat, which has since been filled by Doron Clark. Much of the leadership in the Senate remains unchanged.

The MN House, for the first time since 1979, is looking to be tied. The DFL lost 3 seats and control of the chamber. Legal challenges still remain at the time of this writing, but for now, the two leaders Rep. Melissa Hortman & Rep. Lisa Demuth have carved out a power sharing agreement and a path forward. Rep. Lisa Demuth becomes the first black Speaker of the House, and first female speaker for the Republican Party. Committee assignments have been announced and these committees will be evenly split and Co-Chairs have been announced. These chairs will rotate the gavel between each committee hearing. 

Future Faces: Kevin Nguyen

Meet Kevin, current Dunwoody College student looking forward to a career in Automated Systems and Robotics.

By Kevin Nguyen

Edited for print by Jaimee Barnhart



Dunwoody College student Kevin Nguyen has always had a knack for science, math, and engineering — in fact, he graduated from Blaine High School's Center for Engineering, Mathematics, and Science (CEMS) in 2023. Now, he's gearing up for a career in Automated Systems and Robotics (ASRO). Read on to find out how he got his start in manufacturing, and where he hopes his career will take him:

First, share a bit about yourself. What first piqued your interest in manufacturing? Have you found your "niche" yet?

The CEMS program I was a part of in high school was the first of many opportunities I was fortunate enough to be given that developed my interest in technical careers. CEMS offered additional class options to experience technical courses while I was still in high school. The second opportunity was given to me at my high school's career fair,

where I met Augustine Kietzer, program director of Pathways to Careers (P2C) scholarship program at Dunwoody. This program provides high school students a three-week, hands-on experience of all the different programs Dunwoody has to offer.

I saw several technical fields which had one or two aspects of what I was seeking in a career, but it wasn't until I saw the ASRO program that I knew I found what I wanted to pursue. This program has everything I sought, including designing an automated system, solving technical problems and working on hands-on projects.

Since deciding to pursue this path, Dunwoody has provided further resources to help me achieve my goal of finding a career. The Dean of Robotics and Manufacturing E.J. Daigle gave me the opportunity to join the Autonomous Snowplow Team. I'm proud to say that my team was able to achieve first place in the 2024 competition, which leads me to believe I have successfully found my niche. Without having been given these experiences and stepping outside my comfort zone, I don't think I would have grown to love manufacturing as much as I did.

Who have been a few of your biggest influences and supporters in your career journey?

My family, particularly my dad, allowed me to pursue my interests, which developed into the skills I now use to be successful at Dunwoody. More importantly, he supported me financially so that I could attend Dunwoody in the first place.

Here at Dunwoody, I've met fantastic people who have helped me along my


career journey. Augustine truly cares for everyone who is a part of P2C, and has spent so many hours ensuring we all have the chance to succeed. She has provided me with useful life lessons through the monthly P2C meetings, in addition to the financial assistance of the scholarship. Thank you Augustine Kietzer.

Jonathan Moore has provided a great service as Assistant Director of Student Affairs. His caring personality shows in his work, running events to connect students together. Thank you Mr. Moore for brightening my day every time I see you.

I also want to thank my instructors: Brad Cleland, Edo Krivdic, Jeremy Berg, Joseph White and my program's dean, E.J. Daigle. They all have provided me with so much technical knowledge and so many skills that I'll use to prosper in the manufacturing industry. It's been amazing learning from such unique and experienced individuals, and I can't thank them all enough.

What advice would you give to someone who's just starting out in manufacturing?

My advice to anyone who may be interested in pursuing a career within manufacturing: take any opportunity given to you without hesitation and take the initiative to find your own. Experience is key when developing the knowledge and skills that are utilized within manufacturing.

As my story has told, I wouldn't be where I am now if I didn't seize the opportunities that came to me. The CEMS program introduced the basic skills and concepts that I still use today, P2C has shown me what kind of manufacturing career I am suited for, and the Autonomous Snowplow team has given me a place to develop my skills beyond the coursework in ASRO. 



Navigating Metalworking Fluids: Neat vs. Water Soluble

Article submitted by Lube-Tech

Choosing the right metalworking fluid is critical for efficient and high-quality machining operations. Two primary options dominate the market: neat cutting oils and water-soluble fluids. Both offer advantages, and selecting the best one depends on your specific needs. Let the experts at Lube-Tech help you navigate between them, whether you're getting into the field or thinking about a change.

Neat Cutting Oils: Tried-and-True Fluids with Muscle

Neat cutting oils are lubricants formulated with mineral oils and performance-enhancing, extreme pressure additives. They are used

directly, without dilution and offer several benefits:

Superior Lubrication: Neat oils excel in heavy-duty machining applications. Their high viscosity provides a robust film between the tool and workpiece, minimizing friction and wear. This is particularly important when working with tough materials.

Improved Finish: Neat oils often lead to superior surface finishes on machined parts. The thick lubricant film reduces chatter and vibration on the workpiece, resulting in smoother results.

Extended Tool Life: By minimizing friction and wear, neat oils significantly extend the life of cutting tools, reducing replacement costs and downtime.

Low Maintenance: In comparison to water-soluble coolants, neat oils are used straight and not diluted with water. Therefore, they are not susceptible to evaporation and bacterial growth and require less overall maintenance.

They can also come with a few drawbacks for your business, however:

Mist Generation: Neat oils can generate mist during machining, posing health risks to operators and requiring special disposal procedures.

Cost: Neat oils tend to be more expensive than water-soluble fluids.

Heat Transfer: While good at lubrication, neat oils are less efficient at heat transfer compared to water-based solutions.

Cleanability: Neat cutting oils can leave residues on machined parts which can interfere with post-machining and cleaning processes.

Water-Soluble Fluids: Cutting Edge Technologies with Versatility

Water-soluble coolants are emulsions of oil, water and extreme pressure additives that effectively cool and lubricate machined parts. They offer a different set of advantages in comparison to neat cutting oils:

Broad Applicability: Water soluble coolants offer effective lubrication and cooling for most precision machining applications.

Excellent Cooling: Water is a fantastic coolant, and water-soluble fluids excel at heat transfer, keeping tools and workpieces cooler during machining.

Cost Effectiveness: Water-soluble coolants are generally less expensive than neat oils since they are diluted with water prior to use.

However, water-soluble coolants also have limitations:

Lubrication Performance: Compared to neat oils, water-soluble fluids offer less robust lubrication. This can be a disadvantage in heavy-duty machining applications.

Finish Quality: While acceptable for many applications, water-soluble coolants might

not achieve the same level of surface finish as neat oils in specific situations.

Maintenance Requirements: Water-soluble coolants require regular monitoring and maintenance to ensure they remain effective and prevent bacterial growth. Water quality plays a critical role in surface finish quality.


A Quick Summary:

Here's a snapshot to save to help you pick the right fluid for your needs:

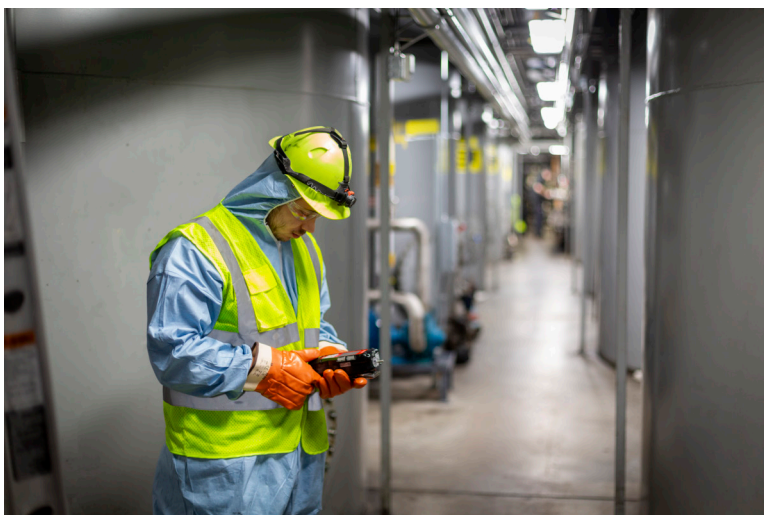
Need lubrication and high-quality surface finishes? Neat cutting oils are your best bet for heavy-duty machining and part finishes.

Versatility, cooling and cost a priority? Water-soluble coolants provide cost-effective machining performance for most general machining applications.

If you need metalworking fluids, Lube-Tech can help. We have a full line of metalworking fluids available for you to ensure maximum uptime. As your full-service partner, we'll put our R&D facilities to work to meet your unique precision manufacturing demands.

If you need assistance with proper disposal of your used metalworking fluids, Lube-Tech can help there as well. We can handle all your recycling needs ensuring you're both environmentally conscious and staying on top of local regulations. Having the proper partner here is critical, so contact Lube-Tech today for your fluid recycling needs. 

Need lubrication and high-quality surface finishes? Neat cutting oils are your best bet for heavy-duty machining and part finishes. Versatility, cooling and cost a priority? Water-soluble coolants provide cost-effective machining performance for most general machining applications.



MEMBER DIRECTORY

a COUPLE of GURUS

Keith Schoolcraft
901 N 3rd St Ste 310
Minneapolis, MN 55401
acoupleofgurus.com
admin@acoupleofgurus.com
PHONE (612) 454-4878
FOUNDED 2002 **MPMA** 10/30/13
EMPL 15 **SQ FT** 1,945
IND SERVED Government,
Healthcare, Manufacturing, Non Profit
PRODUCTS / SERVICES
• Computer Software & Training
• Information Technology

A-1 Engineering

Blake Richner
9506 Foley Blvd NW
Coon Rapids, MN 55433
a1eng.com
blake@a1eng.com
PHONE (763) 786-8710
FOUNDED 1971 **MPMA** 07/09/96
EMPL 11 **SQ FT** 16,500
IND SERVED Aerospace,
Automation, Food, Industrial,
Medical, Plastics

PRODUCTS / SERVICES
• Milling
• Precision Grinding
• Turning - Swiss

ABA Water Systems, Inc.

Tim Weaver
226 W Broadway
Plainview, MN 55964
abawatersystems.com
tim@abawatersystems.com
PHONE (800) 257-1271
FOUNDED 1985 **MPMA** 04/02/96
EMPL 10
IND SERVED Industrial,
Manufacturing, Medical
PRODUCTS / SERVICES
• Electrical Discharge Machining
• Water Jet Cutting

Abrasive Specialists, Inc.

Jaime Olsen
1202 98th Avenue NE
Blaine, MN 55434
asimn.com
jaime.olsen@asimn.com
PHONE (763) 571-4111
FOUNDED 1976 **MPMA** 01/01/78
EMPL 26 **SQ FT** 15,000
IND SERVED Machining
PRODUCTS / SERVICES
• Abrasives
• Coolants/Lubricants
• Cutting Tools Distributor
• Gauging
• Tool Repair/Service
• Workholding

Accu-Prompt, Inc.

Scott Hoffmann
100 83rd Ave NE Ste 101
Fridley, MN 55432
accuprompt.com
shoffmann@accuprompt.com
PHONE (763) 783-1020
FOUNDED 1991 **MPMA** 02/04/92
EMPL 16 **SQ FT** 12,800
IND SERVED Aerospace,
Electronics, Gear Manufacturing,
Machine Job Shop, Medical
PRODUCTS / SERVICES
• Electrical Discharge Machining
• Micro Machining
• Milling

AdvancedTek

Heather Adams
255 E Roselawn Ave, Suite 45
St. Paul, MN 55117
advancedtek.com
hadams@advancedtek.com
PHONE (651) 489-6990
FOUNDED 1993 **MPMA** 11/10/17
EMPL 19
IND SERVED All
PRODUCTS / SERVICES
• Additive Manufacturing/Industrial
3D Printing
• Prototypes/Short Run
• Supply Sales

Aerotek

Dylan Ballantine
3920 Northwoods Dr.
Arden Hills, MN 55112
tweller@aerotek.com
PHONE (763) 923-2749
FOUNDED 1983 **MPMA** 04/12/16
EMPL 300
IND SERVED All
PRODUCTS / SERVICES
• Staffing

Agrimson Tool Company, Inc.

Gary Agrimson
4092 83rd Ave N
Brooklyn Park, MN 55443
agrimsontool.com
mailroom@agrimsontool.com
PHONE (763) 566-3446
FOUNDED 1975 **MPMA** 04/30/87
EMPL 4 **SQ FT** 3,400
PRODUCTS / SERVICES
• Electrical Discharge Machining
• Precision Grinding
• Sheet & Plate Rolling

Air Engineering & Supply, Inc.

David Maurer
PO Box 32397, 7521 Commerce
Lane NE
Fridley, MN 55432
airengr.com
david@airengr.com
PHONE (612) 332-4181
FOUNDED 1957 **MPMA** 10/01/82
EMPL 15 **SQ FT** 14,200
IND SERVED All
PRODUCTS / SERVICES
• Assembly
• Automation Integration
• Engineering & Design Services
• Hydraulic/Pneumatics
• Industrial Supplier
• Robotics/Automation
• Safety Equipment

AirCorps Aviation

Eric Sorenson
1259 Exchange Avenue Southeast
Bemidji, MN 56601
aircorpsaviation.com
erics@aircorpsaviation.com
PHONE (218) 444-4478
FOUNDED 2011 **MPMA** 2024
EMPL 75
IND SERVED Aerospace,
Aviation
CERTIFICATIONS ISO 9001; ITAR
Registered
PRODUCTS / SERVICES
• Metrology
• Milling
• Sheet Metal Fabrication

Alerus Financial

Shane Ewanika
Crescent Ridge, 10900 Wayzata Blvd
Suite 130
Minnetonka, MN 55305
alerus.com
shane.ewanika@alerus.com
PHONE (612) 305-4235
FOUNDED 1870 **MPMA** 09/16/13
EMPL 812
IND SERVED All
PRODUCTS / SERVICES
• Banking/Financing
• Employee Benefits
• Retirement Services/Succession
Planning

Alexandria Industries

Deb Moorman
401 County Road 22 NW
Alexandria, MN 56308
alexandriaindustries.com
dmoorman@alexandriaindustries.com
PHONE (800) 568-6601
FOUNDED 1966 **MPMA** 06/27/13
EMPL 575
IND SERVED Lighting, Marine,
Medical, Solar
PRODUCTS / SERVICES
• Aluminum Extrusion - Plate & Sheet
• Plastic Injection Molding
• Production Machining

Alexandria Technical & Community College

Michael Seymour
1601 Jefferson St
Alexandria, MN 56308
alextech.edu
michael.seymour@alextech.edu
PHONE (320) 762-0221
FOUNDED 1961 **MPMA** 01/05/08
EMPL 220
PRODUCTS / SERVICES
• Economic Development
• Robotics/Automation
• Technical Colleges/Education

All Elements, Inc.

Paul Levisse
301 Chelsea Rd
Monticello, MN 55301
allelementsinc.net
paul@allelementsinc.net
PHONE (763) 314-0234
FOUNDED 2002 **MPMA** 04/18/16
EMPL 18 **SQ FT** 20,000
IND SERVED All
PRODUCTS / SERVICES
• Construction

Alliance Metrology, Inc.

Jeff Kreckow
10550 County Road 81 Ste 115
Maple Grove, MN 55369
alliancemetrology.com
info@alliancemetrology.com
PHONE (763) 493-0026
FOUNDED 2002 **MPMA** 01/13/09
EMPL 4 **SQ FT** 1,800
IND SERVED Aerospace,
Automation, Medical
CERTIFICATIONS ISO 2015;
ISO 9001
PRODUCTS / SERVICES
• Calibration - Test & Inspection
• Computer Software & Training
• Metrology

Alliance Recycling Group

Shane Alsdurf
115 31st Ave. No
Minneapolis, MN 55411
argrecycles.com

shanea@alliancesteelco.com
PHONE (612) 588-2721
FOUNDED 1958 **MPMA** 2023
EMPL 100 **SQ FT** 1,800
IND SERVED Fabricating,
Machining, Manufacturing, OEM's,
Precision Manufacturing, Stamping
PRODUCTS / SERVICES
• Recycling

Alro Steel Corporation

Mark Ruger
3100 East High Street
Jackson, MI 49203
alro.com
mruger@alro.com
PHONE (612) 270-5561
FOUNDED 1948 **MPMA** 04/17/17
EMPL 2200 **SQ FT** 1,000,000
IND SERVED Manufacturing,
Plastics, Machining
PRODUCTS / SERVICES
• Industrial Supplier
• Metal Service Center

American Global Standards

Stephen Keneally
1187 Coast Village Road #495
Montecito, CA 93108
americanglobal.org
info@americanglobal.org
PHONE (617) 838-4648
FOUNDED 1993 **MPMA** 2024
EMPL 50 **SQ FT** 1,000,000
IND SERVED Contract
Manufacturing, Electronics,
Fabricating, Machine Job Shop,
Machining, Manufacturing
PRODUCTS / SERVICES
• ISO Certification Services

American Machine & Gundrilling Co., Inc.

Charles Berg, Jr.
10987 93rd Ave North
Maple Grove, MN 55369
amgundrilling.com
chucksr@amgundrilling.com
PHONE (763) 425-3830
FOUNDED 1976 **MPMA** 11/01/77
EMPL 10 **SQ FT** 12,800
IND SERVED All
PRODUCTS / SERVICES
• Deep Hole Drilling

AmeriStar Manufacturing Inc.

Dan Sacco
2600 9th Ave,
Mankato, MN 56001
ameristarmfg.com
dans@ameristarmfg.com
PHONE (507) 625-1515
FOUNDED 1908 **MPMA** 04/29/09
EMPL 40
IND SERVED Aerospace,
Agricultural, Defense, Electronics,
Industrial, Medical
PRODUCTS / SERVICES
• Fabricating
• Production Machining
• Stamping

Anderson Dahlen, Inc., A Gray Company

Cari Sather
6850 Sunwood Dr N.W.
Ramsey, MN 55303
andersondahlen.com
csather@andersondahlen.com
PHONE (763) 852-4700
FOUNDED 1948 **MPMA** 08/05/08
EMPL 300 **SQ FT** 240,000

IND SERVED Chemical, Food,
Nuclear, Pharmaceutical
PRODUCTS / SERVICES
• Machining - Large Capacity
• Sheet Metal Fabrication
• Welding

Andrew Tool & Machining Company

Bruce Hanson
15300 28th Ave North, Suite A
Plymouth, MN 55447
andrewtool.com/
brucehanson@andrewtool.com
PHONE (763) 559-0402
FOUNDED 1983 **MPMA** 11/01/73
EMPL 30 **SQ FT** 16400
IND SERVED Aerospace,
Defense, Medical
PRODUCTS / SERVICES
• Electrical Discharge Machining
• Precision Grinding
• Production Machining

Anoka Hennepin ISD 11

Michael Hilber
1355 U.S. 10
Anoka, MN 55303
anoka.k12.mn.us
michael.hilber@anoka.k12.mn.us
PHONE (763) 433-4071
FOUNDED 2002 **MPMA** 2016
IND SERVED Education
PRODUCTS / SERVICES
• Technical Colleges/Education

Anoka Technical College/Anoka-Ramsey Community College

Heidi Braun
1353 U.S. 10
Anoka, MN 55303
anokatech.edu
heidi.braun@anokaramsey.edu
PHONE (763) 576-4700
FOUNDED 1967 **MPMA** 09/06/05
IND SERVED Education
PRODUCTS / SERVICES
• Computer Software & Training
• Programming
• Technical Colleges/Education

Apollo Technology Group, LLC

Jitesh Mehta
7600 Quattro Drive
Chanhassen, MN 55317
apollo technologygroup.com
jitesh.mehta@apollo technologygroup.com
PHONE (952) 227-6600
FOUNDED 2001 **MPMA** 01/17/20
EMPL 70 **SQ FT** 77,000
IND SERVED Contract,
Manufacturing, Fabricating,
Machining, Manufacturing, Plastics,
Precision Manufacturing, Semi
Conductor
CERTIFICATIONS ISO 9001; ISO 2015
PRODUCTS / SERVICES
• Fabricating
• Industrial Supplier
• Turning

Applied Engineering, Inc.

John Oleson
7077 Northland Circle North,
Suite 110
Brooklyn Park, MN 55428
go-applied.com
joleson@go-applied.com
PHONE (763) 420-6600
FOUNDED 1986 **MPMA** 08/13/21

EMPL 24

IND SERVED Automation,
Engineering, Heavy Equipment,
Industrial Equipment, Manufacturing,
Precision Manufacturing

PRODUCTS / SERVICES

- Engineering & Design Services
- Programming
- Prototypes/Short Run

Aprios Custom Manufacturing

Alex Danzberger

8617 Xylon Court North
Minneapolis, MN 55445

aprios.com
adanberger@aprios.com

PHONE (763) 424-2525

FOUNDED 1977 **MPMA** 2020
EMPL 70

IND SERVED Medical

PRODUCTS / SERVICES

- Assembly
- Fabricating
- Plastic Injection Molding

APT Machining Inc.

Brian Mayo

320 East Industrial Street
Kasota, MN 56050

aptncc.com

brianmayo@aptncc.com

PHONE (507) 931-5425

FOUNDED 2006 **MPMA** 2010
EMPL 21

IND SERVED Agricultural,
Automotive, Construction, Defense

PRODUCTS / SERVICES

- Milling
- Turning

ARC (Advanced Research Corp.)

Judy Dugas

4459 White Bear Pkwy
White Bear Lake, MN 55110

arcnano.com

jdugas@arcnano.com

PHONE (651) 789-9000

FOUNDED 1985 **MPMA** 2015
EMPL 25

IND SERVED Aerospace,
Assembly, Contract Manufacturing,
Defense, Electronics, Engineering,
Machine Job Shop, Machining,
Metrology, Precision Manufacturing,
Semi Conductor

CERTIFICATIONS ISO 9001; ISO
2015; ITAR Registered

PRODUCTS / SERVICES

- Electrical Discharge Machining
- Micro Machining
- Milling
- Production Machining

Arrow Finishing, Inc.

Danforth Messerly

1671 93rd Ln NE

Blaine, MN 55449

arrowfinishing.com

danforth.messerly@arrowfinishing.com

PHONE (763) 780-3367

FOUNDED 1984 **MPMA** 04/09/02
EMPL 115 **SQ FT** 78,000

IND SERVED Aerospace,
Automotive, Defense, Hydraulics,
Industrial, Medical Devices

PRODUCTS / SERVICES

- DeBurring
- Laser Marking
- Metal Finishing

Atscott Manufacturing Company, Inc.

Jacob Kiel

1150 Holstein Dr NE

Pine City, MN 55082

atscott.com

jkziel@atscott.com

PHONE (612) 462-9719

FOUNDED 1963 **MPMA** 06/19/12
EMPL 75 **SQ FT** 66,000

IND SERVED Aerospace,
Automotive, Defense, Industrial,
Medical, Military, OEM's, Prototype

PRODUCTS / SERVICES

- Assembly
- Production Machining
- Sheet Metal Fabrication
- Water Jet Cutting

Aurora Micro Machine

Eric Nelson

230 Capitol Dr Ste 200

Buffalo, MN 55313

auroramicromachine.com

eric.nelson@auroramicromachine.com

PHONE (763) 682-6474

FOUNDED 1999 **MPMA** 10/30/13
EMPL 7 **SQ FT** 4,000

IND SERVED Aerospace,
Computer, Medical

PRODUCTS / SERVICES

- Electrical Discharge Machining
- Micro Machining

B & E Tool Company, Inc.

Gary Noel

7795 Beech Street NE

Fridley, MN 55432

betoolmfg.com

gary.noel@betoolmfg.com

PHONE (763) 571-1802

MPMA 2024

IND SERVED All

PRODUCTS / SERVICES

- Machining - Large Capacity
- Production Machining
- Additive Manufacturing/Industrial
3D Printing

Barry & Sewall Industrial Supply

Steve Olson

2001 Broadway St NE

Minneapolis, MN 55413

barrysewall.com

steveo@barrysewall.com

PHONE (612) 331-6170

FOUNDED 1957 **MPMA** 11/01/60
EMPL 30 **SQ FT** 35,000

IND SERVED All

PRODUCTS / SERVICES

- Abrasives

Bauer Design Build LLC

Mike Bauer

14030 21st Ave North

Plymouth, MN 55446

bauerdesignbuild.com

mike.b@bauerdb.com

PHONE (763) 972-0000

FOUNDED 2005 **MPMA** 02/18/21
EMPL 56

IND SERVED Construction,
Healthcare, Industrial, Manufacturing,
Medical Devices, Precision
Manufacturing

PRODUCTS / SERVICES

- Construction
- Engineering & Design Services
- Real Estate

Beaver Machine & Tool Inc.

Jay Groth

5273 Hanson Court

Crystal, MN 55429

beavermachine.com

beavshack@beavermachine.com

PHONE (763) 535-2204

FOUNDED 1967 **MPMA** 05/01/01
EMPL 12 **SQ FT** 15,000

IND SERVED Hydraulics,
Motion Control, Photography

PRODUCTS / SERVICES

- Turning - Swiss

Bell Bank

Julie Lovaas

5500 Wayzata Boulevard

Minneapolis, MN 55416

bellbanks.com

jlovaas@bell.bank

PHONE (952) 905-5022

FOUNDED 1966 **MPMA** 07/29/15
EMPL 1000

IND SERVED All

PRODUCTS / SERVICES

- Banking/Financing
- Capital Equipment Financing
- Retirement Services/Succession
Planning

Bermo Inc.

Linda Heltemes

4501 Ball Rd NE

Circle Pines, MN 55014

bermo.com

linda.heltemes@bermo.com

PHONE (763) 786-7676

FOUNDED 1947 **MPMA** 03/06/12
EMPL 125 **SQ FT** 285,000

IND SERVED Agricultural,
Automation, Electronics, Medical

CERTIFICATIONS ISO 2015; ISO
9001

PRODUCTS / SERVICES

- Sheet Metal Fabrication
- Stamping
- Welding - Robotic

Bizal Manufacturing Co.

Steve Bizal

7880 Ranchers Rd NE

Fridley, MN 55432

bizalmfg.com

bizalmfg@bizalmfg.com

PHONE (763) 571-4030

FOUNDED 1965 **MPMA** 11/01/67
EMPL 40 **SQ FT** 33,000

IND SERVED Aerospace,
Electronics, Medical

PRODUCTS / SERVICES

- Milling
- Turning
- Water Jet Cutting

BizzyWeb

Dave Meyer

11190 Commerce Dr. N

Champlin, MN 55316

bizzyweb.com

dave.meyer@bizzyweb.com

PHONE (612) 424-9990
FOUNDED 1999 **MPMA** 12/21/20
EMPL 11 **SQ FT** 2850

IND SERVED All, Contract
Manufacturing, Machining,
Manufacturing, Plastic Injection,
Precision Manufacturing, Professional
Services

PRODUCTS / SERVICES

- Computer Software & Training
- Programming
- Marketing Services

Boyum Barescheer

Randy Feld

3050 Metro Drive, Suite 200

Minneapolis, MN 55425

myboyum.com

pfleming@myboyum.com

PHONE (952) 854-4244

FOUNDED 1975 **MPMA** 04/23/19
EMPL 70

IND SERVED Contract
Manufacturing, Distribution,
Engineering, Manufacturing,
Precision Manufacturing, Technology

PRODUCTS / SERVICES

- Accounting
- Mergers & Acquisitions
- R & D Tax Credit Consultants

Branch Manufacturing Company, Inc.

Troy Fairbanks

PO Box 68, 6420 Pine Street

North Branch, MN 55056

branchmfg.com

troyf@branchmfg.com

PHONE (651) 674-4441

FOUNDED 1952 **MPMA** 10/01/55
EMPL 50 **SQ FT** 66500

IND SERVED Agricultural,
Appliance, Automotive, Construction,
Military, Recreational Vehicles

PRODUCTS / SERVICES

- Laser Cutting
- Stamping
- Tool and Die

Brenk Brothers, Inc.

Jeff Brenk

7490 Central Ave NE

Fridley, MN 55432

brenkbros.com

jeff.brenk@brenkbros.com

PHONE (763) 784-5621

FOUNDED 1989 **MPMA** 02/02/21
EMPL 120 **SQ FT** 100,000

IND SERVED Aerospace,
Data Storage, Defense, Machining,
Medical Devices, Optical, Precision
Manufacturing, Printing

PRODUCTS / SERVICES

- Electrical Discharge Machining
- Milling
- Turning

Bridgewater C&I

Elizabeth Fechter

4450 Excelsior Blvd, Suite 100

St. Louis Park, MN 55416

bwbmn.com

elizabeth.fechter@bwbmn.com

PHONE (952) 737-4729

FOUNDED 2005 **MPMA** 12/13/17
EMPL 5

IND SERVED All

PRODUCTS / SERVICES

- Banking/Financing
- Capital Equipment Financing

Brown & Brown of MN

James Clairmont

80 S. 8th Street

Minneapolis, MN 55402

bbminneapolis.com

bbrown.com

PHONE (612) 333-3323

FOUNDED 1938 **MPMA** 03/01/19
EMPL 20 **SQ FT** 4,700

IND SERVED All

PRODUCTS / SERVICES

- Employee Benefits
- Insurance

BTD Tooling Division

Jeff King

21315 Heywood Ave

Lakeville, MN 55044

btdmfg.com

jeff.king@btdmfg.com

PHONE (218) 846-2923

FOUNDED 1980 **MPMA** 03/04/91
EMPL 123 **SQ FT** 50,000

IND SERVED All

PRODUCTS / SERVICES

- Machining - Large Capacity
- Prototypes/Short Run
- Tool and Die

C & C Machine Tool Inc.

Mandy Drawert

1601 99th Lane NE

Blaine, MN 55449

ccmachinetoolinc.com

ccmachinetoolinc@gmail.com

PHONE (612) 308-2152

FOUNDED 2016 **MPMA** 03/02/17
EMPL 2 **SQ FT** 3,200

IND SERVED Machining,
Manufacturing

PRODUCTS / SERVICES

- Cutting Tools Manufacturer
- Machine & Electrical Repair
- Machine Tool Sales Fabrication

C-Axis Inc.

Toni Bailey

800 Tower Dr

Hamel, MN 55340

c-axis.com

tonib@c-axis.com

PHONE (763) 478-8982

MEMBER DIRECTORY

Caztek Engineering

Casimir Sienkiewicz
628 North Pine Street
St. Paul, MN 55130
caztekm.com
caz@caztekm.com
PHONE (651) 291-8007
FOUNDED 2000 MPMA 10/21/22
EMPL 12

IND SERVED Aerospace,
Aviation, Energy, Engineering,
Medical, Prototype

PRODUCTS / SERVICES

• Engineering & Design Services
• Prototypes/Short Run

CBIZ MHM, LLC

Linde Sexson
222 S. 9th St., Ste 1000
Minneapolis, MN 55402
cbiz.com
linde.sexson@cbiz.com
PHONE (612) 376-1263
FOUNDED 1954 MPMA 11/06/12
EMPL 100

IND SERVED Construction,
Distribution, Manufacturing, Non
Profit, Professional Services, Real
Estate

PRODUCTS / SERVICES

• Accounting
• Mergers & Acquisitions
• R & D Tax Credit Consultants

Centennial Carbide

Hailey Norville
1912 Broadway St. NE
Minneapolis, MN 55413
centennialcarbide.com
hailey@centennialcarbide.com
PHONE (763) 792-8546
FOUNDED 1972 MPMA 10/20/21
EMPL 1

IND SERVED Appliance,
Automation, Contract Manufacturing,
Die Casting, Fabricating

PRODUCTS / SERVICES

• Cutting Tools Distributor
• Precision Grinding

Central Lakes College

Hara Charlier
1830 Airport Rd
Staples, MN 56479
clcmn.edu
askclcc@clcmn.edu
PHONE (218) 855-8067
FOUNDED 1950 MPMA 01/21/15
EMPL 300 SQ FT 180,000

IND SERVED Manufacturing

PRODUCTS / SERVICES

• Technical Colleges/Education

Chandler Industries

Margaret Richter
260 Plymouth Ave N
Minneapolis, MN 55411
chandlerindustries.com
mrichter@chandlerindustries.com
PHONE (612) 339-8261

FOUNDED 1962 MPMA 01/28/16
EMPL 300

PRODUCTS / SERVICES

• Metal Finishing
• Production Machining
• Sheet Metal Fabrication

Cheetah Precision, Inc.

Chris Bank
2023 Old Highway 8 NW
New Brighton, MN 55112
cheetahprecision.com

chris@cheetahprecision.com

PHONE (651) 633-0530
FOUNDED 1978 MPMA 12/29/20
EMPL 24 SQ FT 38,000

PRODUCTS / SERVICES

• Milling
• Production Machining
• Turning - Swiss

Cincinnati Tool Steel Co.

Rose Wagner
5190 28th Avenue
Rockford, IL 61125
cintool.com
rwagner@cintool.com
PHONE (800) 435-0717

FOUNDED 1976 MPMA 04/18/17
EMPL 1

IND SERVED Fabricating,
Machine Job Shop, Metals, Rubber
Molding, Stamping, Tool & Die

PRODUCTS / SERVICES

• Metal Service Center
• Precision Grinding
• Sawing

Cities Advanced Machinery

Harry Youtsos
10125 Crosstown Cir Ste 110
Eden Prairie, MN 55344
cam-cnc.com
harry@cam-cnc.com
PHONE (952) 944-6060

FOUNDED 1986 MPMA 03/06/90
EMPL 4

PRODUCTS / SERVICES

• Machine Tool Sales (used)

Clovis Stamping Company, Inc.

Dennis Smith
23103 County Road 3
Merrifield, MN 56465
clowstamping.com
dsmith@clowstamping.com
PHONE (218) 765-3111

FOUNDED 1970 MPMA 01/21/19
EMPL 525 SQ FT 275,000

IND SERVED All

PRODUCTS / SERVICES

• Laser Cutting
• Stamping
• Welding - Robotic

CNC Metalcraft

Evan Lundeen
11100 Jefferson Highway N
Champlin, MN 55316
cncmetalcraft.com
evanlundeen@cncmetalcraft.com
PHONE (952) 938-3356

FOUNDED 2004 MPMA 04/06/21
EMPL 26 SQ FT 41,000

IND SERVED Metals,
Metalworking

PRODUCTS / SERVICES

• Fabricating
• Sheet & Plate Rolling
• Sheet Metal Fabrication

Colburn Manufacturing Company Inc.

Liz Wauters
7341 Commerce Lane NE
Fridley, MN 55432
colburnmfg.com
liz.wauters@colburnmfg.com
PHONE (763) 331-0589

FOUNDED 1999 MPMA 02/27/18
EMPL 16 SQ FT 15,000

IND SERVED Aerospace,
Defense, Electrical, Medical, Semi
Conductor, Solar

CERTIFICATIONS ISO 13485; ISO
2016

PRODUCTS / SERVICES

• Micro Machining
• Screw Machining
• Turning - Swiss

Columbia Precision Machine Corp.

James Johnson
2970 Lexington Avenue S
Eagan, MN 55121
columbiapmc.com
jrjohnson@columbiapmc.com
PHONE (952) 890-1003

FOUNDED 1983 MPMA 01/01/87
EMPL 24 SQ FT 22,000

IND SERVED Aerospace,
Ammunition, Aviation, Defense

PRODUCTS / SERVICES

• Milling
• Prototypes/Short Run
• Turning

Comet Tool, Inc.

Jim Freitag
1418 5th St S
Hopkins, MN 55343
comettoolinc.com
jim.freitag@comettoolinc.com
PHONE (952) 935-3798

FOUNDED 1974 MPMA 11/01/77
EMPL 15 SQ FT 12,500

IND SERVED Aerospace, Fluid
Power, Medical, Printing, Process
Control

PRODUCTS / SERVICES

• Deep Hole Drilling
• Laser Marking
• Production Machining

Command Tooling Systems LLC

Dan Ball
13931 Sunfish Lake Blvd NW
Ramsey, MN 55303
commandtool.com
dball@commandtool.com
PHONE (763) 576-6910

FOUNDED 1981 MPMA 09/29/09
EMPL 45 SQ FT 55,500

IND SERVED Aerospace,
Automotive, Energy, Government,
Machine Job Shop, Medical

PRODUCTS / SERVICES

• Milling
• Turning

CONCEPT Advanced Manufacturing Solutions

Ben Rashleiger
15625 Medina Road
Minneapolis, MN 55447
conceptmachine.com
BenR@conceptmachine.com
PHONE (763) 559-1975

FOUNDED 1974 MPMA 12/31/74
EMPL 35 SQ FT 72,700

IND SERVED Automation,
Contract Manufacturing, Distribution,
Machining, Metrology, Precision
Manufacturing

PRODUCTS / SERVICES

• Automation Integration
• Machine Tool Sales Chip Cutting
• Metrology

Continental Engr. & Mfg., Inc.

Eric Andersen
1145 Stoughton Avenue
Chaska, MN 55318
cem-web.com
eric@cem-web.com
PHONE (952) 448-4771

FOUNDED 1983 MPMA 11/06/07
EMPL 49 SQ FT 73,000

IND SERVED Agricultural,
Construction, Forestry, Industrial,
Machine Job Shop, Marine

PRODUCTS / SERVICES

• Assembly
• Machining - Large Capacity
• Production Machining

CorTrust Bank

Brian Whitmarsh
9740 Tamarack Road
St. Paul, MN 55125
cortrustbank.com
bwhitmarsh@cortrustbank.com
PHONE (651) 289-5000

FOUNDED 1930 MPMA 08/03/10
EMPL 28

IND SERVED All

PRODUCTS / SERVICES

• Banking/Financing
• Capital Equipment Financing

Craft, Pattern & Mold

Anthony Cremers
60 3rd St S
Montrose, MN 55363
craftpattern.com
tony@craftpattern.com
PHONE (763) 675-3169

FOUNDED 1986 MPMA 06/07/11
EMPL 25 SQ FT 52,500

IND SERVED Aerospace,
Agricultural, Automotive,
Construction, Industrial, Medical

PRODUCTS / SERVICES

• Foundries and Casting
• Milling
• Prototypes/Short Run

Creative Planning

Bridget Hallstrom
3800 American Blvd W, Suite 1000
Bloomington, MN 55431
creativeplanning.com
bridget.hallstrom@creativeplanning.com
PHONE (952) 563-6800

FOUNDED 1983 MPMA 2014
EMPL 2000

IND SERVED All

PRODUCTS / SERVICES

• Accounting
• Mergers & Acquisitions
• Retirement Services/Succession
Planning
• Wealth Management

Custom Mold & Design LLC

Tom Caron
22455 Everton Ave N
Forest Lake, MN 55025
custommold.net
sales@custommold.net
PHONE (763) 535-2334

FOUNDED 1965 MPMA 06/27/13
EMPL 85 SQ FT 40,000

IND SERVED Defense,
Electronics, Industrial, Plastic
Injection

PRODUCTS / SERVICES

• Mold Making
• Production Machining
• Tool and Die

D & B Plating Company (Dugas Bowers)

Vince Wheeler
7965 Main St NE
Fridley, MN 55432
d-bplating.com
vince@dugasbowers.com

PHONE (763) 784-8038

FOUNDED 1984 MPMA 09/16/13
EMPL 50 SQ FT 30,000

IND SERVED Aerospace,
Agricultural, Automotive

PRODUCTS / SERVICES

• Metal Finishing
• Plating/Coatings
• Prototypes/Short Run

Die Technology, Inc.

Dale Skoog
12925 42nd Street NE, Suite 100
St. Michael, MN 55376
dietechnology.com
dskoog@dietechnology.com
PHONE (763) 424-9677

FOUNDED 1987 MPMA 08/01/89
EMPL 27 SQ FT 15,000

IND SERVED Aerospace,
Defense, Electronics, Medical,
Precision Manufacturing

CERTIFICATIONS

ISO 9001

PRODUCTS / SERVICES

• Electrical Discharge Machining
• Micro Machining
• Tool and Die

DMG Mori USA, Inc.

Dale Mortier
2400 Huntington Blvd
Huntington Estates, IL 60192
us.dmgmori.com
dmortier@dmgmori-usa.com
PHONE (763) 218-0823

FOUNDED 2015 MPMA 09/26/17
EMPL 20

IND SERVED Aerospace,
Agricultural, Ammunition,
Automation, Automotive, Contract
Manufacturing

PRODUCTS / SERVICES

• Additive Manufacturing/Industrial
3D Printing
• Machine Tool Sales Chip Cutting
• Micro Machining

Domaille Engineering LLC

Mike Utley
7100 Dresser Dr NE
Rochester, MN 55906
domailleengineering.com
mutley@domaillecompanies.com
PHONE (507) 267-3084

FOUNDED 1990 MPMA 08/05/08
EMPL 80

IND SERVED Aerospace,
Defense

PRODUCTS / SERVICES

• Engineering & Design Services
• Milling
• Production Machining

Dotson Iron Castings

Josh Jaycox
200 W Rock St
Mankato, MN 56001
dotson.com
jjaycox@dotson.com
PHONE (507) 345-5018

FOUNDED 1876 MPMA 11/06/07
EMPL 145

IND SERVED Construction,
Railroad, Transportation

PRODUCTS / SERVICES

• Foundries and Casting
• Production Machining

DSB Rock Island, Business & Wealth Management Partners*Nancy Stanger*

1333 Northland Dr, Ste 100
Mendota Heights, MN 55120
dsb-rockisland.com
nstanger@dsb-rockisland.com

PHONE (612) 359-9630

FOUNDED 1950 **MPMA** 06/29/12
EMPL 50

IND SERVED All**PRODUCTS / SERVICES**

- Accounting
- Employee Benefits
- Insurance
- Mergers & Acquisitions
- Retirement Services/Succession Planning
- Wealth Management

Dunwoody College of Technology*Alex Wong*

818 Dunwoody Blvd
Minneapolis, MN 55403
dunwoody.edu

PHONE (612) 374-5800

FOUNDED 1914 **MPMA** 12/03/96
EMPL 210 **SQ FT** 350,000

IND SERVED Education**PRODUCTS / SERVICES**

- Technical Colleges/Education

Duo-Tec Tool Company*Dale Hanken*

8550 Revere Ln N
Maple Grove, MN 55369
duotectool.com

*dhanken@duotectool.com***PHONE** (763) 425-5005

FOUNDED 1972 **MPMA** 03/04/89
EMPL 15 **SQ FT** 20,300

IND SERVED Automotive, Computer, Electronics, Medical, Stamping**PRODUCTS / SERVICES**

- Electrical Discharge Machining
- Production Machining
- Tool and Die

Dynamic Group*Joe McGillivray*

13911 Unity St NW
Ramsey, MN 55303

dynamicgroup.com

*jmcgillivray@dynamicgroup.com***PHONE** (763) 780-8674

FOUNDED 1977 **MPMA** 05/01/80
EMPL 100 **SQ FT** 41,000

IND SERVED Contract Manufacturing, Dental, Medical, Metals, Plastic Injection**CERTIFICATIONS** FDA Registered; ISO 13485**PRODUCTS / SERVICES**

- Assembly
- Mold Making
- Plastic Injection Molding

Eckberg Lammers P.C.*Kevin Sandstrom*

1809 Northwestern Avenue
Stillwater, MN 55082

eckberglammers.com

*ksandstrom@eckberglammers.com***PHONE** (651) 439-2878**FOUNDED** 1949 **MPMA** 11/11/14**EMPL** 35**IND SERVED** All**PRODUCTS / SERVICES**

- Legal
- Mergers & Acquisitions
- Real Estate

Edge Technologies*Dean Everson*

11600 Adie Road

St. Louis, MO 63146

edgetechnologies.com

PHONE (952) 356-5236

FOUNDED 2005 **MPMA** 2024
EMPL 250

IND SERVED Automation, Distribution, Machine Job Shop, Machining, Manufacturing, Metalworking, OEM's, Precision Manufacturing**PRODUCTS / SERVICES**

- Automation Integration
- Machine Tool Manufacturer (OEM)
- Turning
- Turning - Swiss

EDM Tech Center, Inc.*Jerry Dillon*

8479 Xerxes Ave N

Minneapolis, MN 55444

edmttechcenter.com

*jerry@edmttechcenter.com***PHONE** (763) 315-9104

FOUNDED 1994 **MPMA** 1987
EMPL 5 **SQ FT** 6,500

IND SERVED Aerospace, Agricultural, Appliance, Assembly, Automation, Automotive, Computer,

Contract Manufacturing, Defense, Government, Heavy Equipment, Industrial, Industrial Equipment, Manufacturing, Military, OEM's, Off Road Equipment, Power, Restaurant, Telecommunication

PRODUCTS / SERVICES

- Electrical Discharge Machining
- Industrial Supplier
- Supply Sales

Elektro Assemblies*Jon Bush*

5140 Mound View Drive

Red Wing, MN 55066

elektroassemblies.com

*jon.bush@elektroassemblies.com***PHONE** (800) 533-1558

FOUNDED 1973 **MPMA** 09/16/20
EMPL 20 **SQ FT** 12,000

IND SERVED Aerospace, Agricultural, Appliance, Assembly, Automation, Automotive, Computer, Contract Manufacturing, Defense, Government, Heavy Equipment, Industrial, Industrial Equipment, Manufacturing, Military, OEM's, Off Road Equipment, Power, Restaurant, Telecommunication**CERTIFICATIONS** ISO 9001**PRODUCTS / SERVICES**

- Assembly

Ellison Technologies*John Schwartz*

13400 10th Ave N

Plymouth, MN 55441

ellisontechnologies.com

*jschwartz@ellisontechnologies.com***PHONE** (763) 545-9699

FOUNDED 1981 **MPMA** 01/01/89
EMPL 25 **SQ FT** 17,000

IND SERVED All**PRODUCTS / SERVICES**

- Electrical Discharge Machining
- Machine Tool Sales Chip Cutting
- Metrology
- Turning

Engineering Unlimited, Inc.*Patrick Werner*

1320 North 12th Avenue

Minneapolis, MN 55411

engunl.com

*pwwerner@engunl.com***PHONE** (612) 522-4040

FOUNDED 1968 **MPMA** 2024
EMPL 15

IND SERVED Manufacturing**PRODUCTS / SERVICES**

- Safety Equipment

Erickson Metals of MN, Inc.*Todd Siegfried*

501 93rd Ave., NW

Coon Rapids, MN 55433

ericksonmetals.com

*tsiegfried@ericksonmetals.com***PHONE** (763) 785-2340

FOUNDED 1981 **MPMA** 10/13/87
EMPL 19 **SQ FT** 55000

IND SERVED Aerospace, Defense, Manufacturing, Precision Manufacturing, Stamping, Transportation**PRODUCTS / SERVICES**

- Aluminum Coil
- Aluminum Extrusion - Plate & Sheet
- Metal Service Center

MEMBER DIRECTORY

FactoryTwin

Vivek Saxena
33 South 10th Avenue, Suite 150
Hopkins, MN 55343
factory-twin.com
vivek.saxena@factory-twin.com
PHONE (952) 204-3787
MPMA 2024
EMPL 19 **SQ FT** 55000
IND SERVED All
PRODUCTS / SERVICES
• Factory Data Analytics & AI

Falls Fabricating LLC

Dan Ortloff
600 9th Ave NW
Little Falls, MN 56345
fallsfab.com
dortloff@fallsfab.com
PHONE (320) 632-2322
FOUNDED 1935 **MPMA** 04/12/13
EMPL 86 **SQ FT** 110,000
IND SERVED Contract
Manufacturing, Fabricating,
Hydraulics, Machining,
Manufacturing, Oil & Gas, Packaging,
Precision Manufacturing
CERTIFICATIONS ISO 9001
PRODUCTS / SERVICES
• Fabricating
• Sheet Metal Fabrication
• Welding

Federated Insurance

Hunter Kennedy
1929 S Cedar Ave
Owatonna, MN 55060
federatedinsurance.com
htkennedy@fedins.com
PHONE (334) 434-0644
FOUNDED 1904 **MPMA** 04/25/90
EMPL 2700
IND SERVED All
PRODUCTS / SERVICES
• Insurance

Frandsen Bank & Trust

Brian Brakke
7303 161st St
Rosemount, MN 55068
frandsenbank.com
bbrakke@frandsenbank.com
PHONE (651) 209-3827
FOUNDED 1981 **MPMA** 10/31/18
EMPL 25
IND SERVED Banking,
Contract Manufacturing
PRODUCTS / SERVICES
• Banking/Financing

Froehling Anderson

Rick Wiethorn
400 Highway 169 South, Suite 400
Minneapolis, MN 55426
fa-cpa.com
rwiethorn@fa-cpa.com
PHONE (952) 979-3100
FOUNDED 1946 **MPMA** 02/05/08
EMPL 55
IND SERVED All
PRODUCTS / SERVICES
• Accounting
• Mergers & Acquisitions
• R & D Tax Credit Consultants

G&A Partners

Russ Simatic
7760 France Ave S, 11th Floor
Bloomington, MN 55435
gnapartners.com
rsimatic@gnapartners.com
PHONE (952) 656-0181

FOUNDED 1995 **MPMA** 12/11/17
EMPL 5

IND SERVED All

PRODUCTS / SERVICES

- Accounting
- Employee Benefits
- Human Resources (HR)
- Insurance
- Safety Consultants

Granger Machine, Inc.

Shannon Oelrich
512 1st Ave. N.
Isanti, MN 55040
grangermachine.com
shannon@grangermachine.com
PHONE (763) 444-3725
FOUNDED 1997 **MPMA** 08/05/08
EMPL 29 **SQ FT** 10,360

PRODUCTS / SERVICES

- Milling
- Production Machining
- Turning

Haimer USA

Craig Schepers
134 E Hill St
Villa Park, IL 60181
haimer-usa.com
craig.schepers@haimer-usa.com
PHONE (630) 833-1500
FOUNDED 1990 **MPMA** 03/03/15
EMPL 25
IND SERVED Precision
Manufacturing
PRODUCTS / SERVICES
• Machine Tool Sales Chip Cutting
• Machine Tool Sales Fabrication

Hennepin Technical College

Rich Kelly
9000 Brooklyn Blvd
Brooklyn Park, MN 55445
hennepintech.edu
rich.kelly@hennepintech.edu
PHONE (952) 995-1345
FOUNDED 1972 **MPMA** 1998
EMPL 300
IND SERVED Manufacturing,
Education
PRODUCTS / SERVICES
• Technical Colleges/Education

Heritage Construction Companies, LLC

Andy Christensen
10908 171st Ave NW
Elk River, MN 55330
heritageconstructionmn.com
andy@heritageconstructionmn.com
PHONE (763) 633-4080
FOUNDED 2010 **MPMA** 2014
EMPL 13 **SQ FT** 5,500
IND SERVED All, Dental,
Medical Devices
PRODUCTS / SERVICES
• Construction
• Engineering & Design Services

HSI Manufacturing

Paula Herda
1508 1st Street NE
Buffalo, MN 55313
hsmetalstamping.com
sales@hsmifginc.com
PHONE (763) 682-1114
FOUNDED 1972 **MPMA** 05/13/20
EMPL 25 **SQ FT** 70,000

IND SERVED

All

CERTIFICATIONS ISO 2015; ISO 9001

PRODUCTS / SERVICES

- Laser Cutting
- Stamping
- Tool and Die
- Welding

Huot Manufacturing Company

Tom Seivert
550 Wheeler St N
St. Paul, MN 55104
huot.com
t.seivert@huot.com
PHONE (651) 646-1869
FOUNDED 1926 **MPMA** 04/04/00
EMPL 35 **SQ FT** 46,000

IND SERVED Aerospace,
Industrial

PRODUCTS / SERVICES

- Powder Coating
- Sheet Metal Fabrication

ICA Corporation

Steve Hoaglund
12130 Brockton Ln N
Maple Grove, MN 55369
icacorp.com
steveh@icacorp.com
PHONE (763) 428-2800
FOUNDED 1970 **MPMA** 10/01/96
EMPL 95 **SQ FT** 90,000

IND SERVED Aerospace,
Defense, Electronics, Optical,
Telecommunication, Transportation

PRODUCTS / SERVICES

- Assembly
- Laser Cutting
- Powder Coating
- Production Machining
- Prototypes/Short Run
- Sheet Metal Fabrication
- Turning

Ideal Industries, Inc.

Tom Kipping
7650 303rd Ave NW
Princeton, MN 55371
idealindustriesinc.com
tom@idealindustriesinc.com
PHONE (763) 389-2736
FOUNDED 1981 **MPMA** 08/02/94
EMPL 20 **SQ FT** 30,000

IND SERVED Agricultural,
Fluid Power, Machining, Medical
Devices, Precision Manufacturing,
Stamping

PRODUCTS / SERVICES

- Milling
- Production Machining
- Prototypes/Short Run
- Stamping
- Turning

IEA, Inc.

Amy Satterfield
9201 West Broadway, Suite 600
Brooklyn Park, MN 55445
ieasafety.com
amy.satterfield@ieasafety.com
PHONE (763) 315-7900
FOUNDED 1984 **MPMA** 07/27/22
EMPL 70

IND SERVED All
PRODUCTS / SERVICES

- Engineering & Design Services
- Safety Consultants
- Environmental & Facilities Services

IEMCA

Ray Varady
9332 Forsyth Park Drive
Charlotte, NC 28273
iemca.com
r.varady@bucci-industries.com
PHONE (704) 249-5037
FOUNDED 1961 **MPMA** 08/01/18
EMPL 54

IND SERVED All

PRODUCTS / SERVICES

- Machine Tool Manufacturer (OEM)
- Material Handling
- Robotics/Automation

IFS-Industrial Fabrication Services, Inc.

Matt Doherty
460 Commerce St.
Lake Crystal, MN 56055
ifssteelfab.com
matt@ifssteelfab.com
PHONE (507) 726-6000
FOUNDED 1984 **MPMA** 06/02/09
EMPL 75 **SQ FT** 70,000

IND SERVED Machining

PRODUCTS / SERVICES

- Assembly
- Engineering & Design Services
- Fabricating

Imagineering Machine Inc.

Jesse Schellitzche
6851 Oxford St
St. Louis Park, MN 55426
imagineeringmachine.com
js@imagineeringmachine.com
PHONE (952) 922-9311
FOUNDED 1984 **MPMA** 07/22/13
EMPL 15 **SQ FT** 10,000

IND SERVED Aerospace,
Industrial, Medical, Semi Conductor

PRODUCTS / SERVICES

- Electrical Discharge Machining,
- Milling
- Turning

Industrial Compliance Services

Mike Antolik
P.O. Box 50680
Mendota, MN 55150
industrialcomplianceservices.com
mike@industrialcomplianceservices.com
PHONE (952) 474-2628
FOUNDED 2001 **MPMA** 05/06/08
EMPL 3

IND SERVED Manufacturing

PRODUCTS / SERVICES

- Recycling
- Safety Consultants

Industrial Tool Inc.

Nick Archer
1040 Lund Blvd
Anoka, MN 55303
industrial-tool.com
narcher@industrial-tool.com
PHONE (763) 533-7244
FOUNDED 1974 **MPMA** 2024
EMPL 50

IND SERVED Aerospace,
Agricultural, Assembly, Automation,
Automotive, Defense, Foundries,
Machining

PRODUCTS / SERVICES

- Assembly
- Automation Integration
- Robotics/Automation
- Workholding

Infinity Robotics LLC

Dave Neville
5505 West 123rd St., Suite 540 Door D
Savage, MN 55378
infinityrobotics.com
dneville@infinityrobotics.com
PHONE (952) 210-0536
FOUNDED 2019 **MPMA** 12/06/19
EMPL 4 **SQ FT** 10,000

IND SERVED All

PRODUCTS / SERVICES

- Automation Integration
- Material Handling
- Robotics/Automation

International Precision Machining, Inc.

Eric Meyer
511 Sundial Drive
Waite Park, MN 56387
ipmnc.com
ericm@ipmnc.com
PHONE (320) 656-1241
FOUNDED 1992 **MPMA** 02/04/04
EMPL 40 **SQ FT** 32,000

IND SERVED Aerospace,
Agricultural, Forestry, Gear
Manufacturing, Military, Off Road
Equipment, Precision Manufacturing

CERTIFICATIONS

ISO 9001; ISO 2015

PRODUCTS / SERVICES

- Gear Cutting and Broaching
- Production Machining
- Turning

Iron Machine Tool

Steve Brown
700 Central Ave NE
Minneapolis, MN 55414
ironmachinetool.com
steve.brown@ironmachinetool.com
PHONE (630) 347-9559
MPMA 05/21/21
EMPL 1

IND SERVED Machining,
Medical, Plastic Injection, Precision
Manufacturing, Stamping, Tool & Die

PRODUCTS / SERVICES

- Electrical Discharge Machining
- Machine Tool Manufacturer (OEM)
- Micro Machining

ISO Finishing, Inc.

Mike Klein
9740 86th Ave N
Maple Grove, MN 55369
isofinishing.com
mike@isofinishing.com
PHONE (763) 273-1052
FOUNDED 2005 **MPMA** 04/10/15
EMPL 4 **SQ FT** 4,500

IND SERVED Aerospace,
Aviation, Contract Manufacturing,
Medical Devices, OEM's, Precision
Manufacturing

PRODUCTS / SERVICES

- DeBurring
- Metal Finishing

J&J Machine, Inc.

John Lenz
12655 Industrial Blvd. NW
Elk River, MN 55330
jandjmachine.com
sales@jandjmachine.com
PHONE (763) 421-0114
FOUNDED 1977 **MPMA** 08/15/86
EMPL 48 **SQ FT** 43,000

IND SERVED

Medical

PRODUCTS / SERVICES

- Machine Tool Manufacturer (OEM)
- Production Machining
- Prototypes/Short Run

Jonaco Machine

Jeff Hayes
3990 Peavey Rd
Chaska, MN 55318
jonaco.com
jrhayes@jonaco.com
PHONE (952) 448-5544
FOUNDED 1971 **MPMA** 04/01/82
EMPL 150 **SQ FT** 85,000

IND SERVED

Aerospace,
Aviation, Defense, Industrial,
Machining, Medical, Precision

Manufacturing, Semi Conductor, Technology

PRODUCTS / SERVICES

- Machining - Large Capacity
- Milling
- Production Machining
- Screw Machining
- Turning

Jones Metal, Inc.

Valerie Bentsdahl
3201 3rd Ave.
Mankato, MN 56001
jonesmetalinc.com
vbentsdahl@jonesmetalinc.com
PHONE (507) 625-4436

FOUNDED 1942 **MPMA** 2009
EMPL 100

IND SERVED All

PRODUCTS / SERVICES

- Fabricating
- Laser Cutting
- Welding - Robotic

K & G Manufacturing Co.

Ashley Strouth
PO Box 187
Faribault, MN 55021
kgmfg.com
invoices@kgmfg.com
PHONE (507) 334-5501

FOUNDED 1937 **MPMA** 05/06/97
EMPL 78 **SQ FT** 41,000

IND SERVED Aerospace, Defense, Marine, Medical, Technology

PRODUCTS / SERVICES

- Milling
- Production Machining
- Turning

Kendall Howard

Randy Herreid
10152 Liberty Lane
Chisago City, MN 55013
kendallhoward.com
rherreid@kendallhoward.com
PHONE (651) 213-1333

FOUNDED 2004 **MPMA** 07/29/21
EMPL 58 **SQ FT** 80,000

IND SERVED All

PRODUCTS / SERVICES

- Assembly
- Engineering & Design Services
- Prototypes/Short Run
- Sheet Metal Fabrication
- Tube/Wire Bending & Fabrication
- Welding - Robotic

KLC Financial, Inc.

Gyles Uhlenhopp
4350 Baker Road, Suite 100
Minnetonka, MN 55343
klcfinancial.com
info@klcfinancial.com
PHONE (952) 224-4300

FOUNDED 1987 **MPMA** 02/07/13
EMPL 20 **SQ FT** 4,800

IND SERVED All

PRODUCTS / SERVICES

- Banking/Financing
- Capital Equipment Financing

Klesk Metal Stamping Co

Jeff Marone
1124 Northeast Stinson Blvd.
Minneapolis, MN 55406
kleskmetalstamping.com
jeffm@kleskmetalstamping.com
PHONE (612) 331-8792

FOUNDED 1963 **MPMA** 2023
EMPL 43

IND SERVED Aerospace,

Computer, Contract Manufacturing, Defense, Military, Precision Manufacturing

CERTIFICATIONS ISO 9001;Nadcap

PRODUCTS / SERVICES

- Electrical Discharge Machining
- Stamping
- Tool and Die

Korin Electronics Repair & Assembly

Tom Korin
8850 County Road 6 NW
Princeton, MN 55371
kerainc.com
tom@kerainc.com

PHONE (612) 889-6435

FOUNDED 2012 **MPMA** 03/04/14
EMPL 2 **SQ FT** 1,000

IND SERVED Manufacturing

PRODUCTS / SERVICES

- Machine & Electrical Repair
- Tool Repair/Service
- Electrical Services & Assembly

Kurt Manufacturing Company Inc.

Kristi Teasley
5280 Main Street NE
Minneapolis, MN 55421
kurt.com

PHONE (763) 572-1500

FOUNDED 1946 **MPMA** 10/01/55
EMPL 182 **SQ FT** 120,000

IND SERVED Aerospace, Defense, Energy, Off Road Equipment, Semi Conductor

PRODUCTS / SERVICES

- Milling
- Turning
- Workholding

Lake Engineering, Inc.

Mike Magnuson
2085 Daniels Street, P.O. Box 787
Long Lake, MN 55356
lakeengineering.com
mikem@lakeengineering.com

PHONE (952) 253-2400

FOUNDED 1951 **MPMA** 12/21/87
EMPL 33 **SQ FT** 25,000

IND SERVED Aviation

PRODUCTS / SERVICES

- Milling
- Production Machining
- Turning

Lake Superior College

Nathan Zobel
2101 Trinity Rd
Duluth, MN 55811
lsc.edu

PHONE (218) 733-7732

FOUNDED 1970 **MPMA** 11/07/00
SQ FT 5,000

IND SERVED Education

PRODUCTS / SERVICES

- Technical Colleges/Education

Larkin Hoffman Attorneys

Mark Geier
8300 Norman Center Dr Ste 1000
Bloomington, MN 55437
larkinhoffman.com
mgeier@larkinhoffman.com

PHONE (952) 896-3228

FOUNDED 1958 **MPMA** 05/06/08
EMPL 157

IND SERVED All

PRODUCTS / SERVICES

- Employee Benefit
- Legal
- Mergers & Acquisitions

Larson Building Inc.

Andy Larson
200 1st Street South
Buffalo, MN 55313
larsonbuilding.com
andy.larson@larsonbuilding.com
PHONE (763) 634-5600

FOUNDED 2011 **MPMA** 03/27/18
EMPL 15

IND SERVED Manufacturing, All

PRODUCTS / SERVICES

- Construction
- Real Estate

LB Carlson, LLP

Dea Johnson
605 U.S. Highway 169 N., Suite 650
Minneapolis, MN 55441
carlson-advisors.com
djohnson@lbcarlson.com
PHONE (763) 971-4819

FOUNDED 1974 **MPMA** 05/04/93
EMPL 55 **SQ FT** 12,000

IND SERVED Construction, Energy, Manufacturing, Precision Manufacturing, Professional Services, Transportation

PRODUCTS / SERVICES

- Accounting
- Mergers & Acquisitions
- R & D Tax Credit Consultants

Lion Engineering Plastics, Inc.

Scott King
1207 Cliff Road E.
Burnsville, MN 55337
lionep.com
sking@lionep.com
PHONE (952) 641-6300

FOUNDED 2008 **MPMA** 03/03/09
EMPL 5 **SQ FT** 7,200

IND SERVED Automation, Machine Job Shop, Machining, Manufacturing, OEM's

PRODUCTS / SERVICES

- Plastic Sheet Rod & Tube
- Sawing

Lowell, Inc.

Ron Spah
9425 83rd Ave N
Brooklyn Park, MN 55445
lowellinc.com
ron.spah@lowellinc.com
PHONE (612) 493-6648

FOUNDED 1964 **MPMA** 03/07/16
EMPL 80 **SQ FT** 51,000

IND SERVED Medical

PRODUCTS / SERVICES

- Assembly
- Production Machining
- Turning - Swiss

Lube-Tech

Mike Jordan
858 Transfer Rd.
St. Paul, MN 55114
lubetech.com
mikejor@lubetech.com
PHONE (651) 636-7990

FOUNDED 1993 **MPMA** 12/31/93
EMPL 1000 **SQ FT** 300,000

IND SERVED Machining, Metalworking

PRODUCTS / SERVICES

- Coolants/Lubricants
- Lubrication Equipment & Systems
- Recycling

M. Vincent & Associates, Ltd.

David Hannah
9341 Penn Ave. S.
Bloomington, MN 55431
vincentmetals.com
dhannah@vincentmetals.com
PHONE (952) 884-7733

FOUNDED 1980 **MPMA** 11/17/86
EMPL 10 **SQ FT** 8,000

IND SERVED Aerospace, Defense, Medical, Power

CERTIFICATIONS AS 9120; ISO 9001

PRODUCTS / SERVICES

- Metal Service Center

Machining Technology

Laurent Deconinck
7700 68th Avenue N, Suite 7
Brooklyn Park, MN 55428
machining-technology.com
ldeconinck@machining-technology.com
PHONE (763) 571-1772

FOUNDED 1955 **MPMA** 07/22/13
EMPL 14 **SQ FT** 66,000

IND SERVED Agricultural, Automation, Construction, Die Casting, Plastic Injection

PRODUCTS / SERVICES

- Machining - Large Capacity
- Mold Making
- Turning

Mack Engineering Corp.

Jennifer Salisbury
3215 E. 26th St.
Minneapolis, MN 55406
mackengineering.com
jennifer.s@mackengineering.com
PHONE (612) 721-2471

FOUNDED 1943 **MPMA** 02/03/94
EMPL 24 **SQ FT** 31,000

IND SERVED Automotive, Hydraulics, Medical, Motion Control

PRODUCTS / SERVICES

- Milling
- Turning
- Turning - Swiss

Maertens-Brenny Construction

Erica Foster
8251 Main Street Northeast
Minneapolis, MN 55432
maertensbrenny.com
efoster@maertensbrenny.com
PHONE (763) 786-4779

FOUNDED 1981 **MPMA** 2023
EMPL 10

IND SERVED All

PRODUCTS / SERVICES

- Construction
- Engineering & Design Services
- Environmental & Facilities Services

Magnetic North

Matt Timm
10925 Valley View Rd., Suite 102
Eden Prairie, MN 55344
magnorth.com
m.timm@magnorth.com
PHONE (952) 221-7931

FOUNDED 2011 **MPMA** 11/18/20
EMPL 7

IND SERVED All

PRODUCTS / SERVICES

- Marketing Services

Mars Supply

Bob Mars
205 5th Ave NW
New Brighton, MN 55112
marssupply.com

rmars3@marssupply.com
PHONE (952) 703-8624

FOUNDED 1924 **MPMA** 11/01/76
EMPL 250 **SQ FT** 70,000

IND SERVED ALL

PRODUCTS / SERVICES

- Abrasives
- Cutting Tools Distributor
- Safety Consultants
- Safety Equipment
- Supply Sales

Martin Calibration Inc.

Mark Hirsch
11965 12th Ave S Ste 100
Burnsville, MN 55337
martincalibration.com
mhirsch@martincalibration.com
PHONE (952) 882-1528

FOUNDED 1980 **MPMA** 11/04/08
EMPL 43 **SQ FT** 20,000

IND SERVED Aerospace, Automotive, Computer, Medical, Nuclear

PRODUCTS / SERVICES

- Metrology

Maruka USA

Matt Kelly
1040 Lund Blvd.
Anoka, MN 55303
marukausa.com
mkelly@marukausa.com
PHONE (800) 262-7852

FOUNDED 1968 **MPMA** 11/09/22
EMPL 9

IND SERVED Aerospace, Medical, Tool & Die

PRODUCTS / SERVICES

- Machine Tool Sales Chip Cutting
- Machine Tool Sales Fabrication
- Machine Tool Sales (Used)

Master Fluid Solutions

Justin Boespflug
501 W Boundary St
Perrysburg, OH 43551
masterfluidsolutions.com/na/en-us
jboespflug@masterfluids.com
PHONE (612) 209-5004

FOUNDED 1951 **MPMA** 11/11/20
EMPL 2

IND SERVED Aviation, Machining, Manufacturing

PRODUCTS / SERVICES

- Coolants/Lubricants
- Recycling

Mate Precision Technologies

Joe Schneider
1295 Lund Blvd.
Anoka, MN 55303
mate.com
joe.schneider@mate.com
PHONE (763) 421-0230

FOUNDED 1962 **MPMA** 06/13/06
EMPL 300 **SQ FT** 300,000

IND SERVED Aerospace, Agricultural, Contract Manufacturing, Fabricating, HVAC, Industrial, Machine Job Shop, Machining, Manufacturing, Metalworking, Precision Manufacturing, Tool & Die

PRODUCTS / SERVICES

- Machining - Large Capacity
- Tool and Die
- Workholding

MEMBER DIRECTORY

Mathias Die Company, Inc.

Matt Bignell
391 Malden Street S.
St. Paul, MN 55075
mathias-die.com
mbignell@mathias-die.com
PHONE (651) 451-0105
FOUNDED 1963 **MPMA** 11/01/69
EMPL 13 **SQ FT** 21,000
IND SERVED All, Aerospace,
Automotive, Contract Manufacturing,
Manufacturing, Medical Devices
PRODUCTS / SERVICES
• Production Machining
• Tool and Die
• Tool Repair/Service

Matsuura Machinery USA

Billy Bogue
325 Randolph Ave Ste 100
St. Paul, MN 55102
matsuurausa.com
billy.bogue@matsuurausa.com
PHONE (651) 289-9713
FOUNDED 1935 **MPMA** 04/02/13
EMPL 28 **SQ FT** 40,000
IND SERVED Aerospace,
Automotive, Electronics, Medical,
Telecommunication
PRODUCTS / SERVICES
• Machine Tool Manufacturer (OEM)
• Machine Tool Sales Chip Cutting
• Tool Repair/Service

Maxcam Corp.

Chuck Olson
4205 White Bear Parkway, Suite 100
St. Paul, MN 55110
maxcamcorp.com
chucko@maxcamcorp.com
PHONE (651) 653-0969
FOUNDED 1998 **MPMA** 06/14/18
EMPL 17 **SQ FT** 12,000
IND SERVED Contract
Manufacturing, Machine Job Shop,
Plastics, Precision Manufacturing,
Prototype, Semi Conductor
PRODUCTS / SERVICES
• Milling
• Prototypes/Short Run
• Turning

Metal Craft

Trisha Mowry
13760 Business Center Drive NW
Elk River, MN 55330
mccandrs.com
trisha@metal-craft.com
PHONE (763) 441-1855
FOUNDED 1978 **MPMA** 09/18/07
EMPL 145 **SQ FT** 83,000
IND SERVED Aerospace,
Aviation, Defense, Medical Devices
PRODUCTS / SERVICES
• Assembly
• Production Machining
• Prototypes/Short Run

Metal Trade Solutions

Tobias Flood
311 1st Street North
Winsted, MN 55395
metalts.com
sales@metalts.com
PHONE (320) 510-4292
FOUNDED 2017 **MPMA** 2024
EMPL 10
IND SERVED All
PRODUCTS / SERVICES
• Fabricating
• Production Machining
• Welding

Micro-Matics Inc.

Tony Herbst
8050 Ranchers Road NE
Fridley, MN 55432
micro-matics.com
therbst@micro-matics.com
PHONE (763) 780-2700
FOUNDED 1973 **MPMA** 10/07/97
EMPL 45 **SQ FT** 22,500
IND SERVED Aerospace,
Automotive, Aviation, Defense,
Electronics, Medical
CERTIFICATIONS AS 9100; ISO; ISO
13485; ITAR Registered; Nadcap
PRODUCTS / SERVICES
• DeBurring
• Micro Machining
• Precision Grinding
• Prototypes/Short Run
• Turning - Swiss

MicroWeld

Derick White
10550 County Road 81, Suite 112
Maple Grove, MN 55369
microweldinc.com
derick.white@microweldinc.com
PHONE (763) 425-8818
FOUNDED 1990 **MPMA** 2024
EMPL 10
IND SERVED All
PRODUCTS / SERVICES
• Welding

Midwest CAM Solutions, LLC

Don Casanova
9220 Bass Lake Road #380
New Hope, MN 55428
midwestcamsolutions.com
don@midwestcamsolutions.com
PHONE (763) 560-6567
FOUNDED 1990 **MPMA** 01/10/94
EMPL 4 **SQ FT** 3,032
IND SERVED All
PRODUCTS / SERVICES
• Computer Software & Training
• Milling
• Turning - Swiss

Midwest Machine Tool Supply

Doug Eliason
230 Commerce Circle S.
Minneapolis, MN 55432
midwestmachinetool.com
doug@midwestmachinetool.com
PHONE (763) 571-3550
FOUNDED 1948 **MPMA** 10/01/56
EMPL 12 **SQ FT** 17,000
IND SERVED Agricultural,
Food, Manufacturing, Medical,
Packaging, Printing
PRODUCTS / SERVICES
• Cutting Tools Distributor
• Hydraulic/Pneumatics
• Workholding

Midwest Steel Supply Company

Brandon Walton
14255 James Road
Rogers, MN 55374
midweststeelsupply.com
bw@midweststeelsupply.com
PHONE (763) 582-1925
FOUNDED 1960 **MPMA** 01/01/74
EMPL 45 **SQ FT** 60,000
IND SERVED Machine Job
Shop, Machining, Manufacturing,
OEM's, Tool & Die
PRODUCTS / SERVICES
• Aluminum Extrusion - Plate & Sheet
• Metal Service Center
• Sawing

Milltronics, USA

Steve Schermann
1400 Mill Lane
Waconia, MN 55387
milltronics.net
sschermann@milltronics.com
PHONE (952) 442-1410
FOUNDED 1973 **MPMA** 08/03/04
EMPL 59 **SQ FT** 100,000
IND SERVED Aerospace,
Automotive, Fabricating,
Manufacturing, Tool & Die
PRODUCTS / SERVICES
• Machine Tool Manufacturer (OEM)

FOUNDED 1980 **MPMA** 02/02/99
SQ FT 5,500
IND SERVED Education
PRODUCTS / SERVICES
• Technical Colleges/Education
Minnesota Grinding, Inc.
Nolan Schoening
5400 Douglas Drive North
Minneapolis, MN 55429
minnesotagrinding.com
nolan@minnesotagrinding.com
PHONE (763) 535-4445
FOUNDED 1959 **MPMA** 08/05/08
EMPL 38 **SQ FT** 43,000
IND SERVED Aerospace,
Contract Manufacturing, Defense,
Industrial, Manufacturing, Medical
PRODUCTS / SERVICES
• Honing - Lapping and Finishing
• Metal Finishing
• Precision Grinding

Minneapolis Community & Technical College

Paul Fiege
1501 Hennepin Ave
Minneapolis, MN 55403
minneapolis.edu
paul.fiege@minneapolis.edu
PHONE (612) 659-6000
FOUNDED 1980 **MPMA** 02/02/99
SQ FT 5,500
IND SERVED Education
PRODUCTS / SERVICES
• Technical Colleges/Education

Minnesota Grinding, Inc.

Nolan Schoening
5400 Douglas Drive North
Minneapolis, MN 55429
minnesotagrinding.com
nolan@minnesotagrinding.com
PHONE (763) 535-4445
FOUNDED 1959 **MPMA** 08/05/08
EMPL 38 **SQ FT** 43,000
IND SERVED Aerospace,
Contract Manufacturing, Defense,
Industrial, Manufacturing, Medical
PRODUCTS / SERVICES
• Honing - Lapping and Finishing
• Metal Finishing
• Precision Grinding

FOUNDED 1998 **MPMA** 2017
EMPL 12
IND SERVED Aerospace,
Aviation, Defense, Gear
Manufacturing, Medical, Military
PRODUCTS / SERVICES
• Precision Grinding
• Tool and Die
• Tool Repair/Service

Minnesota Tool Group, Inc.
Marcus Amble
1324 Second Ave. NE
Glenwood, MN Glenwood
minnesotatoolgroup.com
mtg@minnesotatoolgroup.com
PHONE (320) 634-0609
FOUNDED 1998 **MPMA** 2017
EMPL 12
IND SERVED Aerospace,
Aviation, Defense, Gear
Manufacturing, Medical, Military
PRODUCTS / SERVICES
• Precision Grinding
• Tool and Die
• Tool Repair/Service

Minnesota Tool Group, Inc.
Marcus Amble
1324 Second Ave. NE
Glenwood, MN Glenwood
minnesotatoolgroup.com
mtg@minnesotatoolgroup.com
PHONE (320) 634-0609
FOUNDED 1998 **MPMA** 2017
EMPL 12
IND SERVED Aerospace,
Aviation, Defense, Gear
Manufacturing, Medical, Military
PRODUCTS / SERVICES
• Precision Grinding
• Tool and Die
• Tool Repair/Service

Minnesota Tool Group, Inc.

Marcus Amble
1324 Second Ave. NE
Glenwood, MN Glenwood
minnesotatoolgroup.com
mtg@minnesotatoolgroup.com
PHONE (320) 634-0609
FOUNDED 1998 **MPMA** 2017
EMPL 12
IND SERVED Aerospace,
Aviation, Defense, Gear
Manufacturing, Medical, Military
PRODUCTS / SERVICES
• Precision Grinding
• Tool and Die
• Tool Repair/Service

Minnesota Tool Group, Inc.
Marcus Amble
1324 Second Ave. NE
Glenwood, MN Glenwood
minnesotatoolgroup.com
mtg@minnesotatoolgroup.com
PHONE (320) 634-0609
FOUNDED 1998 **MPMA** 2017
EMPL 12
IND SERVED Aerospace,
Aviation, Defense, Gear
Manufacturing, Medical, Military
PRODUCTS / SERVICES
• Precision Grinding
• Tool and Die
• Tool Repair/Service

Minnesota Tool Group, Inc.
Marcus Amble
1324 Second Ave. NE
Glenwood, MN Glenwood
minnesotatoolgroup.com
mtg@minnesotatoolgroup.com
PHONE (320) 634-0609
FOUNDED 1998 **MPMA** 2017
EMPL 12
IND SERVED Aerospace,
Aviation, Defense, Gear
Manufacturing, Medical, Military
PRODUCTS / SERVICES
• Precision Grinding
• Tool and Die
• Tool Repair/Service

Minnesota Tool Group, Inc.
Marcus Amble
1324 Second Ave. NE
Glenwood, MN Glenwood
minnesotatoolgroup.com
mtg@minnesotatoolgroup.com
PHONE (320) 634-0609
FOUNDED 1998 **MPMA** 2017
EMPL 12
IND SERVED Aerospace,
Aviation, Defense, Gear
Manufacturing, Medical, Military
PRODUCTS / SERVICES
• Precision Grinding
• Tool and Die
• Tool Repair/Service

Minnesota Tool Group, Inc.
Marcus Amble
1324 Second Ave. NE
Glenwood, MN Glenwood
minnesotatoolgroup.com
mtg@minnesotatoolgroup.com
PHONE (320) 634-0609
FOUNDED 1998 **MPMA** 2017
EMPL 12
IND SERVED Aerospace,
Aviation, Defense, Gear
Manufacturing, Medical, Military
PRODUCTS / SERVICES
• Precision Grinding
• Tool and Die
• Tool Repair/Service

Minnesota Tool Group, Inc.
Marcus Amble
1324 Second Ave. NE
Glenwood, MN Glenwood
minnesotatoolgroup.com
mtg@minnesotatoolgroup.com
PHONE (320) 634-0609
FOUNDED 1998 **MPMA** 2017
EMPL 12
IND SERVED Aerospace,
Aviation, Defense, Gear
Manufacturing, Medical, Military
PRODUCTS / SERVICES
• Precision Grinding
• Tool and Die
• Tool Repair/Service

Minnesota Tool Group, Inc.
Marcus Amble
1324 Second Ave. NE
Glenwood, MN Glenwood
minnesotatoolgroup.com
mtg@minnesotatoolgroup.com
PHONE (320) 634-0609
FOUNDED 1998 **MPMA** 2017
EMPL 12
IND SERVED Aerospace,
Aviation, Defense, Gear
Manufacturing, Medical, Military
PRODUCTS / SERVICES
• Precision Grinding
• Tool and Die
• Tool Repair/Service

Minnesota Tool Group, Inc.
Marcus Amble
1324 Second Ave. NE
Glenwood, MN Glenwood
minnesotatoolgroup.com
mtg@minnesotatoolgroup.com
PHONE (320) 634-0609
FOUNDED 1998 **MPMA** 2017
EMPL 12
IND SERVED Aerospace,
Aviation, Defense, Gear
Manufacturing, Medical, Military
PRODUCTS / SERVICES
• Precision Grinding
• Tool and Die
• Tool Repair/Service

Minnesota Tool Group, Inc.
Marcus Amble
1324 Second Ave. NE
Glenwood, MN Glenwood
minnesotatoolgroup.com
mtg@minnesotatoolgroup.com
PHONE (320) 634-0609
FOUNDED 1998 **MPMA** 2017
EMPL 12
IND SERVED Aerospace,
Aviation, Defense, Gear
Manufacturing, Medical, Military
PRODUCTS / SERVICES
• Precision Grinding
• Tool and Die
• Tool Repair/Service

Minnesota Tool Group, Inc.
Marcus Amble
1324 Second Ave. NE
Glenwood, MN Glenwood
minnesotatoolgroup.com
mtg@minnesotatoolgroup.com
PHONE (320) 634-0609
FOUNDED 1998 **MPMA** 2017
EMPL 12
IND SERVED Aerospace,
Aviation, Defense, Gear
Manufacturing, Medical, Military
PRODUCTS / SERVICES
• Precision Grinding
• Tool and Die
• Tool Repair/Service

Minnesota Tool Group, Inc.
Marcus Amble
1324 Second Ave. NE
Glenwood, MN Glenwood
minnesotatoolgroup.com
mtg@minnesotatoolgroup.com
PHONE (320) 634-0609
FOUNDED 1998 **MPMA** 2017
EMPL 12
IND SERVED Aerospace,
Aviation, Defense, Gear
Manufacturing, Medical, Military
PRODUCTS / SERVICES
• Precision Grinding
• Tool and Die
• Tool Repair/Service

Minnesota Tool Group, Inc.
Marcus Amble
1324 Second Ave. NE
Glenwood, MN Glenwood
minnesotatoolgroup.com
mtg@minnesotatoolgroup.com
PHONE (320) 634-0609
FOUNDED 1998 **MPMA** 2017
EMPL 12
IND SERVED Aerospace,
Aviation, Defense, Gear
Manufacturing, Medical, Military
PRODUCTS / SERVICES
• Precision Grinding
• Tool and Die
• Tool Repair/Service

Minnesota Tool Group, Inc.
Marcus Amble
1324 Second Ave. NE
Glenwood, MN Glenwood
minnesotatoolgroup.com
mtg@minnesotatoolgroup.com
PHONE (320) 634-0609
FOUNDED 1998 **MPMA** 2017
EMPL 12
IND SERVED Aerospace,
Aviation, Defense, Gear
Manufacturing, Medical, Military
PRODUCTS / SERVICES
• Precision Grinding
• Tool and Die
• Tool Repair/Service

Minnesota Tool Group, Inc.
Marcus Amble
1324 Second Ave. NE
Glenwood, MN Glenwood
minnesotatoolgroup.com
mtg@minnesotatoolgroup.com
PHONE (320) 634-0609
FOUNDED 1998 **MPMA** 2017
EMPL 12
IND SERVED Aerospace,
Aviation, Defense, Gear
Manufacturing, Medical, Military
PRODUCTS / SERVICES
• Precision Grinding
• Tool and Die
• Tool Repair/Service

Minnesota Tool Group, Inc.
Marcus Amble
1324 Second Ave. NE
Glenwood, MN Glenwood
minnesotatoolgroup.com
mtg@minnesotatoolgroup.com
PHONE (320) 634-0609
FOUNDED 1998 **MPMA** 2017
EMPL 12
IND SERVED Aerospace,
Aviation, Defense, Gear
Manufacturing, Medical, Military
PRODUCTS / SERVICES
• Precision Grinding
• Tool and Die
• Tool Repair/Service

Minnesota Tool Group, Inc.
Marcus Amble
1324 Second Ave. NE
Glenwood, MN Glenwood
minnesotatoolgroup.com
mtg@minnesotatoolgroup.com
PHONE (320) 634-0609
FOUNDED 1998 **MPMA** 2017
EMPL 12
IND SERVED Aerospace,
Aviation, Defense, Gear
Manufacturing, Medical, Military
PRODUCTS / SERVICES
• Precision Grinding
• Tool and Die
• Tool Repair/Service

Minnesota Tool Group, Inc.
Marcus Amble
1324 Second Ave. NE
Glenwood, MN Glenwood
minnesotatoolgroup.com
mtg@minnesotatoolgroup.com
PHONE (320) 634-0609
FOUNDED 1998 **MPMA** 2017
EMPL 12
IND SERVED Aerospace,
Aviation, Defense, Gear
Manufacturing, Medical, Military
PRODUCTS / SERVICES
• Precision Grinding
• Tool and Die
• Tool Repair/Service

EMPL 200
IND SERVED Education
PRODUCTS / SERVICES
• Technical Colleges/Education

Minnesota State Engineering Center of Excellence

Jason Bruns
131 Trafton Science Center North
Mankato, MN 56001
engineering.mnsu.edu
jason.bruns@mnsu.edu
PHONE (507) 389-1309
FOUNDED 2006 **MPMA** 09/28/16
EMPL 3
IND SERVED Education
PRODUCTS / SERVICES
• Technical Colleges/Education

Minnesota Tool and Die Works, Inc.

Kathy Weeks
6220 McKinley St. NW
Ramsey, MN 55303
mtdwi.com
kathy@mtdwi.com
PHONE (763) 323-0145
FOUNDED 1991 **MPMA** 09/02/15
EMPL 21 **SQ FT** 21,000
IND SERVED Automotive,
Home, Lighting
PRODUCTS / SERVICES
• Tool and Die

Minnesota Waterjet, Inc.

Marj Velishek
14445 Azurite St NW
Ramsey, MN 55303
mnwaterjet.com
marjv@mnwaterjet.com
PHONE (763) 427-2114
FOUNDED 2003 **MPMA** 2024
EMPL 16 **SQ FT** 21,000
IND SERVED All
CERTIFICATIONS ISO 2016
PRODUCTS / SERVICES
• Water Jet Cutting

MnTAP - Minnesota Technical Assistance Program

Jon Schroeder
200 Oak St. SE, Suite 350-1
Minneapolis, MN 55455
mntap.umn.edu
jschro@umn.edu
PHONE (612) 624-4645
FOUNDED 1984 **MPMA** 03/12/19
EMPL 12
IND SERVED All
PRODUCTS / SERVICES
• Recycling
• Technical Colleges/Education
• Environmental & Facilities Services

Modern Commercial Real Estate

David Wiegatz
5151 Edina Industrial Blvd. Suite 400
Edina, MN 55439
modern-cre.com
davidw@modern-cre.com
PHONE (952) 929-2020
FOUNDED 2013 **MPMA** 2024
EMPL 10
IND SERVED All,
Manufacturing
PRODUCTS / SERVICES
• Real Estate

Modern Manufacturing & Engineering, Inc.

Nancy Lien Berndt
9380 Winnetka Avenue N.
Brooklyn Park, MN 55445
mmeincmn.com
nancyl@mmeincmn.com
PHONE (612) 781-3347
FOUNDED 1954 **MPMA** 07/22/19
EMPL 155 **SQ FT** 100,000
IND SERVED Aerospace,
Defense, Machine Job Shop,
Machining, Manufacturing, Precision
Manufacturing
PRODUCTS / SERVICES
• Milling
• Turning
• Turning - Swiss

Mold-Tech, Inc.

Rebecca Ford
5166 Barthel Industrial Dr NE
Albertville, MN 55301
mold-techinc.com
rford@mold-techinc.com
PHONE (763) 497-7500
FOUNDED 1978 **MPMA** 07/15/93
EMPL 34 **SQ FT** 12,000
IND SERVED Automotive,
Medical
PRODUCTS / SERVICES
• Electrical Discharge Machining
• Micro Machining
• Mold Making

Morris Midwest MN

Todd Campbell
9495 Winnetka Ave N, Suite 100
Brooklyn Park, MN 55445
morrismidwest.com
tcampbell@morrismidwest.com
PHONE (763) 424-5622
FOUNDED 1982 **MPMA** 12/31/84
EMPL 33
IND SERVED Aerospace,
Agricultural, Ammunition,
Automation, Automotive, Aviation,
Boating, Contract Manufacturing,
Machining, Manufacturing
PRODUCTS / SERVICES
• Additive Manufacturing/Industrial
3D Printing
• Laser Marking
• Machine Tool Sales Chip Cutting

FOUNDED 1982 **MPMA** 12/31/84
EMPL 33
IND SERVED Aerospace,
Agricultural, Ammunition,
Automation, Automotive, Aviation,
Boating, Contract Manufacturing,
Machining, Manufacturing
PRODUCTS / SERVICES
• Additive Manufacturing/Industrial
3D Printing
• Laser Marking
• Machine Tool Sales Chip Cutting

FOUNDED 1982 **MPMA** 12/31/84
EMPL 33
IND SERVED Aerospace,
Agricultural, Ammunition,
Automation, Automotive, Aviation,
Boating, Contract Manufacturing,
Machining, Manufacturing
PRODUCTS / SERVICES
• Additive Manufacturing/Industrial
3D Printing
• Laser Marking
• Machine Tool Sales Chip Cutting

FOUNDED 1982 **MPMA** 12/31/84
EMPL 33
IND SERVED Aerospace,
Agricultural, Ammunition,
Automation, Automotive, Aviation,
Boating, Contract Manufacturing,
Machining, Manufacturing
PRODUCTS / SERVICES
• Additive Manufacturing/Industrial
3D Printing
• Laser Marking
• Machine Tool Sales Chip Cutting

FOUNDED 1982 **MPMA** 12/31/84
EMPL 33
IND SERVED Aerospace,
Agricultural, Ammunition,
Automation, Automotive, Aviation,
Boating, Contract Manufacturing,
Machining, Manufacturing
PRODUCTS / SERVICES
• Additive Manufacturing/Industrial
3D Printing
• Laser Marking
• Machine Tool Sales Chip Cutting

FOUNDED 1982 **MPMA** 12/31/84
EMPL 33
IND SERVED Aerospace,
Agricultural, Ammunition,
Automation, Automotive, Aviation,
Boating, Contract Manufacturing,
Machining, Manufacturing
PRODUCTS / SERVICES
• Additive Manufacturing/Industrial
3D Printing
• Laser Marking
• Machine Tool Sales Chip Cutting

FOUNDED 1982 **MPMA** 12/31/84
EMPL 33
IND SERVED Aerospace,
Agricultural, Ammunition,
Automation, Automotive, Aviation,
Boating, Contract Manufacturing,
Machining, Manufacturing
PRODUCTS / SERVICES
• Additive Manufacturing/Industrial
3D Printing
• Laser Marking
• Machine Tool Sales Chip Cutting

FOUNDED 1982 **MPMA** 12/31/84
EMPL 33
IND SERVED Aerospace,
Agricultural, Ammunition,
Automation, Automotive, Aviation,
Boating, Contract Manufacturing,
Machining, Manufacturing
PRODUCTS / SERVICES
• Additive Manufacturing/Industrial
3D Printing
• Laser Marking
• Machine Tool Sales Chip Cutting

FOUNDED 1982 **MPMA** 12/31/84
EMPL 33
IND SERVED Aerospace,
Agricultural, Ammunition,
Automation, Automotive, Aviation,
Boating, Contract Manufacturing,
Machining, Manufacturing
PRODUCTS / SERVICES
• Additive Manufacturing/Industrial
3D Printing
• Laser Marking
• Machine Tool Sales Chip Cutting

FOUNDED 1982 **MPMA** 12/31/84
EMPL 33
IND SERVED Aerospace,
Agricultural, Ammunition,
Automation, Automotive, Aviation,
Boating, Contract Manufacturing,
Machining, Manufacturing
PRODUCTS / SERVICES
• Additive Manufacturing/Industrial
3D Printing
• Laser Marking
• Machine Tool Sales Chip Cutting

FOUNDED 1982 **MPMA** 12/31/84
EMPL 33
IND SERVED Aerospace,
Agricultural, Ammunition,
Automation, Automotive, Aviation,
Boating, Contract Manufacturing,
Machining, Manufacturing
PRODUCTS / SERVICES
• Additive Manufacturing/Industrial
3D Printing
• Laser Marking
• Machine Tool Sales Chip Cutting

FOUNDED 1982 **MPMA** 12/31/84
EMPL 33
IND SERVED Aerospace,
Agricultural, Ammunition,
Automation, Automotive, Aviation,
Boating, Contract Manufacturing,
Machining, Manufacturing
PRODUCTS / SERVICES
• Additive Manufacturing/Industrial
3D Printing
• Laser Marking
• Machine Tool Sales Chip Cutting

FOUNDED 1982 **MPMA** 12/31/84
EMPL 33
IND SERVED Aerospace,
Agricultural, Ammunition,
Automation, Automotive, Aviation,
Boating, Contract Manufacturing,
Machining, Manufacturing
PRODUCTS / SERVICES
• Additive Manufacturing/Industrial
3D Printing
• Laser Marking
• Machine Tool Sales Chip Cutting

FOUNDED 1982 **MPMA** 12/31/84
EMPL 33
IND SERVED Aerospace,
Agricultural, Ammunition,
Automation, Automotive, Aviation,
Boating, Contract Manufacturing,
Machining, Manufacturing
PRODUCTS / SERVICES
• Additive Manufacturing/Industrial
3D Printing
• Laser Marking
• Machine Tool Sales Chip Cutting

FOUNDED 1982 **MPMA** 12/31/84
EMPL 33
IND SERVED Aerospace,
Agricultural, Ammunition,
Automation, Automotive, Aviation,
Boating, Contract Manufacturing,
Machining, Manufacturing
PRODUCTS / SERVICES
• Additive Manufacturing/Industrial
3D Printing
• Laser Marking
• Machine Tool Sales Chip Cutting

FOUNDED 1982 **MPMA**

Agricultural, Automotive, Construction, Contract Manufacturing, Fabricating, Food, HVAC, Medical, OEM's

CERTIFICATIONS AS 9100D

PRODUCTS / SERVICES

- Assembly
- Fabricating
- Machining - Large Capacity
- Production Machining
- Stamping
- Tool and Die
- Water Jet Cutting
- Workholding

MultiSource Mfg, LLC

Luis Gomez
10310 Bren Road E.
Minnetonka, MN 55343
multisourcemfg.com
lgomez@multisourcemfg.com

PHONE (952) 456-5500

FOUNDED 1968 **MPMA** 12/12/86
EMPL 310 **SQ FT** 192,000

IND SERVED Aerospace, Data Storage, Defense, Fabricating, Food, Industrial, Military, Pharmaceutical, Precision Manufacturing, Semi Conductor

PRODUCTS / SERVICES

- Milling
- Turning
- Turning - Swiss

New Ulm Precision Tool, Inc.

Paul Huseby
2217 South Broadway
New Ulm, MN 56073
nuprecisiontool.com
phuseby@nuprecisiontool.com

PHONE (507) 610-7770

FOUNDED 1974 **MPMA** 01/01/76
EMPL 21

IND SERVED Electrical, Manufacturing, Medical

PRODUCTS / SERVICES

- Milling
- Prototypes/Short Run
- Tool and Die

Newmark

Lucas Long
7108 1st Ave. S
Richfield, MN 55423
nmrk.com
lucas.long@nmrk.com

PHONE (612) 250-7372

FOUNDED 2029 **MPMA** 01/11/22
EMPL 2

IND SERVED All

PRODUCTS / SERVICES

- Real Estate

Nordic Components, Inc.

Jarmo Kumpulainen
79 E 8th St
Waconia, MN 55387
nordiccomp.com
jarmo@nordiccomp.com

PHONE (952) 442-8914

FOUNDED 2005 **MPMA** 10/30/13
EMPL 10 **SQ FT** 40,000

IND SERVED Aerospace, Aviation, Contract Manufacturing, Defense, Marine, Military

CERTIFICATIONS ISO 9001; ISO 2015

PRODUCTS / SERVICES

- Milling
- Production Machining
- Turning

Northland Screw Products, Inc.

Rob Martinson
P.O. Box 429
St. Francis, MN 55070
northlandscrewproducts.com
rob@northlandscrewproducts.com

PHONE (763) 753-3628

FOUNDED 1977 **MPMA** 01/01/81
EMPL 30 **SQ FT** 30,300

IND SERVED All

PRODUCTS / SERVICES

- Milling
- Production Machining
- Screw Machining
- Turning
- Turning - Swiss

Northwest Machine

Joel Lundin
20851 Commerce Blvd, Suite 3
Rogers, MN 55374
nwmtec.com

PHONE (763) 493-3660

FOUNDED 1983 **MPMA** 03/24/87
EMPL 30 **SQ FT** 23,000

IND SERVED Distribution

PRODUCTS / SERVICES

- Machine Tool Sales Chip Cutting
- Metrology
- Robotics/Automation

NTM, Inc.

Barb Dorumsgaard
140 NE Liberty St.
Minneapolis, MN 55432
ntmnc.com
barbd@ntmnc.com

PHONE (763) 780-1420

FOUNDED 1976 **MPMA** 06/15/18
EMPL 25 **SQ FT** 25,000

IND SERVED Defense, Distribution, Machine Job Shop, Machining, Metalworking, Precision Manufacturing

CERTIFICATIONS ISO 9001; ISO 2015

PRODUCTS / SERVICES

- Cutting Tools Manufacturer
- Precision Grinding
- Production Machining

OECS - OSHA + Environmental Compliance Systems

Melissa Olheiser
1000 Sheldar Parkway, Suite 140
St. Louis Park, MN 55426
oecscomply.com
melissa@oecscomply.com

PHONE (763) 417-9599

FOUNDED 1993 **MPMA** 2017
EMPL 28

PRODUCTS / SERVICES

- Construction
- Safety Consultants

Olympic Steel, Inc.

Tom Sacco
625 Xenium Ln N
Plymouth, MN 55441
olysteel.com
tsacco@olysteel.com

PHONE (763) 544-7100

FOUNDED 1954 **MPMA** 03/09/04
EMPL 130 **SQ FT** 346,000

IND SERVED Manufacturing

PRODUCTS / SERVICES

- Laser Cutting
- Machining - Large Capacity
- Metal Service Center

Omnitool, Inc.

Walter Waffensmith
3500 48th Ave. N.
Brooklyn Center, MN 55429
omnitool.com

walter@omnitool.com

PHONE (763) 535-4240

FOUNDED 1978 **MPMA** 11/01/80
EMPL 35 **SQ FT** 27,000

PRODUCTS / SERVICES

- Mold Making
- Tool and Die

On Time Delivery Service, Inc.

Tim Holtan
1050 W. 94th St.
Bloomington, MN 55420
bontime.com
tholtan@bontime.com

PHONE (952) 884-4060

FOUNDED 1986 **MPMA** 10/02/09
EMPL 15 **SQ FT** 7,000

IND SERVED Engineering, Manufacturing, Medical, Printing

PRODUCTS / SERVICES

- Shipping & Delivery

OpOne Group

Tyler Stilson
1820 Willow St
Mankato, MN 56001
op1group.com
tyler@operosemfg.com

PHONE (303) 249-7842

MPMA 2023
EMPL 50

IND SERVED Energy, Environmental, Marine, Medical Devices, OEM's, Semi Conductor, Telecommunication

CERTIFICATIONS ISO 9001; ISO 2015

PRODUCTS / SERVICES

- Electrical Discharge Machining
- Machining - Large Capacity
- Milling
- Precision Grinding
- Turning

Orca Machine Tools, Inc.

Theron Horn
7901 Beech St. NE, 203
Fridley, MN 55432
orca-inc.com
thorn@orca-inc.com

PHONE (763) 494-9825

FOUNDED 1992 **MPMA** 01/21/14
EMPL 4 **SQ FT** 14,000

IND SERVED Aerospace, Ammunition, Defense, Fabricating, Machine Job Shop, Machining, Metalworking, Oil & Gas, Stamping, Tool & Die

CERTIFICATIONS Certified AMEA Machine Tool Appraiser

PRODUCTS / SERVICES

- Electrical Discharge Machining
- Machine Tool Sales Chip Cutting
- Machine Tool Sales (Used)
- Machining - Large Capacity
- Tool and Die

PackEdge Co

John Hanson
3003 North Pacific Street
Minneapolis, MN 55411
packedgeco.com
jhanson@packedgeco.com

PHONE (612) 607-5700

FOUNDED 1947 **MPMA** 2023
EMPL 50

IND SERVED Manufacturing

PRODUCTS / SERVICES

- Automation Integration
- Material Handling

Panther Precision Machine, Inc.

Tom Olson
6640 Sunwood Dr NW
Ramsey, MN 55303
pantherprecision.com
tolson@pantherprecision.com

PHONE (763) 586-9651

FOUNDED 1998 **MPMA** 05/05/98
EMPL 30 **SQ FT** 50,000

IND SERVED Food, Medical

PRODUCTS / SERVICES

- Machining - Large Capacity
- Turning
- Welding

Paperless Parts

Suzy Leamon
205 Portland Street, Floor 6
Boston, MA 2114
paperlessparts.com
suzy.leamon@paperlessparts.com

PHONE (617) 475-0161

FOUNDED 2017 **MPMA** 2024
EMPL 250

IND SERVED Manufacturing

PRODUCTS / SERVICES

- Computer Software & Training

Pequot Tool & Manufacturing, Inc.

Michael Goerges
P.O. Box 580
Pequot Lakes, MN 56472
pequottool.com
mgoerges@pequottool.com

PHONE (218) 568-8069

FOUNDED 1981 **MPMA** 01/27/93
EMPL 170 **SQ FT** 95,000

IND SERVED Aerospace, Computer, Defense, Fabricating, Home, Hydraulics, Machine Job Shop, Machining, Medical, Motion Control, Semi Conductor

PRODUCTS / SERVICES

- Milling
- Sheet Metal Fabrication
- Turning

Permac Industries

Darlene Miller
14401 Ewing Ave. S
Burnsville, MN 55306
permacindustries.com
dmiller@permacindustries.com

PHONE (952) 894-7231

FOUNDED 1966 **MPMA** 09/02/03
EMPL 18 **SQ FT** 35,000

IND SERVED Aerospace, Defense, Food, Transportation

CERTIFICATIONS AS 9100; WBENC

PRODUCTS / SERVICES

- Milling
- Turning
- Turning - Swiss

Pine Technical College

Joe Mulford
900 4th St SE
Pine City, MN 55063
pine.edu
joe.mulford@pine.edu

PHONE (320) 629-5100

FOUNDED 1965 **MPMA** 02/01/08

IND SERVED Education

PRODUCTS / SERVICES

- Technical Colleges/Education

Plastic Products Company Inc. (PPC)

Rob Zemke
13116 Lake Blvd.
Lindstrom, MN 55045
plasticproductsco.com
robertzemke@plasticproductsco.com

PHONE (651) 257-7879

FOUNDED 1957 **MPMA** 04/06/20
EMPL 260 **SQ FT** 372,000

IND SERVED Appliance, Automation, Electronics

PRODUCTS / SERVICES

- Assembly
- Plastic Injection Molding

Plastics International

Paul Carter
7600 Anagram Drive
Eden Prairie, MN 55344
plasticsintl.com
paulc@plasticsintl.com

PHONE (952) 934-2303

FOUNDED 1985 **MPMA** 12/05/89
EMPL 15 **SQ FT** 40,000

IND SERVED Aerospace, Automotive, Medical, Manufacturing

PRODUCTS / SERVICES

- Plastic Sheet Rod & Tube
- Sawing

Powder Coating Technologies, Inc.

Chad Fiheld
14920 28th Ave N
Minneapolis, MN 55447
powdercoatingtech.com
chad@powdercoatingtech.com

PHONE (763) 559-4779

FOUNDED 1992 **MPMA** 2024
EMPL 12

IND SERVED Agricultural, Automation, Industrial, Machining, Manufacturing, Precision Manufacturing

PRODUCTS / SERVICES

- Metal Finishing
- Powder Coating

Precise Products Corporation

Jason Wennberg
1201 Plymouth Ave. N
Minneapolis, MN 55411
preciseproducts.com
jwennberg@preciseproducts.com

PHONE (612) 522-2141

FOUNDED 1982 **MPMA** 11/01/60
EMPL 100 **SQ FT** 50,000

IND SERVED Aerospace, Industrial, Machining

PRODUCTS / SERVICES

- Milling
- Production Machining
- Turning

Precision Coatings, Inc.

Linda Grundtner
2313 Wycliff St
St. Paul, MN 55114
precisioncoatings.com
sales@precisioncoatings.com

PHONE (651) 641-0878

FOUNDED 1988 **MPMA** 03/05/13
EMPL 19 **SQ FT** 34,000

IND SERVED Agricultural, Automation, Industrial, Machining, Manufacturing, Precision Manufacturing

CERTIFICATIONS ISO 9001; ISO 2015

PRODUCTS / SERVICES

- Metal Finishing
- Plating/Coatings
- Precision Grinding

MEMBER DIRECTORY

Precision Repair & Calibration Inc.

Paula Durand
10370 Flanders St NE
Blaine, MN 55449
precisionmn.com
paula@precisionmn.com
PHONE (763) 200-1530
FOUNDED 1982 **MPMA** 11/16/95
EMPL 25 **SQ FT** 14,000
IND SERVED Aerospace,
Aviation, Electronics, Pharmaceutical,
Precision Manufacturing
CERTIFICATIONS ISO; Other
PRODUCTS / SERVICES
• Milling
• Plastic Injection Molding
• Production Machining

Precision Tool Technologies, Inc.

Jim Goerges
PO Box 763, 924 Wright Street
Brainerd, MN 56401
precisiontooltech.com
jim@precisiontooltech.com
PHONE (800) 450-8665
FOUNDED 1993 **MPMA** 08/02/05
EMPL 27 **SQ FT** 18,000
IND SERVED Medical, Optical
CERTIFICATIONS ISO 2015; ISO 9001
PRODUCTS / SERVICES
• Milling
• Plastic Injection Molding
• Production Machining

Pride Solutions

Jack Daggett
120 Eastgate Drive, SE
Hutchinson, MN 55350
pridesolutions.us
jdaggett@pridesolutions.com
PHONE (320) 587-0760
FOUNDED 2002 **MPMA** 09/18/18
EMPL 30 **SQ FT** 25,000
PRODUCTS / SERVICES
• Assembly
• Fabricating
• Plastic Sheet Rod & Tube

Production Engineering Corp.

Mike Albers
3515 Marshall Street NE
Minneapolis, MN 55418
productionengineeringcorp.com
mhalbers@pecorp.net
PHONE (612) 788-9123
FOUNDED 1957 **MPMA** 11/01/72
EMPL 50 **SQ FT** 75,000
IND SERVED Aerospace,
Computer, Military
PRODUCTS / SERVICES
• Fabricating
• Machining - Large Capacity
• Welding

Production Tool & Manufacturing, Inc.

Mark Boesch
2828 Vicksburg Lane N
Plymouth, MN 55447
protoolus.com
markb@protoolus.com
PHONE (763) 559-5746
FOUNDED 1979 **MPMA** 03/01/86
EMPL 20 **SQ FT** 15,000
IND SERVED Agricultural,
Automotive, Defense, Food, Medical,
Telecommunication
CERTIFICATIONS ISO 2015; ISO

PRODUCTS / SERVICES

- Milling
- Turning
- Turning - Swiss

Productivity Inc.

Greg Buck
15150 25th Ave. North
Minneapolis, MN 55447
productivity.com
gbuck@productivity.com
PHONE (763) 476-8600
FOUNDED 1968 **MPMA** 11/01/69
EMPL 120 **SQ FT** 35,000
IND SERVED Manufacturing,
Machining
PRODUCTS / SERVICES
• Cutting Tools Distributor
• Machine Tool Sales Chip Cutting
• Machine Tool Sales Fabrication
• Robotics/Automation
• Tool Repair/Service

Productivity Quality Inc/

Hannah Anderson
15150 25th Ave North, Suite 200
Plymouth, MN 55447
gagesite.com
hannah.anderson@pqj.net
PHONE (763) 249-8131
FOUNDED 1993 **MPMA** 01/10/06
EMPL 90 **SQ FT** 25,000
IND SERVED Engineering,
Industrial Equipment, Machining,
Manufacturing, Metrology, Precision
Manufacturing
PRODUCTS / SERVICES
• Calibration - Test & Inspection
• Gauging
• Metrology

Advanced Inspection Services LLC

Hannah Anderson
15150 25th Ave North, Suite 200
Plymouth, MN 55447
gagesite.com
hannah.anderson@pqj.net
PHONE (763) 249-8131
FOUNDED 1993 **MPMA** 01/10/06
EMPL 90 **SQ FT** 25,000
IND SERVED Engineering,
Industrial Equipment, Machining,
Manufacturing, Metrology, Precision
Manufacturing
PRODUCTS / SERVICES
• Calibration - Test & Inspection
• Gauging
• Metrology

Professional Instruments Company, Inc.

Greg Vogel
7800 Powell Road
Hopkins, MN 55343
airbearings.com
gvogel@airbearings.com
PHONE (952) 933-1222
FOUNDED 1946 **MPMA** 10/01/58
EMPL 43 **SQ FT** 80,000
IND SERVED Computer,
Engineering, Industrial, Machine Job
Shop, Metrology, Optical, Precision
Manufacturing, Semi Conductor,
Technology, Telecommunication, Tool
& Die
PRODUCTS / SERVICES
• Precision Grinding
• Prototypes/Short Run
• Tool and Die

ProtoTek Engineering, Inc.

Dave Meyer
5465 Carmel Lane
Carver, MN 55315
prototek-engineering.com
david@prototek-engineering.com
PHONE (952) 361-5598
FOUNDED 1993 **MPMA** 11/26/93
EMPL 5 **SQ FT** 3,000
IND SERVED All
CERTIFICATIONS Mastercam
Certified
PRODUCTS / SERVICES
• Computer Software & Training
• Engineering & Design Services

QC Training Services, Inc.

Anish Shah
3800 American Blvd., W. Suite 1500
Minneapolis, MN 55431
qctraininginc.com
ashah@qctraininginc.com
PHONE (952) 746-5725
FOUNDED 2015 **MPMA** 06/03/20
EMPL 1
IND SERVED All
PRODUCTS / SERVICES
• Engineering & Design Services
• ISO Certification Services
• Technical Colleges/Education

QDP Technologies

Troy Holien
6459 144th Ave NW Ste B
Ramsey, MN 55303
qdpdtech.com
troy.holien@qdpdtech.com
PHONE (763) 712-1626
FOUNDED 2005 **MPMA** 08/07/07
EMPL 15 **SQ FT** 4,800
PRODUCTS / SERVICES
• Milling
• Sawing
• Turning

Quality & Service Machine Tool Company

Bill Lidfors
7300 Oxford St
St Louis Park, MN 55426
qandsmachinetool.com
bill@qandsmachinetool.com
PHONE (952) 935-8616
FOUNDED 1963 **MPMA** 1989
EMPL 10 **SQ FT** 7,500
IND SERVED Manufacturing,
Machining
PRODUCTS / SERVICES
• Abrasives
• Coolants/Lubricants
• Cutting Tools Distributor

Range Tool Company

Michael Peterson
202 North Broadway
Gilbert, MN 55741
rangetool.com
mike@rangetool.com
PHONE (218) 410-9201
FOUNDED 2010 **MPMA** 2023
EMPL 9
IND SERVED Contract
Manufacturing, Defense, Industrial,
Marine, Mining, OEM's
PRODUCTS / SERVICES
• Machining - Large Capacity
• Production Machining
• Programming

Redpath and Company

Angela Wilke
55 5th Street East, Suite 1400
St. Paul, MN 55101
redpathcpas.com
awilke@redpathcpas.com
PHONE (651) 478-1524
FOUNDED 1971 **MPMA** 08/05/10
EMPL 150
IND SERVED All
PRODUCTS / SERVICES
• Accounting
• Mergers & Acquisitions
• R & D Tax Credit Consultants
Replenex, Inc.
Matt Cohen
9815 W. 74th St.
Eden Prairie, MN 55344
replenex.com
matt.cohen@replenex.com
PHONE (952) 941-9150

FOUNDED 1947 **MPMA** 11/01/67
EMPL 47 **SQ FT** 25,000
IND SERVED Agricultural,
Automotive, Food, Manufacturing,
Medical, Precision Manufacturing,
Transportation
PRODUCTS / SERVICES
• Abrasives
• Cutting Tools Distributor
• Safety Equipment

Ridgewater College

Matt Feuerborn
2 Century Ave SE
Hutchinson, MN 55350
ridgewater.edu
matthew.feuerborn@ridgewater.edu
PHONE (320) 234-8509
FOUNDED 1961 **MPMA** 10/16/12
EMPL 250
IND SERVED Manufacturing,
Machining
PRODUCTS / SERVICES
• Technical Colleges/Education

rms

Justin Nord
8600 Evergreen Blvd.
Coon Rapids, MN 55433
rmsmachining.com
jnord@machine.com
PHONE (763) 786-1520
FOUNDED 1967 **MPMA** 12/27/04
EMPL 1150 **SQ FT** 355,000
IND SERVED Contract
Manufacturing, Engineering, Machine
Job Shop, Machining, Medical
PRODUCTS / SERVICES
• Micro Machining
• Milling
• Turning - Swiss

Salient, Inc.

Jim Schaeffer
135 Monroe Street SE, Suite 16; PO
BOX 151
Hutchinson, MN 55350
salientincorporated.com
jim@salientincorporated.com
PHONE (320) 455-8021
FOUNDED 2018 **MPMA** 11/18/22
IND SERVED Aerospace,
Electronics, Medical, Precision
Manufacturing
PRODUCTS / SERVICES
• Cutting Tools Manufacturer
• Laser Marking
• Precision Grinding

Scale Bank Equipment Finance

Taylor Lagieski
7600 Parklawn Avenue, Suite 150
Edina, MN 55435
scale.bank
taylor.lagieski@scale.bank
PHONE (952) 830-7296
FOUNDED 1970 **MPMA** 2018
EMPL 45
IND SERVED Automation,
Construction, Contract
Manufacturing, Distribution,
Fabricating, Manufacturing
PRODUCTS / SERVICES
• Banking/Financing
• Capital Equipment Financing

SCHUNK, Inc.

Matt Steele
211 Kitty Hawk Dr
Morrisville, NC 27560
us.schunk.com
matt.steele@us.schunk.com

PHONE (800) 772-4865
FOUNDED 1992 **MPMA** 06/03/08
EMPL 1 **SQ FT** 30,000
IND SERVED Manufacturing
PRODUCTS / SERVICES
• Cutting Tools Distributor
• Robotics/Automation
• Workholding

SDK CPAs

Brandon Reinschmidt
100 Washington Avenue South,
Suite 1600
Minneapolis, MN 55401
sdcpa.com
breinschmidt@sdcpa.com
PHONE (612) 332-5500
FOUNDED 1990 **MPMA** 04/18/16
EMPL 60
IND SERVED All
PRODUCTS / SERVICES
• Accounting
• Retirement Services/Succession
Planning

Silvertip Associates, Inc.

Dale Peterson
10800 Mankato Street NE
Blaine, MN 55449
silvertipgrinding.com
silvertipassoc@aol.com
PHONE (763) 717-0773
FOUNDED 1990 **MPMA** 01/03/11
EMPL 5 **SQ FT** 10,000
PRODUCTS / SERVICES
• Precision Grinding

Smith Foundry Company

Neil Ahlstrom
1855 E. 28th St.
Minneapolis, MN 55407
smithfoundry.com
ahlstrom_neil@smithfoundry.com
PHONE (612) 729-9395
FOUNDED 1923 **MPMA** 07/28/04
EMPL 50 **SQ FT** 60,000
PRODUCTS / SERVICES
• Foundries and Casting
• Prototypes/Short Run

Sodick, Inc.

Joel Manns
601 Commerce Drive
Schaumburg, IL 60173
sodick.com
jmanns@sodick.com
PHONE (651) 319-7259
FOUNDED 1976 **MPMA** 06/07/11
EMPL 2
IND SERVED Aerospace,
Automotive, Construction, Energy,
Machine Job Shop, Medical
PRODUCTS / SERVICES
• Additive Manufacturing/Industrial
• 3D Printing
• Electrical Discharge Machining
• Milling

Source Machine Alliance

Brian Bester
7421 Commerce Lane
Fridley, MN 55432
sourcemachinealliance.com
charlie@sourcemachinesales.com
PHONE (763) 553-1711
FOUNDED 2023 **MPMA** 2023
EMPL 15
IND SERVED Fabricating,
Machining, Manufacturing,
Transportation
PRODUCTS / SERVICES
• Fabricating
• Machine Tool Sales Fabrication
• Machine Tool Sales (Used)

MEMBER DIRECTORY

South Central College

Susan Jameson
1920 Lee Blvd.
North Mankato, MN 56003
southcentral.edu
susan.jameson@southcentral.edu
PHONE (507) 389-7200
FOUNDED 1935 **MPMA** 05/04/10
EMPL 250
IND SERVED Education
PRODUCTS / SERVICES
• Technical Colleges/Education

St. Cloud Technical & Community College

Aaron Barker
1540 Northway Drive
St. Cloud, MN 56303
sctcc.edu
abarker@sctcc.edu
PHONE (320) 308-5353
FOUNDED 1948 **MPMA** 02/01/05
IND SERVED Education
PRODUCTS / SERVICES
• Technical Colleges/Education

Stampings of MN, Inc.

Andrea Miller
21980 Hamburg Ave
Lakeville, MN 55044
stampingsofminnesota.com
amiller@stampingsofminnesota.com
PHONE (952) 469-8641
FOUNDED 1963 **MPMA** 2023
EMPL 46
PRODUCTS / SERVICES
• Laser Cutting
• Sheet Metal Fabrication
• Tool and Die

Steinwall, Inc.

Tom Smolenski
1759 116th Ave NW
Coon Rapids, MN 55448
steinwall.com
tsmolenski@steinwall.com
PHONE (763) 767-7080
FOUNDED 1965 **MPMA** 01/31/21
EMPL 100 **SQ FT** 250,000
IND SERVED Agricultural,
Appliance, Energy, Home, Plastic
Injection, Plastics
CERTIFICATIONS ISO 9001; ISO
2015
PRODUCTS / SERVICES
• Assembly
• Engineering & Design Services
• Plastic Injection Molding

FOUNDED 1965 **MPMA** 01/31/21
EMPL 100 **SQ FT** 250,000
IND SERVED Agricultural,
Appliance, Energy, Home, Plastic
Injection, Plastics
CERTIFICATIONS ISO 9001; ISO
2015
PRODUCTS / SERVICES
• Assembly
• Engineering & Design Services
• Plastic Injection Molding

Stone Machinery, Inc.

Tom Drazkowski
551 Phalen Blvd
St. Paul, MN 55130
stonemachinery.com
info@stonemachinery.com
PHONE (651) 778-8887
FOUNDED 1927 **MPMA** 10/01/56
EMPL 14 **SQ FT** 6,000
IND SERVED Aerospace,
Agricultural, Automotive,
Manufacturing, Medical
PRODUCTS / SERVICES
• Calibration - Test & Inspection
• Machine Tool Sales Chip Cutting
• Workholding

Stratasy

Adam Pawloski
9600 W 76th St
Eden Prairie, MN 55344
stratasy.com

adam.pawloski@stratasy.com
PHONE (952) 294-3443
FOUNDED 1988 **MPMA** 10/16/17
EMPL 2400
IND SERVED Aerospace,
Automotive, Defense, Industrial
Equipment, Plastics, Prototype
PRODUCTS / SERVICES
• Additive Manufacturing/Industrial
3D Printing
• Machine Tool Manufacturer (OEM)
• Prototypes/Short Run

Strother communications Group

Patricia Henning Strother
222 S 9 St, Fl 4100
Minneapolis, MN 55402
scgpr.com
patriciah@scgpr.com
PHONE (612) 288-2401
FOUNDED 1992 **MPMA** 2023
EMPL 11
IND SERVED Contract
Manufacturing, Machine Job Shop,
Metalworking, Fabricating, HVAC,
Agricultural
PRODUCTS / SERVICES
• Marketing Services

SUCCESS Computer Consulting

Taylor Goetz
6130 Golden Hills Drive
Golden Valley, MN 55416
successcomputerconsulting.com
marketing@scnet.com
PHONE (763) 593-3000
FOUNDED 1992 **MPMA** 12/14/21
EMPL 100
IND SERVED Engineering,
Manufacturing, Non Profit, Precision
Manufacturing, Professional Services
PRODUCTS / SERVICES
• Automation Integration
• Computer Software & Training
• Expense Reduction Advisors

FOUNDED 1992 **MPMA** 12/14/21
EMPL 100
IND SERVED Engineering,
Manufacturing, Non Profit, Precision
Manufacturing, Professional Services
PRODUCTS / SERVICES
• Automation Integration
• Computer Software & Training
• Expense Reduction Advisors

Sunbelt Business Advisors

Kevin Szozda
1300 Godward St NE, 6000
Minneapolis, MN 55413
sunbeltmidwest.com
kszoza@sunbeltmidwest.com
PHONE (612) 709-3446
FOUNDED 1978 **MPMA** 2022
EMPL 15
IND SERVED Distribution,
Electrical, Gear Manufacturing,
Manufacturing, Packaging, Precision
Manufacturing
PRODUCTS / SERVICES
• Mergers & Acquisitions

FOUNDED 1978 **MPMA** 2022
EMPL 15
IND SERVED Distribution,
Electrical, Gear Manufacturing,
Manufacturing, Packaging, Precision
Manufacturing
PRODUCTS / SERVICES
• Mergers & Acquisitions

Superior Aerospace

Bob Koss
7835 Main Street
Fridley, MN 55432
superioraerospace.net
bobkoss@superioraerospace.net
PHONE (763) 786-0100
FOUNDED 1970 **MPMA** 03/01/85
EMPL 44 **SQ FT** 27,000
IND SERVED Aerospace,
Aviation, Contract Manufacturing,
Defense, Machine Job Shop,
Machining, Manufacturing, Precision
Manufacturing
PRODUCTS / SERVICES
• Milling
• Production Machining
• Turning

T.D. Wright, Inc. David

McEachern
292 Walnut St
St. Paul, MN 55102
magneticcylinders.com
sales@tdwinc.com
PHONE (651) 227-1302
MPMA 07/08/98
EMPL 9 **SQ FT** 15,000
IND SERVED Packaging,
Printing
PRODUCTS / SERVICES
• Tool and Die

Taylor Machine, Inc.

Alan Hoffman
4520 103rd Ct. NE
Circle Pines, MN 55014
tmicnc.com
ahoffman@tmicnc.com
PHONE (763) 786-5949
FOUNDED 1987 **MPMA** 01/10/94
EMPL 28 **SQ FT** 22,000
IND SERVED Aerospace,
Agricultural, Defense, Medical,
Military, Oil & Gas
PRODUCTS / SERVICES
• Milling
• Turning - Swiss

FOUNDED 1987 **MPMA** 01/10/94
EMPL 28 **SQ FT** 22,000
IND SERVED Aerospace,
Agricultural, Defense, Medical,
Military, Oil & Gas
PRODUCTS / SERVICES
• Milling
• Turning - Swiss

TEAM Industries

Carri Pickett
105 Park Ave. NW
Bagley, MN 56621
team-ind.com
carripickett@team-ind.com
PHONE (218) 694-3550
FOUNDED 1967 **MPMA** 12/05/00
EMPL 1050
IND SERVED Automotive,
Construction
PRODUCTS / SERVICES
• Assembly
• Machining - Large Capacity
• Production Machining

Teamvantage Molding LLC

Thomas Caron
20697 Fenway Ave. N
Forest Lake, MN 55025
teamvantage.com
sales@teamvantage.com
PHONE (651) 464-3900
FOUNDED 1972 **MPMA** 06/28/13
EMPL 250 **SQ FT** 111,000
IND SERVED Aerospace,
Defense, Electronics, Industrial
PRODUCTS / SERVICES
• Assembly
• Mold Making
• Plastic Injection Molding

The Lindgren Group-Avtec & Nico

Ken Barnes
2929 1st Ave. S
Minneapolis, MN 55408
thelindgrengroup.com
kbarnes@thelindgrengroup.com
PHONE (612) 822-2185
FOUNDED 1971 **MPMA** 07/25/18
EMPL 200 **SQ FT** 200,000
IND SERVED Aerospace,
Agricultural, Ammunition, Defense,
Electronics, Fluid Power, Hydraulics,
Medical, Motion Control, Plating/
Coatings, Stamping
CERTIFICATIONS Nadcap; ISO
PRODUCTS / SERVICES
• Metal Finishing
• Plating/Coatings

The Specialty Manufacturing Company

Kevin Frane
5858 Centerville Rd
St. Paul, MN 55127
specialtyvmfg.com
kfrane@specialtyvmfg.com
PHONE (651) 762-4464
FOUNDED 1900 **MPMA** 06/04/13
EMPL 165 **SQ FT** 230,000
IND SERVED Agricultural,
Automotive, Industrial Equipment,
Medical, Military
PRODUCTS / SERVICES
• Production Machining
• Stamping
• Turning - Swiss

Timesavers LLC

Jim Heard
11123 89th Ave. N
Maple Grove, MN 55369
timesaversinc.com
jheard@timesaversinc.com
PHONE (763) 488-6600
FOUNDED 1946 **MPMA** 10/30/14
EMPL 68 **SQ FT** 82,000
IND SERVED Manufacturing
PRODUCTS / SERVICES
• Abrasives

The Toro Company

Eric Taylor
4800 Valley Industrial Blvd.
Shakopee, MN 55379
toro.com
eric.taylor@toro.com
PHONE (952) 937-3340
FOUNDED 1914 **MPMA** 08/03/20
EMPL 255
IND SERVED Golf
PRODUCTS / SERVICES
• Machining - Large Capacity
• Precision Grinding
• Stamping

True North Precision

Steve Swain
1150 McKinley St
Anoka, MN 55303
truenorthprecision.com
sswain@tnprecision.com
PHONE (763) 572-0662
FOUNDED 2014 **MPMA** 10/30/14
EMPL 12 **SQ FT** 10,000
IND SERVED Aerospace,
Agricultural, Automotive, Aviation,
Contract Manufacturing, Hydraulics,
Industrial, Machine Job Shop,
Machining, OEM's
PRODUCTS / SERVICES
• Milling
• Screw Machining
• Turning - Swiss

Twin City EDM & Manufacturing, Inc.

Steve Lindell
7940 Ranchers Road NE
Fridley, MN 55432
twincityedm.com
info@twincityedm.com
PHONE (763) 783-7808
FOUNDED 1959 **MPMA** 10/01/59
EMPL 73 **SQ FT** 40,000
IND SERVED Aerospace,
Contract Manufacturing, Defense,
Gear Manufacturing, Machine Job
Shop, Machining, Manufacturing,
Medical, Optical, Precision
Manufacturing

CERTIFICATIONS ISO 13485; ISO
2016

PRODUCTS / SERVICES

• Electrical Discharge Machining
• Machine Tool Manufacturer (OEM)
• Milling
Turning - Swiss

Twin City Plating Company

Ben Minger
641 Hoover St. NE
Minneapolis, MN 55413
twincityplating.com
ben@twincityplating.com
PHONE (612) 331-8895
FOUNDED 1932 **MPMA** 08/17/93
EMPL 18 **SQ FT** 21,000
IND SERVED Plating/Coatings
PRODUCTS / SERVICES
• Metal Finishing
• Plating/Coatings

Twin City Staffing

Mike Miner
7091 Highway 65, 4b
Fridley, MN 55432
twincitystaffing.com
mike@twincitystaffing.com
PHONE (612) 462-2688
FOUNDED 2003 **MPMA** 02/22/17
EMPL 1000
IND SERVED All
PRODUCTS / SERVICES
• Accounting
• Employee Benefits
• Staffing

United Standards Lab, Inc.

James Dolezal
8148 Pillsbury Ave. S
Bloomington, MN 55420
unitedstandardslab.com
jim@unitedstandardslab.com
PHONE (612) 823-2616
FOUNDED 1965 **MPMA** 12/01/65
EMPL 6 **SQ FT** 4,000
IND SERVED Aerospace,
Automotive, Medical
PRODUCTS / SERVICES
• Calibration - Test & Inspection
• Gauging
• Metrology

VisionOne High Performance Group, Inc.

Nicole Shearer
3512 E Burnsville Pkwy
Burnsville, MN 55337
visiononeperformance.com
nicole@visiononeperformance.com
PHONE (952) 210-9293
FOUNDED 2004 **MPMA** 2019
EMPL 3
IND SERVED All
PRODUCTS / SERVICES
• Economic Development
• Retirement Services/Succession
Planning
• Technical Colleges/Education

Von Ruden Manufacturing, Inc.

Brandon Anderson
1008 1st Street NE
Buffalo, MN 55313
vonruden.com
brandon@vonruden.com
PHONE (763) 682-3122
FOUNDED 1989 **MPMA** 01/08/08
EMPL 38 **SQ FT** 50,000
IND SERVED Contract
Manufacturing, Defense, Fluid Power,

Hydraulics, Manufacturing, Precision Manufacturing

PRODUCTS / SERVICES

- Milling
- Production Machining
- Turning

Waypost Advisors

Rob Kress
16526 W 78th Street, Suite 335
Eden Prairie, MN 55346
waypostadvisors.com
robk@waypostadvisors.com
PHONE (952) 222-8178
FOUNDED 2020 **MPMA** 2023
EMPL 5

IND SERVED Contract
Manufacturing, Distribution,
Manufacturing, OEM's, Precision
Manufacturing

PRODUCTS / SERVICES

- Expense Reduction Advisors

Western Spring Manufacturing

Alex Altstatt
13153 Fenway Blvd. N
Hugo, MN 55038
westernspring.com
alex@westernspring.com
PHONE (651) 224-1721
FOUNDED 1942 **MPMA** 06/03/09
EMPL 25 **SQ FT** 45,000
IND SERVED Aerospace,
Defense, Energy, Fluid Power,
Medical, Plastics
PRODUCTS / SERVICES
• Coil Springs/Wire Forms
• Prototypes/Short Run
• Stamping

Wilson Tool International

Chris Lawless
12912 Farnham Ave N
White Bear Lake, MN 55110
wilsontool.com
chris.lawless@wilsontool.com
PHONE (651) 286-6000

FOUNDED 1966 **MPMA** 05/01/01
EMPL 366 **SQ FT** 350,000

IND SERVED Fabricating

PRODUCTS / SERVICES

- Sheet Metal Fabrication
- Stamping

Winegar, Inc.

Tim Wenzel
1209 State St S
Waseca, MN 56093
winegarinc.com
tim.wenzel@winegarinc.com
PHONE (507) 835-3495

FOUNDED 1979 **MPMA** 1997
EMPL 82

IND SERVED Contract
Manufacturing, Industrial,
Metalworking, OEM's, Off Road
Equipment

PRODUCTS / SERVICES

- Machining - Large Capacity
- Production Machining
- Screw Machining

Wolkerstorfer Co., Inc.

Kurt Weamer
348 1st Street SW
New Brighton, MN 55112
wolkerstorfer.com
sales@wolkerstorfer.com
PHONE (651) 636-0720

FOUNDED 1895 **MPMA** 10/30/13
EMPL 40 **SQ FT** 83,000

IND SERVED Aerospace,
Defense, Industrial, Medical

PRODUCTS / SERVICES

- Metal Finishing
- Plating/Coatings

ZTECH Precision

Don Zoubek
6459 144th Ave NW, Suite 102
Ramsey, MN 55303
ztechprecision.com
don@ztechprecision.com

PHONE (763) 635-0033

FOUNDED 2009 **MPMA** 03/04/14
EMPL 25 **SQ FT** 12,500

IND SERVED Aerospace,
Aviation, Contract Manufacturing,
Defense, Medical, Tool & Die

CERTIFICATIONS AS 9100; ISO
9001; ITAR Registered

PRODUCTS / SERVICES

- Electrical Discharge Machining
- Milling
- Tool and Die
- Turning



2025 BUYER'S GUIDE

Welcome to the 2025 edition of MPMA's Buyer's Guide, a trusted resource for MPMA members.

KEEP THE GUIDE! USE IT OFTEN!

- It's the "Yellow Pages" of precision manufacturing, where you can reach your fellow MPMA members when you need specific services. There's also an index on the next page for easy reference.
- Don't forget to cross reference the Guide with the extended Member Directory that starts on page 14 of the magazine. It gives individualized information about all MPMA members.
- The information printed in the Guide is available online at mpma.com. Go to "Members" in the top menu bar, and select "Member Search." You can search by a company name, location, services, or industries served to find a fellow MPMA member to meet your needs.
- Members can update their profile at any time of the year by logging into their company account on mpma.com to change their information – from the company address, phone number, services provided, and many more. So, the most up-to-date information can be found on mpma.com.

THANK YOU for being a member.

ABRASIVES

Abrasive Specialists, Inc.

Jaime Olsen
(763) 571-4111
jaime.olsen@asimn.com

Barry & Sewall Industrial Supply

Steve Olson
(612) 331-6170
steveo@barrysewall.com

Mars Company

Bob Mars
(952) 884-9388
rmars3@marssupply.com

Quality & Service Machine Tool Company

Bill Lidfors
(651) 646-7433
bill@qandsmachinetool.com

Replenex, Inc.

Matt Cohen
(952) 941-9150
info@replenex.com

Timesavers LLC

Jim Heard
(763) 488-6600
jheard@timesaversinc.com

ACCOUNTING

Boyum Barendseer

Randy Feld
(952) 854-4244
pfleming@myboyum.com

CBIZ MHM, LLC

Linde Sexson
(216) 447-9000
linde.sexson@cbiz.com

Creative Planning

Bridget Hallstrom
(952) 563-6800
bridget.hallstrom@creativeplanning.com

DSB Rock Island | Business & Wealth Management Partners

Nancy Stanger
(612) 483-3734
nstanger@dsb-cpa.com

Froehling Anderson

Rick Wiethorn
(952) 979-3100
rwiethorn@fa-cpa.com

G&A Partners

Russ Simatic
(952) 656-0181
russ.simatic@gmail.com

LB Carlson, LLP

Dea Johnson
(763) 971-4819
djohnson@lbcarlson.com

Redpath and Company

Angela Wilke
(651) 478-1524
awilke@redpathcpas.com

SDK CPAs

Brandon Reinschmidt
(612) 332-5500
breinschmidt@sdcpa.com

Twin City Staffing

Matt Miner
(612) 462-2688
matt@twincitystaffing.com

ADDITIVE MANUFACTURING/ INDUSTRIAL 3D PRINTING

AdvancedTek

Heather Adams
(651) 489-6990
hadams@advancedtek.com

B & E Tool Company, Inc.

Gary Noel
(763) 571-1802
gary.noel@betoolmfg.com

DMG MORI USA, Inc.

Dale Mortier
(763) 218-0823
dmortier@dmgmori-usa.com

Morris Midwest MN

Todd Campbell
(763) 424-5622
tcampbell@morrismidwest.com

Sodick, Inc.

Joel Manns
(651) 319-7259
jmanns@sodick.com

Stratasys

Adam Pawloski
(952) 294-3443
adam.pawloski@stratasys.com

ALUMINUM COIL

Erickson Metals of MN, Inc.

Todd Siegfried
(763) 785-2340
tsiegfried@ericksonmetals.com

ALUMINUM EXTRUSION - PLATE & SHEET

Alexandria Industries

Deb Moorman
(800) 568-6601
dmoorman@alexandriaindustries.com

Erickson Metals of MN, Inc.

Todd Siegfried
(763) 785-2340
tsiegfried@ericksonmetals.com

Midwest Steel Supply Company

Brandon Walton
(763) 582-1925
bw@midweststeelsupply.com

ASSEMBLY

Air Engineering & Supply, Inc.

David Maurer
(612) 332-4181
david@airengr.com

Aprios Custom Manufacturing

Alex Danzberger
(763) 424-2525
adanzberger@aprios.com

Atscott Manufacturing Company, Inc.

Jacob Kiel
(612) 462-9719
jkiel@atscott.com

Continental Engr. & Mfg., Inc.

Eric Andersen
(952) 448-4771
eric@cem-web.com

Dynamic Group

Joe McGillivray
(763) 780-8674
accounting@dynamicgroup.com

Elektro Assemblies

Jon Bush
(800) 533-1558
jon.bush@elektroassemblies.com

ICA Corporation

Steve Hoaglund
(763) 428-2800
steveh@icacorp.com

IFS-Industrial Fabrication Services, Inc.

Matt Doherty
(507) 726-6000
matt@ifssteelcorp.com

Industrial Tool Inc.

Nick Archer
(763) 533-7244
narcher@industrial-tool.com

Kendall Howard

Randy Herreid
(651) 213-1333
rherreid@kendallhoward.com

Lowell, Inc.

Ron Spah
(612) 493-6648
ron.spah@lowellinc.com

Metal Craft

Trisha Mowry
(763) 441-1855
trisha@metal-craft.com

MRG Tool and Die Corp.

Rodney Gramse
(507) 334-1847
rgramse@toolanddie.net

Plastic Products Company Inc. (PPC)

Rob Zemke
(651) 257-7879
robertzemke@plasticproductsco.com

Pride Solutions

Jack Daggett
(320) 587-0760
jdaggett@pridesolutions.com

Steinwall, Inc.

Tom Smolenski
(763) 767-7080
tsmolenski@steinwall.com

TEAM Industries

Carri Pickett
(218) 694-3550
carripickett@team-ind.com

Teamvantage, A Velocity Company

Thomas Caron
(651) 464-3900
sales@teamvantage.com

AUTOMATION INTEGRATION

Air Engineering & Supply, Inc.

David Maurer
(612) 332-4181
david@airengr.com

CONCEPT Advanced Manufacturing Solutions

Benjamin Rashleger
(763) 559-1975
benr@conceptmachine.com

Edge Technologies

Dean Everson
(952) 356-5236
deverson@edgetechnologies.com

Industrial Tool Inc.

Nick Archer
(763) 533-7244
narcher@industrial-tool.com

Infinity Robotics LLC

Dave Neville
(952) 210-0536
dneville@infinityrobotics.com

PackEdge Co

John Hanson
(612) 607-5700
jhanson@packedgeco.com

SUCCESS Computer Consulting

Taylor Goetz
(763) 593-3000
marketing@sccnet.com

BANKING/ FINANCING

Alerus Financial

Shane Ewanika
(651) 464-3900
shane.ewanika@alerus.com

Bell Bank

Julie Lovaas
(952) 905-5022
jlovaas@bell.bank

Bridgewater C&I

Elizabeth Fechter
(952) 737-4726
elizabeth.fechter@bwbn.com

CorTrust Bank

Brian Whitmarsh
(651) 289-5000
bwhitmarsh@cortrustbank.com

Frandsen Bank & Trust

Brian Brakke
(651) 209-3827
bbrakke@frandsenbank.com

KLC Financial, Inc.

Gyles Uhlenhopp
(952) 224-4300
info@klcfinc.com

Scale Bank Equipment Finance

Taylor Lagieski
(952) 830-7296
taylor.lagieski@scale.bank

CALIBRATION - TEST & INSPECTION

Alliance Metrology, Inc.

Jeff Kreckow
(763) 493-0026
info@alliancemetrology.com

Precision Repair & Calibration Inc.

Paula Durand
(763) 200-1530
paula@precisionmn.com

Productivity Quality Inc/ Advanced Inspection Services LLC

Hannah Anderson
(763) 249-8130
hannah.anderson@pqi.net

Stone Machinery, Inc.

Tom Drazkowski
(651) 778-8887
info@stonemachinery.com

United Standards Lab, Inc.

James Dolezal
(612) 823-2616
jim@unitedstandardslab.com

CAPITAL EQUIPMENT FINANCING

Bell Bank

Julie Lovaas
(952) 905-5022
jlovaas@bell.bank

Bridgewater C&I

Elizabeth Fechter
(952) 737-4726
elizabeth.fechter@bwbn.com

CorTrust Bank

Brian Whitmarsh
(651) 289-5000
bwhitmarsh@cortrustbank.com

Frandsen Bank & Trust

Brian Brakke
(651) 209-3827
bbrakke@frandsenbank.com

KLC Financial, Inc.

Gyles Uhlenhopp
(952) 224-4300
info@klcfinc.com

Scale Bank Equipment Finance

Taylor Lagieski
(952) 830-7296
taylor.lagieski@scale.bank

COIL SPRINGS/ WIRE FORMS

Western Spring Manufacturing

Alex Altstatt
(651) 224-1721
alex@westernspring.com

COMPUTER SOFTWARE & TRAINING

a COUPLE of GURUS

Keith Schoolcraft
(952) 224-4300
admin@acoupleofgurus.com

Alliance Metrology, Inc.

Jeff Kreckow
(763) 493-0026
info@alliancemetrology.com

Anoka Technical College Anoka-Ramsey Community College

Heidi Braun
(952) 224-4300
heidi.braun@anokaramsey.edu

BizzyWeb

Dave Meyer
(612) 424-9990
dave.meyer@bizzyweb.com

Midwest CAM Solutions, LLC

Don Casanova
(763) 560-6567
don@midwestcamsolutions.com

Paperless Parts

Suzi Leamon
(617) 475-0161
suzi.leamon@paperlessparts.com

ProtoTek Engineering, Inc.

Dave Meyer
(952) 361-5598
david@prototek-engineering.com

SUCCESS Computer Consulting

Taylor Goetz
(763) 593-3000
marketing@sccnet.com

CONSTRUCTION

All Elements, Inc.

Paul Levisse
(763) 314-0234
paul@allementsinc.net

Bauer Design Build LLC

Mike Bauer
(952) 224-4300
mike.b@bauerdb.com

Heritage Construction Companies, LLC

Andy Christensen
(763) 633-4080
andy@heritageconstructionmn.com

Larson Building Inc.

Andy Larson
(763) 634-5600
andy.larson@larsonbuilding.com

Maertens-Brenny Construction

Erica Foster
(763) 786-4779
efoster@maertensbrenny.com

OECs - OSHA + Environmental Compliance Systems

Melissa Olheiser
(763) 417-9599
melissa@oecscs.com

COOLANTS/ LUBRICANTS

Abrasive Specialists, Inc.

Jaime Olsen
(763) 571-4111
jaime.olsen@asimn.com

Lube-Tech

Mike Jordan
(651) 636-7990
mikejor@lubetech.com

Master Fluid Solutions

Justin Boespflug
(612) 209-5004
jboespflug@masterfluids.com

Quality & Service Machine Tool Company

Bill Lidfors
(651) 646-7433
bill@qandsmachinetool.com

CUTTING TOOLS DISTRIBUTOR

Abrasive Specialists, Inc.

Jaime Olsen
(763) 571-4111
jaime.olsen@asimn.com

Centennial Carbide

Hailey Norville
(763) 792-8546
hailey@centennialcarbide.com

Mars Supply

Bob Mars
(952) 703-8624
rmars3@marssupply.com

Midwest Machine Tool Supply

Doug Eliason
(763) 571-3550
doug@midwestmachinetool.com

Productivity Inc.

Greg Buck
(763) 476-8600
gbuck@productivity.com

Quality & Service Machine Tool Company

Bill Lidfors
(651) 646-7433
bill@qandsmachinetool.com

Replenex, Inc.

Matt Cohen
(952) 941-9150
info@replenex.com

SCHUNK, Inc.

Matt Steele
(800) 772-4865
matt.steele@us.schunk.com

CUTTING TOOLS MANUFACTURER

C & C Machine Tool Inc.

Mandy Drawert
(612) 308-2154
ccmachinetoolinc@gmail.com

NTM, Inc.

Barb Dorumsgaard
(800) 772-4865
barbd@ntminc.com

Salient, Inc.

Jim Schaffer
(320) 455-8021
jim@salientincorporated.com

DEBURRING

Arrow Finishing, Inc.

Danforth Messerly
(763) 780-3367
danforth.messerly@arrowfinishing.com

ISO Finishing, Inc.

Mike Klein
(763) 273-1052
mike@isofinishing.com

Micro-Matics Incx.

Tony Herbst
(763) 780-2700
therbst@micro-matics.com

DEEP HOLE DRILLING

American Machine & Gundrilling Co., Inc.

Chuck Berg, Jr.
(763) 425-3830
chuckjr@amgundrilling.com

Comet Tool, Inc.

Jim Freitag
(952) 935-3798
jim.freitag@comettoolinc.com

ECONOMIC DEVELOPMENT

Alexandria Technical & Community College

Michael Seymour
(320) 762-0221
michael.seymour@alextech.edu

VisionOne High Performance Group, Inc.

Nicole Shearer
(952) 210-9293
nicole@visiononeperformance.com

ELECTRICAL DISCHARGE MACHINING

ABA Water Systems, Inc.

Tim Weaver
(800) 257-1271
tim@abawatersystems.com

Accu-Prompt, Inc.

Scott Hoffmann
(763) 783-1020
trlevi@accuprompt.com

Agrimson Tool Company, Inc.

Gary Agrimson
(763) 566-3446
mailroom@agrimson.com

Andrew Tool & Machining Company

Bruce Hanson
(763) 559-0402
brucehanson@andrewtool.com

Advanced Research Corp. (ARC)

Judy Dugas
(651) 789-9000
jdugas@arcnano.com

Aurora Micro Machine

Eric Nelson
(763) 682-6474
eric.nelson@auroramicromachine.com

Brenk Brothers, Inc.

Jeff Brenk
(763) 784-5621
jeff.brenk@brenkbros.com

Die Technology, Inc.

Dale Skoog
(763) 424-9677
dskoog@dietechnology.com

Duo-Tec Tool Company

Dale Hanken
(763) 425-5005
dhanken@duotectool.com

EDM Tech Center, Inc.

Jerry Dillon
(763) 315-9104
jerry@edmttechcenter.com

Ellison Technologies

John Schwartz
(763) 545-9699
jschwartz@ellisontechnologies.com

Imagineering Machine Inc.

Jesse Schelitzche
(952) 922-9311
js@imagineeringmachine.com

Iron Machine Tool

Steve Brown
(630) 347-9559
steve.brown@ironmachinetool.com

Klesk Metal Stamping Co

Jeff Marone
(612) 331-8792
jeffm@kleskmetalstamping.com

Mold-Tech, Inc.

Rebecca Ford
(303) 249-7842
rford@mold-techinc.com

OpOne Group

Tyler Stilson
(763) 497-7500
tyler@oponeseamfg.com

Orca Machine Tools, Inc.

Theron Horn
(763) 494-9825
thorn@orca-inc.com

Sodick, Inc.

Joel Manns
(651) 319-7259
jmanns@sodick.com

Twin City EDM & Manufacturing, Inc.

Steve Lindell
(763) 783-7808
info@twincityedm.com

ZTECH Precision

Don Zoubek
(763) 635-0033
don@ztechprecision.com

**ELECTRICAL
SERVICES &
ASSEMBLY**

Korin Electronics Repair & Assembly

Tom Korin
(612) 889-6435
tom@kerainc.com

**EMPLOYEE
BENEFITS**

Alerus Financial

Shane Ewanika
(612) 305-4235
shane.ewanika@alerus.com

Brown & Brown of MN

James Clairmont
(612) 333-3323
james.clairmont@bbrown.com

DSB Rock Island | Business & Wealth Management Partners

Nancy Stanger
(612) 359-9630
nstanger@dsb-rockisland.com

G&A Partners

Russ Simatic
(952) 656-0181
rsimatic@gnapartners.com

Larkin Hoffman Attorneys

Mark Geier
(952) 896-3228
mgeier@larkinhoffman.com

Twin City Staffing

Matt Miner
(612) 462-2688
matt@twincitystaffing.com

**ENGINEERING &
DESIGN SERVICES**

Air Engineering & Supply, Inc.

David Maurer
(612) 332-4181
david@airengr.com

Applied Engineering, Inc.

John Oleson
(763) 420-6600
joleson@go-applied.com

Bauer Design Build LLC

Mike Bauer
(763) 972-0000
mike.b@bauerdb.com

C-Axis Inc.

Toni Bailey
(763) 478-8982
tonib@c-axis.com

Caztek Engineering

Casimir Sienkiewicz
(651) 291-8007
accounting@cazteck.com

Domaille Engineering LLC

Mike Utley
(507) 267-3084
mutley@domaillecompanies.com

Heritage Construction Companies, LLC

Andy Christensen
(763) 633-4080
andy@heritageconstructionmn.com

IEA, Inc.

Amy Satterfield
(763) 315-7900
amy.satterfield@ieasafety.com

IFS-Industrial Fabrication Services, Inc.

Matt Doherty
(507) 726-6000
matt@ifssteelfab.com

Kendall Howard

Randy Herreid
(651) 213-1333
rherreid@kendallhoward.com

Maertens-Brenny Construction

Erica Foster
(763) 786-4779
efoster@maertensbrenny.com

**Productivity Quality Inc/
Advanced Inspection Services LLC**

Hannah Anderson
(763) 249-8130
hannah.anderson@pqi.net

ProtoTek Engineering, Inc.

Dave Meyer
(952) 361-5598
david@prototek-engineering.com

QC Training Services, Inc.

Anish Shah
(952) 746-5725
ashah@qctraininginc.com

Steinwall, Inc.

Tom Smolenski
(763) 767-7080
tsmolenski@steinwall.com

**ENVIRONMENTAL
& FACILITIES
SERVICES**

IEA, Inc.

Amy Satterfield
(763) 315-7900
amy.satterfield@ieasafety.com

Maertens-Brenny Construction

Erica Foster
(763) 786-4779
efoster@maertensbrenny.com

MnTAP - Minnesota Technical Assistance Program

Jon Schroeder
(612) 624-4645
jschro@umn.edu

EXPENSE REDUCTION ADVISORS

SUCCESS Computer Consulting

Taylor Goetz
(763) 593-3000
marketing@sccnet.com

Waypost Advisors

Rob Kress
(952) 222-8178
robk@waypostadvisors.com

FABRICATING

AmeriStar Manufacturing Inc.

Dan Sacco
(507) 625-1515
fab@ameristarmfg.com

Apollo Technology Group, LLC

Jitesh Mehta
(952) 227-6600
jitesh.mehta@apollo technologygroup.com

Aprios Custom Manufacturing

Alex Danzberger
(763) 424-2525
adanzberger@aprios.com

CNC Metalcraft

Evan Lundeen
(952) 938-3356
evanlundeen@cncmetalcraft.com

Falls Fabricating LLC

Dan Ortloff
(320) 632-2322
dortloff@fallsfab.com

IFS-Industrial Fabrication Services, Inc.

Matt Doherty
(507) 726-6000
matt@ifssteelfab.com

Jones Metal, Inc.

Valerie Bentdahl
(507) 625-4436
vbentdahl@jonesmetalinc.com

Metal Trade Solutions

Tobias Flood
(320) 510-4292
sales@metaltls.com

MRG Tool and Die Corp.

Rodney Gramse
(507) 334-1847
rgramse@toolanddie.net

Pride Solutions

Jack Daggett
(320) 587-0760
jdaggett@pridesolutions.com

Production Engineering Corp.

Mike Albers
(612) 788-9123
mhalbers@pecorp.net

Source Machine Alliance

Brian Bester
(763) 553-1711
charlie@sourcemachinerysales.com

FACTORY DATA ANALYTICS & AI

FactoryTwin

Vivek Saxena
(952) 204-3787
vivek.saxena@factory-twin.com

FOUNDRIES AND CASTING

Craft, Pattern & Mold

Anthony Creemers
(763) 675-3169
tony@craftpattern.com

Dotson Iron Castings

Josh Jaycox
(507) 345-5018
jjaycox@dotson.com

Smith Foundry Company

Neil Ahlstrom
(612) 729-9395
ahlstrom_neil@smithfoundry.com

GAUGING

Abrasive Specialists, Inc.

Jaime Olsen
(763) 571-4111
jaime.olsen@asimn.com

United Standards Lab, Inc.

James Dolezal
(612) 823-2616
unitedstandardslab@gmail.com

GEAR CUTTING AND BROACHING

International Precision Machining, Inc.

Eric Meyer
(320) 656-1241
ericm@ipminc.com

HONING - LAPPING AND FINISHING

Minnesota Grinding, Inc.

Nolan Schoening
(763) 535-4445
nolan@minnesotagrinding.com

HUMAN RESOURCES (HR)

G&A Partners

Russ Simatic
(952) 656-0181
rsimatic@gnapartners.com

HYDRAULIC/ PNEUMATICS

Air Engineering & Supply, Inc.

David Maurer
(612) 332-4181
david@airengr.com

Midwest Machine Tool Supply

Doug Eliason
(763) 571-3550
doug@midwestmachinetool.com

INDUSTRIAL SUPPLIER

Air Engineering & Supply, Inc.

David Maurer
(612) 332-4181
david@airengr.com

Alro Steel Corporation

Mark Ruger
(612) 270-5561
mruger@alro.com

Apollo Technology Group, LLC

Jitesh Mehta
(952) 227-6600
jitesh.mehta@apollo technologygroup.com

EDM Tech Center, Inc

Jerry Dillon
(763) 315-9104
jerry@edmtchcenter.com

INFORMATION TECHNOLOGY

a COUPLE of GURUS

Keith Schoolcraft
(952) 224-4300

INSURANCE

Brown & Brown of MN

James Clairmont
(612) 333-3323
james.clairmont@bbrown.com

DSB Rock Island | Business & Wealth Management Partners

Nancy Stanger
(612) 359-9630
nstanger@dsb-rockisland.com

Federated Insurance

Hunter Kennedy
(334) 434-0644
htkennedy@fedins.com

G&A Partners

Russ Simatic
(952) 656-0181
rsimatic@gnapartners.com

ISO CERTIFICATION SERVICES

American Global Standards
Stephen Kenally
(617) 838-4648
info@americanglobal.org

QC Training Services, Inc.
Anish Shah
(952) 746-5725
ashah@qctraininginc.com

LASER CUTTING

Branch Manufacturing Company, Inc.
Tim Fairbanks
(651) 674-4441
timf@branchmfg.com

Clow Stamping Company, Inc.
Dennis Smith
(218) 765-3111
dsmith@clowstamping.com

HSI Manufacturing
Paula Herda
(763) 682-1114
sales@hsimfginc.com

ICA Corporation
Steve Hoaglund
(763) 428-2800
shoaglund@icacorp.com

Jones Metal, Inc.
Valerie Bentdahl
(507) 625-4436
vbentdahl@jonesmetalinc.com

Olympic Steel, Inc.
Tom Sacco
(763) 544-7100
tsacco@olysteel.com

Stampings of MN, Inc.
Andrea Miller
(952) 469-8641
amiller@stampingsofminnesota.com

LASER MARKING

Arrow Finishing, Inc.
Danforth Messerly
(763) 780-3367
danforth.messerly@arrowfinishing.com

Comet Tool, Inc.
Jim Freitag
(952) 935-3798
jim.freitag@comettoolinc.com

Morris Midwest MN
Todd Campbell
(763) 424-5622
tcampbell@morrismidwest.com

Salient, Inc.
Jim Schaffer
(320) 455-8021
jim@salientincorporated.com

LEGAL

Eckberg Lammers P.C.
Kevin Sandstrom
(651) 439-2878
ksandstrom@eckberglammers.com

Larkin Hoffman Attorneys
Mark Geier
(952) 896-3228
mgeier@larkinhoffman.com

LUBRICATION EQUIPMENT & SYSTEMS

Lube-Tech
Mike Jordan
(651) 636-7990
mikejor@lubetech.com

MACHINE & ELECTRICAL REPAIR

C & C Machine Tool Inc.
Mandy Drawert
(612) 308-2154
ccmachinetoolinc@gmail.com

Korin Electronics Repair & Assembly
Tom Korin
(612) 889-6435
tom@kerainc.com

MACHINE TOOL MANUFACTURER (OEM)

Edge Technologies
Dean Everson
(952) 356-5236
deverson@edgetechnologies.com

IEMCA
Ray Varady
(704) 249-5037
r.varady@bucci-industries.com

J&J Machine, Inc.
John Lenz
(763) 421-0114
sales@jandjmachine.com

Matsuura Machinery USA
Billy Bogue
(651) 289-9713
billy.bogue@matsuurausa.com

Milltronics, USA
Steve Schermann
(952) 442-1410
sschermann@milltronics.com

Stratasys
Adam Pawloski
(952) 294-3443
adam.pawloski@stratasys.com

Twin City EDM & Manufacturing, Inc.
Steve Lindell
(763) 783-7808
info@twincityedm.com

MACHINE TOOL SALES (USED)

Maruka USA
Matt Kelly
(800) 262-7852
mkelly@marukausa.com

Orca Machine Tools, Inc.
Theron Horn
(763) 494-9825
thorn@orca-inc.com

Source Machine Alliance
Brian Bester
(763) 553-1711
charlie@sourcemachinerysales.com

MACHINE TOOL SALES CHIP CUTTING

CONCEPT Machine Tool Sales, Inc.
Ben Rashleger
(763) 559-1975
benr@conceptmachine.com

DMG Mori USA, Inc.
Dale Mortier
(763) 218-0823
dmortier@dmgmori-usa.com

Ellison Technologies
John Schwartz
(763) 545-9699
jschwartz@ellisontechnologies.com

Haimer USA
Craig Schepers
(630) 833-1500
craig.schepers@haimer-usa.com

Iron Machine Tool
Steve Brown
(630) 347-9559
steve.brown@ironmachinetool.com

Maruka USA
Matt Kelly
(800) 262-7852
mkelly@marukausa.com

Matsuura Machinery USA
Billy Bogue
(651) 289-9713
billy.bogue@matsuurausa.com

Morris Midwest MN
Todd Campbell
(763) 424-5622
tcampbell@morrismidwest.com

Northwest Machine
Joel Lundin
(763) 493-3660
jlundin@nwmtec.com

Orca Machine Tools, Inc.
Theron Horn
(763) 494-9825
thorn@orca-inc.com

Productivity Inc.
Greg Buck
(763) 476-8600
gbuck@productivity.com

Stone Machinery, Inc.
Tom Drazkowski
(651) 778-8887
info@stonemachinery.com

MACHINE TOOL SALES FABRICATION

C & C Machine Tool Inc.
Mandy Drawert
(612) 308-2154
ccmachinetoolinc@gmail.com

Haimer USA
Craig Schepers
(630) 833-1500
craig.schepers@haimer-usa.com

Maruka USA
Matt Kelly
(800) 262-7852
mkelly@marukausa.com

Productivity Inc.
Greg Buck
(763) 476-8600
gbuck@productivity.com

Source Machine Alliance
Brian Bester
(763) 553-1711
charlie@sourcemachinerysales.com

MACHINING - LARGE CAPACITY

Anderson Dahlen, Inc., A Gray Company
Cari Sather
(763) 852-4700
csather@andersondahlen.com

B & E Tool Company, Inc.
Gary Noel
(763) 571-1802
gary.noel@betoolmfg.com

BTD Tooling Division
Jeff King
(218) 846-2923
jeff.king@btdmfg.com

Continental Engr. & Mfg., Inc.
Eric Andersen
(952) 448-4771
eric@cem-web.com

Jonaco Machine
Jeff Hayes
(952) 448-5544
jrhayes@jonaco.com

Machining Technology
Laurent Deconinck
(763) 571-1772
ldeconinck@machining-technology.com

Mate Precision Technologies
Joe Schneider
(763) 421-0230
joe.schneider@mate.com

MRG Tool and Die Corp.
Rodney Gramse
(507) 334-1847
rgramse@toolanddie.net

Olympic Steel, Inc.
Tom Sacco
(763) 544-7100
tsacco@olysteel.com

OpOne Group
Tyler Stilson
(303) 249-7842
tyler@operosemfg.com

Orca Machine Tools, Inc.
Theron Horn
(763) 494-9825
thorn@orca-inc.com

Panther Precision Machine, Inc.
Tom Olson
(763) 586-9651
tolson@pantherprecision.com

Production Engineering Corp.
Mike Albers
(612) 788-9123
mhalbers@pecorp.net

Range Tool Company
Michael Peterson
(218) 410-9201
mike@rangetool.com

TEAM Industries
Carri Pickett
(218) 694-3550
carripickett@team-ind.com

The Toro Company
Eric Taylor
(952) 937-3340
eric.taylor@toro.com

Winegar, Inc.
Tim Wenzel
(507) 835-3495
tim.wenzel@winegarinc.com

MARKETING SERVICES

BizzyWeb
Dave Meyer
(612) 424-9990
dave.meyer@bizzweb.com

Magnetic North
Matt Timm
(952) 221-7931
m.timm@magnorth.com

Strother Communications Group
Patricia Henning Strother
(612) 288-2401
patriciah@scgpr.com

MATERIAL HANDLING

IEMCA
Ray Varady
(704) 249-5037
r.varady@bucci-industries.com

Infinity Robotics LLC
Dave Neville
(952) 210-0536
dneville@infinityrobotics.com

PackEdge Co
John Hanson
(612) 607-5700
jhanson@packedgeco.com

MERGERS & ACQUISITIONS

Boyum Barendscheer
Randy Feld
(952) 854-4244
pfleming@myboyum.com

Calhoun Companies
Jon Tichich
(612) 323-5070
jtichich@calhouncompanies.com

CBIZ MHM, LLC
Linde Sexson
(612) 376-1263
linde.sexson@cbiz.com

Creative Planning
Bridget Hallstrom
(952) 563-6800
bridget.hallstrom@creativeplanning.com

DSB Rock Island | Business & Wealth Management Partners
Nancy Stanger
(612) 359-9630
nstanger@dsb-rockisland.com

Eckberg Lammers P.C.
Kevin Sandstrom
(651) 439-2878
ksandstrom@eckberglammers.com

Froehling Anderson
Rick Wiethorn
(952) 979-3100
rwiethorn@fa-cpa.com

Larkin Hoffman Attorneys
Mark Geier
(952) 896-3228
mgeier@larkinhoffman.com

LB Carlson, LLP
Dea Johnson
(763) 971-4819
djohnson@lbcarlson.com

Redpath and Company

Angela Wilke
(651) 478-1524
awilke@redpathcpas.com

Sunbelt Business Advisors

Kevin Szozda
(612) 709-3446
kszoza@sunbeltmidwest.com

METAL FINISHING

Arrow Finishing, Inc.

Danforth Messerly
(763) 780-3367
danforth.messerly@arrowfinishing.com

Chandler Industries

Margaret Richter
(612) 339-8261
mrichter@chandlerindustries.com

D & B Plating Company

(Dugas Bowers)
Vince Wheeler
(763) 784-8038
vince@dugasbowers.com

ISO Finishing, Inc.

Mike Klein
(763) 273-1052
mike@isofinishing.com

Minnesota Grinding, Inc.

Nolan Schoening
(763) 535-4445
nolan@minnesotagrinding.com

Powder Coating Technologies, Inc.

Chad Fifield
(763) 559-4779
chad@powdercoatingtech.com

Precision Coatings, Inc.

Linda Grundtner
(651) 641-0878
lindag@precisioncoatings.com

The Lindgren Group-Avtac & Nico

Ken Barnes
(612) 822-2185
kbarnes@thelindgrengroup.com

Twin City Plating Company

Ben Mingar
(612) 331-8895
ben@twincityplating.com

Wolkerstorfer Co., Inc.

Kurt Weamer
(651) 636-0720
sales@wolkerstorfer.com

METAL SERVICE CENTER

Alro Steel Corporation

Mark Ruger
(612) 270-5561
mruger@alro.com

Cincinnati Tool Steel Co.

Rose Wagner
(800) 435-0717
rwagner@cintool.com

Erickson Metals of MN, Inc.

Todd Siegfried
(763) 785-2340
tsiegfried@ericksonmetals.com

M. Vincent & Associates, Ltd.

David Hannah
(952) 884-7733
dhannah@vincentmetals.com

Midwest Steel Supply Company

Brandon Walton
(763) 582-1925
bw@midweststeelsupply.com

Olympic Steel, Inc.

Tom Sacco
(763) 544-7100
tsacco@olysteel.com

METROLOGY

AirCorps Aviation

Eric Sorenson
(218) 444-4478
erics@aircorpsaviation.com

Alliance Metrology, Inc.

Jeff Kreckow
(763) 559-0026
info@alliancemetrology.com

CONCEPT Machine Tool Sales, Inc.

Ben Rashleger
(763) 559-1975
benr@conceptmachine.com

Ellison Technologies

John Schwartz
(763) 545-9699
jschwartz@ellisontechnologies.com

Martin Calibration Inc.

Mark Hirsch
(952) 882-1528
mhirsch@martincalibration.com

Northwest Machine

Joel Lundin
(763) 493-3660
jlundin@nwmtec.com

Precision Repair & Calibration Inc.

Paula Durand
(763) 200-1530
paula@precisionmn.com

Productivity Quality Inc/ Advanced Inspection Services LLC

Keith Summers
(763) 249-8130
keith.summers@pqii.net

United Standards Lab, Inc.

James Dolezal
(612) 823-2616
unitedstandardslab@gmail.com

MICRO MACHINING

Accu-Prompt, Inc.

Scott Hoffmann
(763) 783-1020
shoffmann@accuprompt.com

Advanced Research Corp. (ARC)

Judy Dugas
(651) 789-9000
jdugas@arcnano.com

Aurora Micro Machine

Eric Nelson
(763) 682-6474
eric.nelson@auroramicromachine.com

C-Axis Inc.

Toni Bailey
(763) 478-8982
tonib@c-axis.com

Colburn Manufacturing Company Inc.

Liz Wauters
(763) 331-0589
liz.wauters@colburnmfg.com

Die Technology, Inc.

Dale Skoog
(763) 424-9677
dskoog@dietechnology.com

DMG Mori USA, Inc.

Dale Mortier
(763) 218-0823
dmortier@dmgmori-usa.com

Iron Machine Tool

Steve Brown
(630) 347-9559
steve.brown@ironmachinetool.com

Micro-Matics Inc.

Tony Herbst
(763) 780-2700
therbst@micro-matics.com

Mold-Tech, Inc.

Rebecca Ford
(763) 497-7500
rford@mold-techinc.com

rms

Lee Zachman
(763) 786-1520
lzachman@machine.com

MILLING

A-1 Engineering

Blake Richner
(763) 786-8710
blake@a1eng.com

Accu-Prompt, Inc.

Scott Hoffmann
(763) 783-1020
shoffmann@accuprompt.com

AirCorps Aviation

Eric Sorenson
(218) 444-4478
erics@aircorpsaviation.com

APT Machining Inc.

Brian Mayo
(507) 931-5425
brianmayo@aptcnc.com

Advanced Research Corp. (ARC)

Judy Dugas
(651) 789-9000
jdugas@arcnano.com

Bizal Manufacturing Co.

Steve Bizal
(763) 571-4030
bizalmfg@bizalmfg.com

Brenk Brothers, Inc.

Jeff Brenk
(763) 784-5621
jeffbrenk@brenkbros.com

Cass Precision Machining

James Larson
(763) 298-3200
jamesl@cassprecision.com

Cheetah Precision, Inc.

Chris Bank
(651) 633-0530
chris@cheetahprecision.com

Columbia Precision Machine Corp.

James Johnson
(952) 890-1003
jrjohnson@columbiapmc.com

Command Tooling Systems LLC

Dan Ball
(763) 576-6910
dball@commandtool.com

Craft, Pattern & Mold

Anthony Cremers
(763) 675-3169
tony@craftpattern.com

Domaille Engineering LLC

Mike Utley
(507) 267-3084
mutley@domaillecompanies.com

Granger Machine, Inc.

Shannon Oelrich
(763) 444-3725
shannon@grangermachine.com

Ideal Industries, Inc.

Tom Kipping
(763) 389-2736
tom@idealindustriesinc.com

Imagineering Machine Inc.

Jesse Schelitzche
(952) 922-9311
js@imagineeringmachine.com

Jonaco Machine

Jeff Hayes
(952) 448-5544
jrhayes@jonaco.com

K & G Manufacturing Co.

Ashley Strouth
(507) 334-5501
invoices@kgmfg.com

Kurt Manufacturing Company Inc.

Kristi Teasley
(763) 572-1500
kteasley@kurt.com

Lake Engineering, Inc.

Mike Magnuson
(952) 253-2400
mikem@lakeengineering.com

Mack Engineering Corp.

Jennifer Salisbury
(612) 721-2471
jennifer.s@mackengineering.com

Maxcam Corporation

Chuck Olson
(651) 653-0969
chucko@maxcamcorp.com

Midwest CAM Solutions, LLC

Don Casanova
(763) 560-6567
don@midwestcamsolutions.com

Modern Manufacturing & Engineering, Inc.

Nancy Lien Berndt
(612) 781-3347
nancyl@mmecmn.com

MultiSource Mfg, LLC

Luis Gomez
(952) 456-5500
lgomez@multisourcemfg.com

New Ulm Precision Tool, Inc.

Paul Huseby
(507) 610-7770
phuseby@nuprecisiontool.com

Nordic Components, Inc.

Jarmo Kumpula
(952) 442-8901
jarmo@nordiccomp.com

Northland Screw Products, Inc.

James Martinson
(763) 753-3628
james@northlandscrewproducts.com

OpOne Group

Tyler Stilson
(303) 249-7842
tyler@operosemfg.com

Pequot Tool & Manufacturing, Inc.

Michael Goerges
(218) 568-8069
mgoerges@pequottool.com

Permac Industries

Darlene Miller
(952) 894-7231
dmiller@permacindustries.com

Precise Products Corporation

Jason Wennberg
(612) 522-2141
jwennberg@preciseproducts.com

Precision Tool Technologies, Inc.

Jim Goerges
(800) 450-8665
jim@precisiontooltech.com

Production Tool & Manufacturing, Inc.

Mark Boesch
(763) 559-5746
markb@protoolus.com

QDP Technologies

Troy Holien
(763) 712-1626
troy.holien@qdpotech.com

rms

Justin Nord
(763) 786-1520
jnord@machine.com

Sodick, Inc.

Joel Manns
(651) 319-7259
jmanns@sodick.com

Superior Aerospace

Bob Koss
(763) 786-0100
bobkoss@superioraerospace.net

Taylor Machine, Inc.

Alan Hoffman
(763) 786-5949
ahoffman@tmcinc.com

True North Precision

Steve Swain
(763) 572-0662
sswain@tnprecision.com

Twin City EDM & Manufacturing, Inc.

Steve Lindell
(763) 783-7808
info@twincityedm.com

Von Ruden Manufacturing, Inc.

Brandon Anderson
(763) 682-3122
brandon@vonruden.com

ZTECH Precision

Don Zoubek
(763) 635-0033
don@ztechprecision.com

MOLD MAKING

Custom Mold & Design LLC

Tom Caron
(763) 535-2334
sales@custommold.net

Dynamic Group

Joe McGillivray
(763) 780-8674
jmcgillivray@dynamicgroup.com

Machining Technology

Laurent Deconinck
(763) 571-1772
ldeconinck@machining-technology.com

Mold-Tech, Inc.

Rebecca Ford
(763) 497-7500
rford@mold-techinc.com

Omnitool, Inc.

Walter Waffensmith
(763) 535-4240
walter@omnitool.com

PLASTIC INJECTION MOLDING

Alexandria Industries

Deb Moorman
(800) 568-6601
dmoorman@alexandriaindustries.com

Aprios Custom Manufacturing

Alex Danzberger
(763) 424-2525
adanzberger@aprios.com

Dynamic Group

Joe McGillivray
(763) 780-8674
jmcgillivray@dynamicgroup.com

Plastic Products Company Inc. (PPC)

Rob Zemke
(651) 257-7879
robertzemke@plasticproductsco.com

Precision Tool Technologies, Inc.

Jim Goerges
(800) 450-8665
jim@precisiontooltech.com

Steinwall, Inc.

Tom Smolenski
(763) 767-7080
tsmolenski@steinwall.com

Teamvantage Molding LLC

Thomas Caron
(651) 464-3900
sales@teamvantage.com

**PLASTIC SHEET
ROD & TUBE**

Lion Engineering Plastics, Inc.

Scott King
(952) 641-6300
sking@lionep.com

Plastics International

Paul Carter
(952) 934-2303
paulc@plasticsintl.com

Pride Solutions

Jack Daggett
(320) 587-0760
jdaggett@pridesolutions.com

PLATING/COATINGS

D & B Plating Company (Dugas Bowers)

Vince Wheeler
(763) 784-8038
vince@dugasbowers.com

Precision Coatings, Inc.

Linda Grundtner
(651) 641-0878
lindag@precisioncoatings.com

The Lindgren Group-Avtec & Nico

Ken Barnes
(612) 822-2185
kbarnes@thelindgrengroup.com

Twin City Plating Company

Ben Minger
(612) 331-8895
ben@twincityplating.com

Wolkerstorfer Co., Inc.

Kurt Weamer
(651) 636-0720
sales@wolkerstorfer.com

PLATING/COATINGS

Huot Manufacturing Company

Tom Seivert
(651) 646-1869
t.seivert@huot.com

ICA Corporation

Steve Hoaglund
(763) 428-2800
shoaglund@icacorp.com

Powder Coating Technologies, Inc.

Chad Fifield
(763) 559-4779
chad@powdercoatingtech.com

**PRECISION
GRINDING**

A-1 Engineering

Blake Richner
(763) 786-8710
blake@a1eng.com

Agrimson Tool Company, Inc.

Gary Agrimson
(763) 566-3446
mailroom@agrimsontool.com

Andrew Tool & Machining Company

Bruce Hanson
(763) 559-0402
brucehanson@andrewtool.com

Cass Precision Machining

James Larson
(763) 298-3200
jamesl@cassprecision.com

C-Axis Inc.

Toni Bailey
(763) 478-8982
tonib@c-axis.com

Centennial Carbide

Hailey Norville
(763) 792-8546
hailey@centennialcarbide.com

Cincinnati Tool Steel Co.

Rose Wagner
(800) 435-0717
rwagner@cintool.com

Micro-Matics Inc.

Tony Herbst
(763) 780-2700
therbst@micro-matics.com

Minnesota Grinding, Inc.

Nolan Schoening
(763) 535-4445
nolan@minnesotagrinding.com

Minnesota Tool Group, Inc.

Marcus Amble
(320) 634-0609
mtg@minnesotatoolgroup.com

NTM, Inc.

Barb Dorumsgaard
(763) 780-1420
barbd@ntminc.com

OpOne Group

Tyler Stilson
(303) 249-7842
tyler@operosemfg.com

Precision Coatings, Inc.

Linda Grundtner
(651) 641-0878
lindag@precisioncoatings.com

Professional Instruments Company, Inc.

Greg Vogel
(952) 933-1222
gvogel@airbearings.com

Salient, Inc.

Jim Schaufler
(320) 455-8021
jim@salientincorporated.com

Silvertip Associates, Inc.

Dale Peterson
(763) 717-0773
silvertipassoc@aol.com

The Toro Company

Eric Taylor
(952) 937-3340
eric.taylor@toro.com

**PRODUCTION
MACHINING**

Alexandria Industries

Deb Moorman
(800) 568-6601
dmoorman@alexandriaindustries.com

Ameristar Manufacturing Inc.

Dan Sacco
(507) 625-1515
fab@ameristarmfg.com

Andrew Tool & Machining Company

Bruce Hanson
(763) 559-0402
brucehanson@andrewtool.com

(ARC) Advanced Research Corp.

Judy Dugas
(651) 789-9000
jdugas@arcnano.com

Atscott Manufacturing Company, Inc.

Jacob Kiel
(612) 462-9719
jkiel@atscott.com

B & E Tool Company, Inc.

Gary Noel
(763) 571-1802
gary.noel@betoolmfg.com

Cass Precision Machining

James Larson
(763) 298-3200
jamesl@cassprecision.com

Chandler Industries

Margaret Richter
(612) 339-8261
mrichter@chandlerindustries.com

Cheetah Precision, Inc.

Chris Bank
(651) 633-0530
chris@cheetahprecision.com

Comet Tool, Inc.

Jim Freitag
(952) 935-3798
jim.freitag@comettoolinc.com

Continental Engr. & Mfg., Inc.

Eric Andersen
(952) 448-4771
eric@cem-web.com

Custom Mold & Design LLC

Tom Caron
(763) 535-2334
sales@custommold.net

Domaille Engineering LLC

Mike Utley
(507) 267-3084
mutley@domaillecompanies.com

Dotson Iron Castings

Josh Jaycox
(507) 345-5018
jjaycox@dotson.com

Duo-Tec Tool Company

Dale Hanken
(763) 425-5005
dhanken@duotectool.com

Granger Machine, Inc.

Shannon Oelrich
(763) 444-3725
shannon@grangermachine.com

ICA Corporation

Steve Hoaglund
(763) 428-2800
shoaglund@icacorp.com

Ideal Industries, Inc.

Tom Kipping
(763) 389-2736
tom@idealindustriesinc.com

International Precision

Machining, Inc.
Eric Meyer
(320) 656-1241
ericm@ipmnc.com

J&J Machine, Inc.

John Lenz
(763) 421-0114
sales@jandjmachine.com

Jonaco Machine

Jeff Hayes
(952) 448-5544
jrhayes@jonaco.com

K & G Manufacturing Co.

Ashley Strouth
(507) 334-5501
invoices@kgmfg.com

Lake Engineering, Inc.

Mike Magnuson
(952) 253-2400
mikem@lakeengineering.com

Lowell, Inc.

Ron Spah
(612) 493-6648
ron.spah@lowellinc.com

Mathias Die Company, Inc.

Matt Bignell
(651) 451-0105
mbignell@mathias-die.com

Metal Craft & Riverside Machine & Engineering

Trisha Mowry
(763) 441-1855
trisha@metal-craft.com

Metal Trade Solutions

Tobias Flood
(320) 510-4292
sales@metaltls.com

MRG Tool and Die Corp.

Rodney Gramse
(507) 334-1847
rgramse@toolanddie.net

Nordic Components, Inc.

Jarmo Kumpula
(952) 442-8901
jarmo@nordiccomp.com

Northland Screw Products, Inc.

James Martinson
(763) 753-3628
james@northlandscrewproducts.com

NTM Inc.

Barb Dorumsgaard
(763) 780-1420
barbd@ntminc.com

Precise Products Corporation

Robert Willers
(612) 522-2141
rwillers@preciseproducts.com

Precision Tool Technologies, Inc.

Jim Goerges
(800) 450-8665
jim@precisiontooltech.com

Range Tool Company

Michael Peterson
(218) 410-9201
mike@rangetool.com

Superior Aerospace

Bob Koss
(763) 786-0100
bobkoss@superioraerospace.net

TEAM Industries

Carri Pickett
(218) 694-3550
carripickett@team-ind.com

The Specialty Manufacturing Company

Kevin Frane
(651) 762-4464
kfrane@specialtymfg.com

Von Ruden Manufacturing, Inc.

Brandon Anderson
(763) 682-3122
brandon@vonruden.com

Yeager Machine, Inc.

Tim Wenzel
(507) 835-3495
tim.wenzel@winegarinc.com

PROGRAMMING

**Anoka Technical College/
Anoka-Ramsey Community College**

Heidi Braun
(763) 576-4700
heidi.braun@anokaramsey.edu

Applied Engineering, Inc.

John Oleson
(763) 420-6600
joleson@go-applied.com

BizzyWeb

Dave Meyer
(612) 424-9990
dave.meyer@bizzyweb.com

Range Tool Company

Michael Peterson
(218) 410-9201
mike@rangetool.com

**PROTOTYPES/
SHORT RUN**

AdvancedTek

Heather Adams
(651) 489-6990
hadams@advancedtek.com

Applied Engineering, Inc.

John Oleson
(763) 420-6600
joleson@go-applied.com

BTD Tooling Division

Jeff King
(218) 846-2923
jeff.king@btdmfg.com

C-Axis Inc.

Toni Bailey
(763) 478-8982
tonib@c-axis.com

Caztek Engineering

Casimir Sienkiewicz
(651) 291-8007
accounting@caztek.com

Columbia Precision Machine Corp.

James Johnson
(952) 890-1003
jrjohnson@columbiapmc.com

Craft, Pattern & Mold

Anthony Cremers
(763) 675-3169
tony@craftpattern.com

Custom Mold & Design LLC

Tom Caron
(763) 535-2334
sales@custommold.net

D & B Plating Company (Dugas Bowers)

Vince Wheeler
(763) 784-8038
vince@dugasbowers.com

ICA Corporation

Steve Hoaglund
(763) 428-2800
shoaglund@icacorp.com

Ideal Industries, Inc.

Tom Kipping
(763) 389-2736
tom@idealindustriesinc.com

J&J Machine, Inc.

John Lenz
(763) 421-0114
sales@jandjmachine.com

Kendall Howard

Randy Herreid
(651) 213-1333
rherreid@kendallhoward.com

Maxcam Corporation

Chuck Olson
(651) 653-0969
chucko@maxcamcorp.com

Metal Craft & Riverside Machine & Engineering

Trisha Mowry
(763) 441-1855
trisha@metal-craft.com

Micro-Matics Inc.

Tony Herbst
(763) 780-2700
therbst@micro-matics.com

New Ulm Precision Tool, Inc.

Paul Huseby
(507) 610-7770
phuseby@nuprecisiontool.com

Professional Instruments Company, Inc.

Greg Vogel
(952) 933-1222
gvogel@airbearings.com

Smith Foundry Company

Neil Ahlstrom
(612) 729-9395
ahlstrom_neil@smithfoundry.com

Stratasys

Adam Pawloski
(952) 294-3443
adam.pawloski@stratasys.com

Western Spring Manufacturing

Alex Altstatt
(651) 224-1721
alex@westernspring.com

R & D TAX CREDIT CONSULTANTS

Boyum Barescheer

Randy Feld
(952) 854-4244
pfleming@myboyum.com

CBIZ MHM, LLC

Linde Sexson
(612) 376-1263
linde.sexson@cbiz.com

Froehling Anderson

Rick Wiethorn
(952) 979-3100
rwiethorn@fa-cpa.com

LB Carlson, LLP

Dea Johnson
(763) 971-4819
djohnson@lbcarlson.com

Redpath and Company

Angela Wilke
(651) 478-1524
awilke@redpathcpas.com

REAL ESTATE

Bauer Design Build LLC

Mike Bauer
(763) 972-0000
mike.b@bauerdb.com

Eckberg Lammers P.C.

Kevin Sandstrom
(651) 439-2878
ksandstrom@eckberglammers.com

Larson Building Inc.

Andy Larson
(763) 634-5600
andy.larson@larsonbuilding.com

Modern Commercial Real Estate

David Wiegatz
(952) 929-2020
davidw@modern-cre.com

Newmark

Lucas Long
(612) 250-7372
lucas.long@nrmk.com

RECYCLING

Alliance Recycling Group

Shane Alsdurf
(612) 588-2721
shanea@alliancesteelco.com

Industrial Compliance Services

Mike Antolik
(952) 474-2628
mike@industrialcomplianceservices.com

Lube-Tech

Mike Jordan
(651) 636-7990
mikejor@lubetech.com

Master Fluid Solutions

Justin Boespflug
(612) 209-5004
jboespflug@MasterChemical.com

MnTAP - MN Technical Assistance Program

Jon Schroeder
(612) 624-4645
jschro@umn.edu

RETIREMENT SERVICES/ SUCCESSION PLANNING

Alerus Financial

Shane Ewanika
(612) 305-4235
shane.ewanika@alerus.com

Bell Bank

Julie Lovaas
(952) 905-5022
jlovaas@bell.bank

Creative Planning

Bridget Hallstrom
(952) 563-6800
bridget.hallstrom@creativeplanning.com

DSB Rock Island | Business & Wealth Management Partners

Nancy Stanger
(612) 359-9630
nstanger@dsb-rockisland.com

SDK CPAs

Brandon Reinschmidt
(612) 522-5500
breinschmidt@sdkcpa.com

VisionOne High Performance Group, Inc.

Nicole Shearer
(952) 210-9293
nicole@visiononeperformance.com

ROBOTICS/ AUTOMATION

Air Engineering & Supply, Inc.

David Maurer
(612) 332-4181
david@airengr.com

Alexandria Technical & Community College

Michael Seymour
(320) 762-4403
michael.seymour@alextech.edu

IEMCA

Ray Varady
(704) 249-5037
r.varady@bucci-industries.com

Industrial Tool Inc.

Nick Archer
(763) 533-7244
narcher@industrial-tool.com

Infinity Robotics LLC

Dave Neville
(952) 210-0536
dneville@infinityrobotics.com

Motion Ai

Jim Hennen
(952) 937-8902
jim.hennen@ai.motion.com

Northwest Machine

Joel Lundin
(763) 493-3660
jlundin@nwmtec.com

Productivity Inc.

Greg Buck
(763) 476-8600
gbuck@productivity.com

SCHUNK, Inc.

Matt Steele
(800) 772-4865
matt.steele@us.schunk.com

SAFETY CONSULTANTS

G&A Partners

Russ Simatic
(952) 656-0181
rsimatic@gnapartners.com

IEA, Inc.

Amy Satterfield
(763) 315-7900
amy.satterfield@ieasafety.com

Industrial Compliance Services

Mike Antolik
(952) 474-2628
mike@industrialcomplianceservices.com

Mars Supply

Bob Mars
(952) 703-8624
rmars3@marssupply.com

OECS - OSHA + Environmental Compliance Systems

Melissa Olheiser
(763) 417-9599
melissa@oeccscomply.com

SAFETY EQUIPMENT

Air Engineering & Supply, Inc.

David Maurer
(612) 332-4181
david@airengr.com

Engineering Unlimited, Inc.

Patrick Werner
(952) 522-4040
pwwerner@engunl.com

Mars Supply

Bob Mars
(952) 703-8624
rmars3@marssupply.com

Replenex, Inc.

Matt Cohen
(952) 941-9150
matt.cohen@replenex.com

SAWING

Cincinnati Tool Steel Co.

Rose Wagner
(800) 435-0717
rwagner@cintool.com

Lion Engineering Plastics, Inc.

Scott King
(952) 641-6300
sking@lioneop.com

Midwest Steel Supply Company

Brandon Walton
(763) 582-1925
bw@midweststeelsupply.com

Plastics International

Paul Carter
(952) 934-2303
paulc@plasticsintl.com

QDP Technologies

Troy Holien
(763) 712-1626
troy.holien@qdpotech.com

SCREW MACHINING

Colburn Manufacturing Company Inc.

Liz Wauters
(763) 331-0589
liz.wauters@colburnmfg.com

Jonaco Machine

Jeff Hayes
(952) 448-5544
jrhayes@jonaco.com

Northland Screw Products, Inc.

James Martinson
(763) 753-3628
james@northlandscrewproducts.com

Northwest Swiss-Matic, LLC

Wade Halseth
(763) 544-4222
whalseth@nws-swissmatic.com

True North Precision

Steve Swain
(763) 572-0662
sswain@tnprecision.com

Winegar, Inc.

Tim Wenzel
(507) 835-3495
tim.wenzel@winegarinc.com

SHEET & PLATE ROLLING

Agrimson Tool Company, Inc.

Gary Agrimson
(763) 566-3446
mailroom@agrimsontool.com

CNC Metalcraft

Evan Lundeen
(952) 938-3356
evanlundeen@cncmetalcraft.com

SHEET METAL FABRICATION

AirCorps Aviation

Eric Sorenson
(218) 444-4478
erics@aircorpsaviation.com

Anderson Dahlen, Inc., A Gray Company

Cari Sather
(763) 852-4700
csather@andersondahlen.com

Atscott Manufacturing Company, Inc.

Jacob Kiel
(612) 462-9719
jkiel@atscott.com

Bermo Inc.

Linda Heltemes
(763) 786-7676
linda.heltemes@bermo.com

Chandler Industries

Margaret Richter
(612) 339-8261
mrichter@chandlerindustries.com

CNC Metalcraft

Evan Lundeen
(952) 938-3356
evanlundeen@cncmetalcraft.com

Falls Fabricating LLC

Dan Orloff
(320) 632-2322
dortloff@fallsfab.com

Huot Manufacturing Company

Tom Seivert
(651) 646-1869
t.seivert@huot.com

ICA Corporation

Steve Hoaglund
(763) 428-2800
shaoglund@icacorp.com

Kendall Howard

Randy Herreid
(651) 213-1333
rherreid@kendallhoward.com

Pequot Tool & Manufacturing, Inc.

Michael Goerges
(218) 568-8069
mgoerges@pequottool.com

Stampings of MN, Inc.

Andrea Miller
(952) 469-8641
amiller@stampingsofminnesota.com

Wilson Tool International

Chris Lawless
(651) 286-6000
chris.lawless@wilsontool.com

SHIPPING & DELIVERY

On Time Delivery Service, Inc.

Tim Holtan
(952) 884-4060
tholtan@bontime.com

STAFFING

Aerotek

Dylan Ballantine
(763) 923-2749
dballant@aerotek.com

Twin City Staffing

Matt Miner
(612) 462-2688
matt@twincitystaffing.com

STAMPING

AmeriStar Manufacturing Inc.

Dan Sacco
(507) 625-1515
fab@ameristarmfg.com

Bermo Inc.

Linda Heltemes
(763) 786-7676
linda.heltemes@bermo.com

Branch Manufacturing Company, Inc.

Troy Fairbanks
(651) 674-4441
troyf@branchmfg.com

Clow Stamping Company, Inc.

Dennis Smith
(218) 765-3111
dsmith@clowstamping.com

HSI Manufacturing

Paula Herda
(763) 682-1114
paula.herda@hsimfginc.com

Ideal Industries, Inc.

Tom Kipping
(763) 389-2736
tom@idealindustriesinc.com

Klesk Metal Stamping Co

Jeff Marone
(612) 331-8792
jeffm@kleskmetalstamping.com

MRG Tool and Die Corp.

Rodney Gramse
(507) 334-1847
rgramse@toolanddie.net

The Specialty Manufacturing Company

Kevin Frane
(651) 762-4464
kfrane@specialtytymfg.com

The Toro Company

Eric Taylor
(952) 937-3340
eric.taylor@toro.com

Western Spring Manufacturing

Alex Altstatt
(651) 224-1721
alex@westernspring.com

Wilson Tool International

Chris Lawless
(651) 286-6000
chris.lawless@wilsontool.com

SUPPLY SALES

AdvancedTek

Heather Adams
(651) 489-6990
hadams@advancedtek.com

EDM Tech Center, Inc.

Jerry Dillon
(763) 315-9104
jerry@edmtchcenter.com

Mars Supply

Bob Mars
(952) 703-8624
rmars3@marssupply.com

TECHNICAL COLLEGES/ EDUCATION

Alexandria Technical & Community College

Michael Seymour
(320) 762-0221
michael.seymour@alextech.edu

Anoka Hennepin ISD 11

Michael Hilber
(763) 433-4071
michael.hilber@anoka.k12.mn.us

Anoka Technical College/ Anoka-Ramsey Community College

Heidi Braun
(763) 576-4700
heidi.braun@anokaramsey.edu

Central Lakes College

Hara Charlier
(218) 855-8017
askcl@clcmn.edu

Dunwoody College of Technology

Alex Wong
(612) 374-5800
awong@dunwoody.edu

Hennepin Technical College

Rich Kelly
(952) 995-1345
rich.kelly@hennepintech.edu

Lake Superior College

Nathan Zobel
(218) 733-7732
nathan.zobel@lsc.edu

Minneapolis Community & Technical College

Paul Fiege
(612) 659-6000
paul.fiege@minneapolis.edu

Minnesota State Advanced Manufacturing Center of Excellence/ATE Regional Center

Jeremy Leffelman
(218) 755-4222
jleffelman@bemidjistate.edu

Minnesota State College Southeast

Marsha Danielson
(507) 453-2700
marsha.danielson@southeastmn.edu

Minnesota State Engineering Center of Excellence

Jason Bruns
(507) 389-1309
jason.bruns@mnsu.edu

MnTAP - Minnesota Technical Assistance Program

Jon Schroeder
(612) 624-4645
jschro@umn.edu

Pine Technical College

Joe Mulford
(320) 629-5100
joe.mulford@pine.edu

QC Training Services, Inc.

Anish Shah
(952) 746-5725
ashah@qctraininginc.com

Ridgewater College

Matt Feuerborn
(320) 234-8509
matthew.feuerborn@ridgewater.edu

South Central College

Susan Jameson
(507) 389-7200
susan.jameson@southcentral.edu

St. Cloud Technical & Community College

Aaron Barker
(320) 308-5353
abarker@sctcc.edu

VisionOne High Performance Group, Inc.

Nicole Shearer
(952) 210-9293
nicole@visiononeperformance.com

TOOL AND DIE

Branch Manufacturing Company, Inc.

Troy Fairbanks
(651) 674-4441
troyf@branchmfg.com

BTD Tooling Division

Jeff King
(218) 846-2923
jeff.king@btdmfg.com

Custom Mold & Design LLC

Tom Caron
(763) 535-2334
sales@custommold.net

Die Technology, Inc.

Dale Skoog
(763) 424-9677
dskoog@dietechnology.com

Duo-Tec Tool Company

Dale Hanken
(763) 425-5005
dhanken@duotectool.com

HSI Manufacturing

Paula Herda
(763) 682-1114
paula.herda@hsimfginc.com

Klesk Metal Stamping Co

Jeff Marone
(612) 331-8792
jeffm@kleskmetalstamping.com

Mate Precision Technologies

Joe Schneider
(763) 421-0230
joe.schneider@mate.com

Mathias Die Company, Inc.

Matt Bignell
(651) 451-0105
accounting@mathias-die.com

Minnesota Tool Group, Inc.

Marcus Amble
(320) 634-0609
mtg@minnesotatoolgroup.com

Minnesota Tool and Die Works, Inc.

Kathy Weeks
(763) 323-0145
kathy@mtwdwi.com

MRG Tool and Die Corp.

Rodney Gramse
(507) 334-1847
rgramse@toolanddie.net

New Ulm Precision Tool, Inc.

Paul Huseby
(507) 610-7770
phuseby@nuprecisiontool.com

Omnitool, Inc.

Walter Waffensmith
(763) 535-4240
walter@omnitool.com

Orca Machine Tools, Inc.

Theron Horn
(763) 494-9825
thorn@orca-inc.com

Professional Instruments Company, Inc.

Greg Vogel
(952) 933-1222
gvogel@airbearings.com

Stampings of MN, Inc.

Andrea Miller
(952) 469-8641
amiller@stampingsofminnesota.com

T.D. Wright, Inc.

David McEachern
(651) 227-1302
sales@tdwinc.com

ZTECH Precision

Don Zoubek
(763) 635-0033
don@ztechprecision.com

TOOL REPAIR/ SERVICING

Abrasive Specialists, Inc.

Jaime Olsen
(763) 571-4111
jaime.olsen@asimn.com

Korin Electronics Repair & Assembly

Tom Korin
(612) 889-6435
tom@kerainc.com

Mathias Die Company, Inc.

Matt Bignell
(651) 451-0105
accounting@mathias-die.com

Matsuura Machinery USA

Billy Bogue
(651) 289-9713
billy.bogue@matsuurausa.com

Minnesota Tool Group, Inc.

Marcus Amble
(320) 634-0609
mtg@minnesotatoolgroup.com

Precision Repair & Calibration, Inc.

Paula Durand
(763) 200-1530
paula@precisionmn.com

Productivity Inc.

Greg Buck
(763) 476-8600
gbuck@productivity.com

TUBE/WIRE BENDING & FABRICATION

Kendall Howard

Randy Herreid
(651) 213-1333
rherreid@kendallhoward.com

TURNING

Apollo Technology Group, LLC

Jitesh Mehta
(952) 227-6600
jitesh.mehta@apollostechnologygroup.com

APT Machining Inc.

Brian Mayo
(507) 931-5425
brianmayo@aptcnc.com

Bizal Manufacturing Co.

Steve Bizal
(763) 571-4030
bizalmfg@bizalmfg.com

Brenk Brothers, Inc.

Jeff Brenk
(763) 784-5621
jeff.brenk@brenkbros.com

Cass Precision Machining

James Larson
(763) 298-3200
jamesl@cassprecision.com

Columbia Precision Machine Corp.

James Johnson
(952) 890-1003
jrjohnson@columbiapmc.com

Command Tooling Systems LLC

Dan Ball
(763) 576-6910
dball@commandtool.com

Edge Technologies

Dean Everson
(952) 356-5236
deverson@edgetechnologies.com

Ellison Technologies

John Schwartz
(763) 545-9699
jschwartz@ellisontechnologies.com

Granger Machine, Inc.

Shannon Oelrich
(763) 444-3725
shannon@grangermachine.com

ICA Corporation

Steve Haaglund
(763) 428-2800
shaaglund@icacorp.com

Ideal Industries, Inc.

Tom Kipping
(763) 389-2736
tom@idealindustriesinc.com

Imagineering Machine Inc.

Jesse Schelitzche
(952) 922-9311
js@imagineeringmachine.com

International Precision Machining, Inc.

Eric Meyer
(320) 656-1241
ericm@ipmnc.com

Jonaco Machine

Jeff Hayes
(952) 448-5544
jrhayes@jonaco.com

K & G Manufacturing Co.

Ashley Strouth
(507) 334-5501
invoices@kgmfg.com

Kurt Manufacturing Company Inc.

Kristi Teasley
(763) 572-1500
kteasley@kurt.com

Lake Engineering, Inc.

Mike Magnuson
(952) 253-2400
mikem@lakeengineering.com

Machining Technology

Laurent Deconinck
(763) 571-1772
ldeconinck@machining-technology.com

Mack Engineering Corp.

Jennifer Salisbury
(612) 721-2471
jennifer.s@mackengineering.com

Maxcam Corporation

Chuck Olson
(651) 653-0969
chucko@maxcamcorp.com

Modern Manufacturing & Engineering, Inc.

Nancy Lien Berndt
(612) 781-3347
nancyl@mmeincmn.com

MultiSource Mfg, LLC

Luis Gomez
(952) 456-5500
lgomez@multisourcemfg.com

Nordic Components, Inc.

Jarmo Kumpula
(952) 442-8914
jarmo@nordiccomp.com

Northland Screw Products, Inc.

Rob Martinson
(763) 753-3628
rob@northlandscrewproducts.com

OpOne Group

Tyler Stilson
(303) 249-7842
tyler@operosemfg.com

Panther Precision Machine, Inc.

Tom Olson
(763) 586-9651
tolson@pantherprecision.com

Pequot Tool & Manufacturing, Inc.

Michael Goerges
(218) 568-8069
mgoerges@pequottool.com

Permac Industries

Darlene Miller
(952) 894-7231
dmiller@permacindustries.com

Precise Products Corporation

Robert Willers
(612) 522-2141
rwillers@preciseproducts.com

Production Tool & Manufacturing, Inc.

Mark Boesch
(763) 559-5746
markb@protoolus.com

QDP Technologies

Troy Holien
(763) 712-1626
troy.holien@qdpdtech.com

Superior Aerospace

Bob Koss
(763) 786-0100
bobkoss@superioraerospace.net

Von Ruden Manufacturing, Inc.

Brandon Anderson
(763) 682-3122
brandon@vonruden.com

ZTECH Precision

Don Zoubek
(763) 635-0033
don@ztechprecision.com

TURNING - SWISS

A-1 Engineering

Blake Richner
(763) 786-8710
blake@a1eng.com

Beaver Machine & Tool Inc.

Jay Groth
(763) 535-2204
beavshack@beavermachine.com

Cass Precision Machining

James Larson
(763) 298-3200
jamesl@cassprecision.com

Cheetah Precision, Inc.

Chris Bank
(651) 633-0530
chris@cheetahprecision.com

Colburn Manufacturing Company Inc.

Liz Wauters
(763) 331-0589
liz.wauters@colburnmfg.com

Edge Technologies

Dean Everson
(952) 356-5236
deverson@edgetechnologies.com

Lowell, Inc.

Ron Spah
(612) 493-6648
ron.spah@lowellinc.com

Mack Engineering Corp.

Jennifer Salisbury
(612) 721-2471
jennifer.s@mackengineering.com

Micro-Matics Inc.

Tony Herbst
(763) 780-2700
therbst@micro-matics.com

Midwest CAM Solutions, LLC

Don Casanova
(763) 560-6567
don@midwestcamsolutions.com

Modern Manufacturing & Engineering, Inc.

Nancy Lien Berndt
(612) 781-3347
nancyl@mmeincmn.com

MultiSource Mfg, LLC

Luis Gomez
(952) 456-5500
lgomez@multisourcemfg.com

Northland Screw Products, Inc.

Rob Martinson
(763) 753-3628
rob@northlandscREWproducts.com

Northwest Swiss-Matic, LLC

Wade Halseth
(763) 544-4222
whalseth@nwswissmatic.com

Permac Industries

Darlene Miller
(952) 894-7231
dmiller@permacindustries.com

Production Tool & Manufacturing, Inc.

Mark Boesch
(763) 559-5746
markb@protoolus.com

rms

Justin Nord
(763) 786-1520
jnord@machine.com

Taylor Machine, Inc.

Alan Hoffman
(763) 786-5949
ahoffman@tmcnc.com

The Specialty Manufacturing Company

Kevin Frane
(651) 762-4464
kfrane@specialtymfg.com

True North Precision

Steve Swain
(763) 572-0662
sswain@tnprecision.com

Twin City EDM & Manufacturing, Inc.

Steve Lindell
(763) 783-7808
info@twincityedm.com

WATER JET CUTTING

ABA Water Systems, Inc.

Tim Weaver
(800) 257-1271
tim@abawatersystems.com

Atscott Manufacturing Company, Inc.

Jacob Kiel
(612) 462-9719
jkiel@atscott.com

Bizal Manufacturing Co.

Mike Bizal, Jr.
(763) 571-4030
bizalmfg@bizalmfg.com

Minnesota Waterjet, Inc.

Marj Velishek
(763) 427-2114
marjv@mnwaterjet.com

MRG Tool and Die Corp.

Rodney Gramse
(507) 334-1847
rgramse@toolanddie.ne

WEALTH MANAGEMENT

Creative Planning

Bridget Hallstrom
(952) 563-6800
bridget.hallstrom@creativeplanning.com

DSB Rock Island | Business & Wealth Management Partners

Nancy Stanger
(612) 359-9630
nstanger@dsb-rockisland.com

WELDING

Anderson Dahlen, Inc., A Gray Company

Cari Sather
(763) 852-4700
csather@andersondahlen.com

Falls Fabricating LLC

Dan Orloff
(320) 632-2322
dortloff@fallsfab.com

HSI Manufacturing

Paula Herda
(763) 682-1114
paula.herda@hsimfginc.com

Metal Trade Solutions

Tobias Flood
(320) 510-4292
sales@metalts.com

MicroWeld

Derick White
(763) 425-8818
derick.white@microweldinc.com

Panther Precision Machine, Inc.

Tom Olson
(763) 586-9651
tolson@pantherprecision.com

Production Engineering Corp.

Mike Albers
(612) 788-9123
mhalbers@pecorp.net

WELDING - ROBOTIC

Bermo Inc.

Linda Heltemes
(763) 786-7676
linda.heltemes@bermo.com

Clow Stamping Company, Inc.

Dennis Smith
(218) 765-3111
dsmith@clowstamping.com

Jones Metal, Inc.

Valerie Bentdahl
(507) 625-4436
vbentdahl@jonesmetalinc.com

Kendall Howard

Randy Herreid
(651) 213-1333
rherreid@kendallhoward.com

WORKHOLDING

Abrasive Specialists, Inc.

Jaime Olsen
(763) 571-4111
jaime.olsen@asimn.com

Industrial Tool Inc.

Nick Archer
(763) 533-7244
narcher@industrial-tool.com

Kurt Manufacturing Company Inc.

Kristi Teasley
(763) 572-1500
kteasley@kurt.com

Mate Precision Technologies

Joe Schneider
(763) 421-0230
joe.schneider@mate.com

Midwest Machine Tool Supply

Doug Eliason
(763) 571-3550
doug@midwestmachinetool.com

MRG Tool and Die Corp.

Rodney Gramse
(507) 334-1847
rgramse@toolanddie.net

SCHUNK, Inc.

Matt Steele
(800) 772-4865
matt.steele@us.schunk.com

Stone Machinery, Inc.

Tom Drazkowski
(651) 778-8887
info@stonemachinery.com

UPCOMING EVENTS



Toolbox Talk: Practical Use for AI & Data Analytics in Your Shop

Wednesday, March 5, 2025
11:00 am – 12:00 pm
Webinar via Zoom



YMCA Psychological Safety

Wednesday, March 12, 2025
12:00 pm – 1:00 pm
Webinar via Zoom



48th Annual Golden Gloves presented by Sunbelt/True North M&A

Tuesday, March 25, 2025
6:00 pm – 9:30 pm
Medina Entertainment Center

Please contact Brenda at office@mpma.com with event questions or scan the QR code.



ADVERTISERS' INDEX

Calhoun Companies, Jon Tichich - calhouncompanies.com	11
Conext - conextsuccession.com	25
Concept - conceptmachine.com	23
CorTrust Bank - cortrustbank.com	26
Federated Insurance - federatedinsurance.com	25, 34
Lube-Tech - lubetech.com	Front Cover, 12-13
MRG Tool & Die Corp. - mrgtoolanddie.com	29
Midwest CAM Solutions, Inc. - midwestcamsolutions.com	Back Cover
Minnesota Grinding Inc. - minnesotagrinding.com	17
Minnesota Wild - nhl.com/wild	29
Plastics International - plasticsintl.com	9
Productivity, Inc. - productivity.com	2
Sodick - sodick.com	30
Strother Communications Group - strothercommunicationsgroup.com	7
Sunbelt Business Advisors - sunbeltmidwest.com	39
Twin City Staffing - twincitystaffing.com	5

Welcome New Members!

- **Strother Communications Group**, located in Minneapolis, is a full-service marketing agency that builds a communication strategy from the ground up — the best choice for companies aiming for serious, sustainable growth for the cost of an in-house marketing position.
- **Edge Technologies**, located in St. Louis, MO, is your complete source for CNC lathe automation and accessories with a two-tiered line-up of standard magazine bar feeders and a 35-year reputation for engineered solutions and technical support.
- **Maertens Brenny Construction**, located in Minneapolis, sets their priorities around the success of each project, job site safety, and the relationships with clients. They have the necessary experience and agility to keep challenging projects progressing smoothly to completion.
- **Waypost Advisors**, located in Eden Prairie, partners with teams from mid-market manufacturers and distribution companies to provide world-class supply chain expertise and proven best practices typically reserved for Fortune 500 companies.
- **IEA Inc.**, located in Brooklyn Park, is a premier environmental consulting firm providing comprehensive services to public and private sectors nationwide including education, healthcare, government, industrial, manufacturing, and corporate spaces.
- **Minnesota Waterjet**, located in Ramsey, does more than just cut. They provide the complete solutions you need to get the job done right according to your schedule and your budget.
- **Modern CRE**, located in Edina, is a commercial real estate firm comprised of industry professionals with experience ranging from locally owned brokerage, development, and property management firms to large global full service real estate companies with a focus on advising manufacturers with their commercial real estate needs.
- **Conext**, located in Minneapolis, has helped family-owned businesses, closely-held companies, and non-profit organizations develop healthy teams and make successful leadership transitions for three generations.
- **Creative Planning**, with three locations in the Twin Cities, is a fiduciary financial advisors and wealth managers work with in-house CPAs and attorneys to look at all elements of your financial life to ensure your money is working as hard as it can for you, day in and day out. [PM](#)



Minnesota *Precision Manufacturing* Journal

7700 68th Ave N, Suite 12
Brooklyn Park, MN 55428
www.mpma.com

PRSRT STD
U.S. Postage
Paid
Ducumation